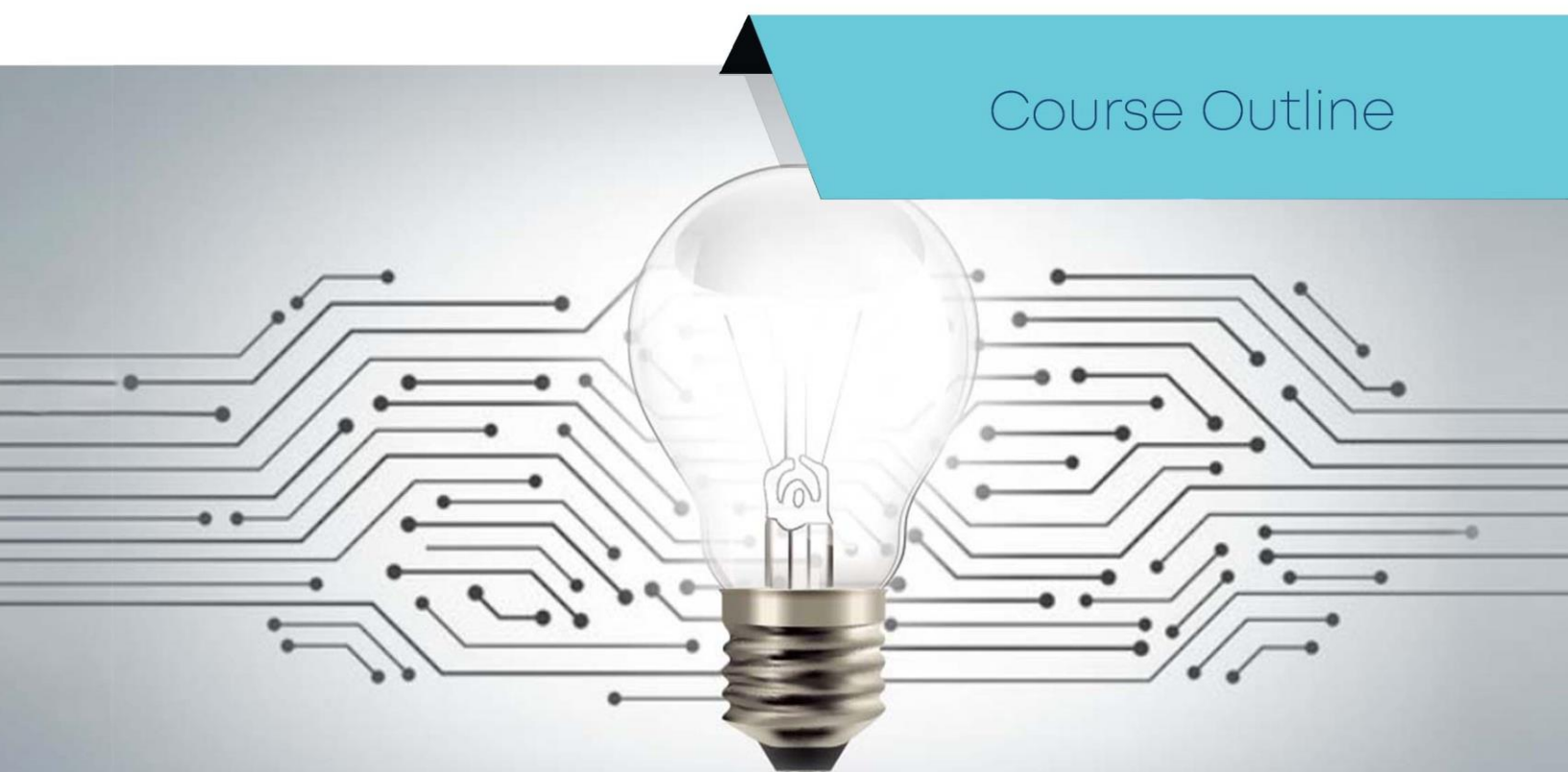


TOGAF® 9

Combined Level 1 and 2 Training Course

Course Outline





Course Overview:

This TOGAF® 9 Combined Level 1 and 2 Training Course will familiarize you with the principles, terminology, structure, and concepts of TOGAF 9—the globally acknowledged framework for enterprise architecture (EA). You'll learn the guidelines required for defining enterprise architecture and enabling alignment of business with IT, thereby increasing efficiency in IT operations. You will practice better planning and visibility, as well as more informed decisionmaking and design. TOGAF training will showcase your level of professionalism in architecture principles and processes to potential employers.

Program Features:

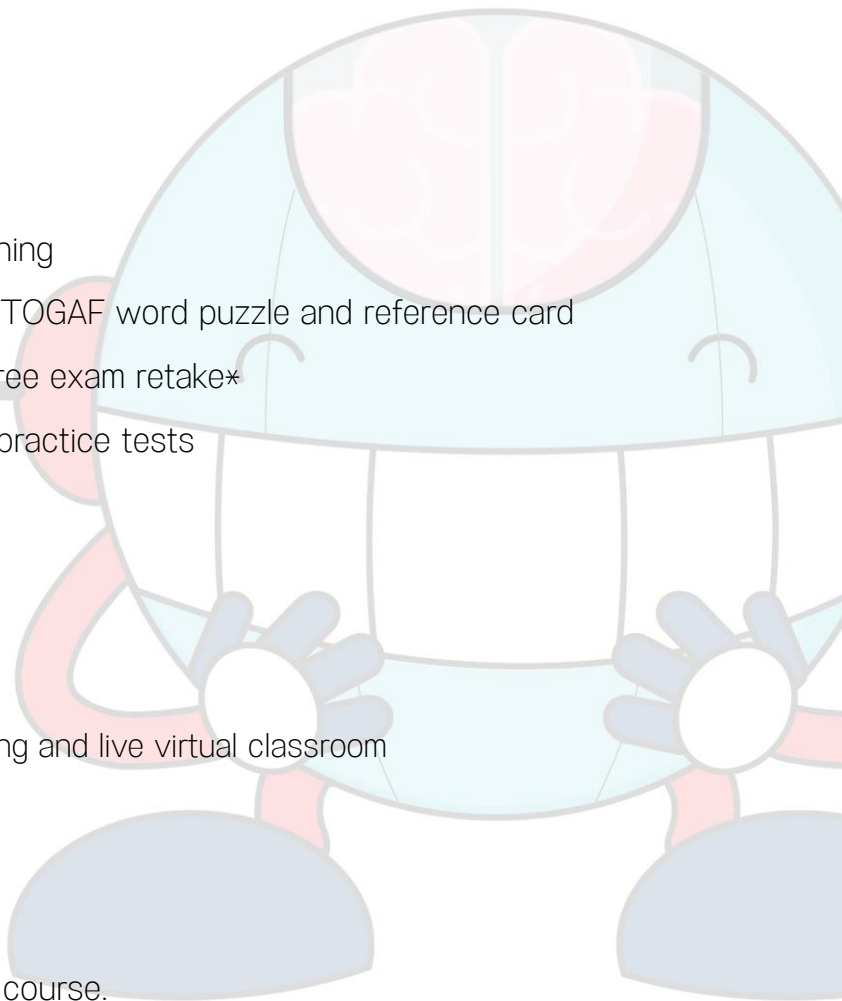
- 54 hours of applied learning
- 22 hours of Online self-paced learning
- 32 hours of instructor-led training TOGAF word puzzle and reference card
- Open Group accredited course - Free exam retake*
- 134 end-of-chapter quizzes and 2 practice tests
- Exam fee included

Course Delivery Method:

Online Bootcamp - Online self-paced learning and live virtual classroom

Prerequisites:

There are no prerequisites for taking this course.





Target Audience:

- Enterprise architecture professionals
- Business architects
- IT architects
- Individuals who require a deeper understanding of TOGAF 9 methodology

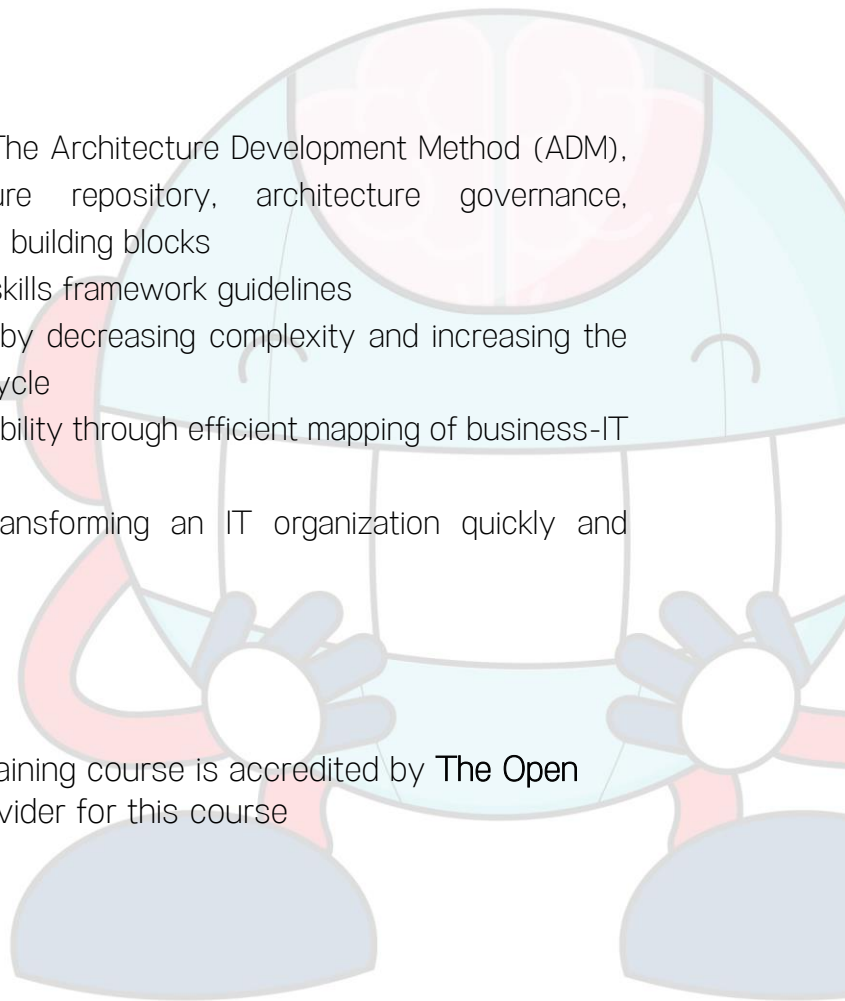
Key Learning Outcomes:

At the end of this training, you will learn:

- The principal concepts of TOGAF: The Architecture Development Method (ADM), enterprise continuum, architecture repository, architecture governance, architecture views, and architecture building blocks
- ADM architecture and architecture skills framework guidelines
- How to increase ROI on IT assets by decreasing complexity and increasing the speed in the business-IT decision cycle
- How to get better organizational visibility through efficient mapping of business-IT systems and technology domains
- The step-by-step approach to transforming an IT organization quickly and extensively

Certification Criteria:

Our TOGAF 9 Combined Level 1 and 2 Training course is accredited by **The Open Group**. We are the registered training provider for this course





Certification Details and Criteria:

TOGAF certification provides you with a clear path for professional development and credibility with your employers. The TOGAF Standard, a standard of The Open Group, is the open enterprise architecture standard used by the world's leading organizations to improve business efficiency.

- [What is the difference between the TOGAF Version 9.1 and Version 9.2?](#)

TOGAF Version 9.2 is an update of the previous version, providing you with improved guidance, corrected errors, improved document structure, and updated content. This version's primary enhancements include an updated business architecture and content metamodel, additional focus on the main digital trends and business transformations beyond IT, and updated references to the ISO/IEC/ IEEE 42010 standard.

- [How do you become TOGAF Certified?](#)

To become TOGAF certified, you must pass both the TOGAF 9 level 1 and level 2 exams. You may take the exam at your convenience from any of the nearest Open Group Pearson VUE test centers, using the included exam voucher.

- [Simplilearn Course Completion Criteria](#)

Attend one complete batch Complete one simulation test with a minimum score of 60 percent
Online Classroom:

- Complete 85 percent of the course
- Complete one simulation test with a minimum score of 60 percent



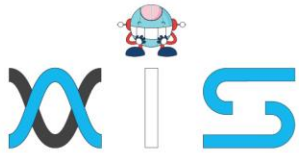
Course Curriculum:

- TOGAF 9 Foundation Training

- L1 00 - TOGAF-V92-M0-Course-Intro
- L1 01 - TOGAF V92 M1 Management Overview
- L1 02 - TOGAF V92 M2 TOGAF 9 Framework Components
- L1 03 - TOGAF V92 M3 Intro ADM
- L1 04 - TOGAF V92 M4 Enterprise Continuum
- L1 05 - TOGAF V92 M5 Architecture Repository
- L1 06 - TOGAF V92 M9 Architecture Governance
- L1 07 - TOGAF V92 M12 Architecture Views and Viewpoints
- L1 08 - TOGAF V92 M13 Building Blocks
- L1 09 - TOGAF V92 F6 ADM Phases Level 1
- L1 10 - TOGAF V92 F7 Guidelines and Techniques Level 1
- L1 11 - TOGAF V92 F11 ADM Deliverables Level 1
- L1 12 - TOGAF V92 F12 Reference Models
- L1 13 - TOGAF V92 F13 Certification

- TOGAF 9 Certified Training

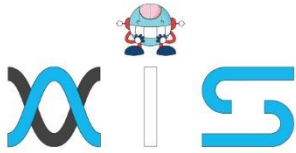
- L2 00 - TOGAF-V92-M0-Course-Intro
- L2 01 - TOGAF V92 M1 Management Overview
- L2 02 - TOGAF V92 M2 TOGAF 9 Framework Components
- L2 03 - TOGAF V92 M3 Intro ADM
- L2 04 - TOGAF V92 M4 Enterprise Continuum
- L2 05 - TOGAF V92 M5 Architecture Repository
- L2 06 - TOGAF V92 M9 Architecture Governance
- L2 07 - TOGAF V92 M6 Architecture Content Framework
- L2 08 - TOGAF V92 M7 Metamodel
- L2 09 - TOGAF V92 M12 Architecture Views and Viewpoints
- L2 10 - TOGAF V92 M13 Building Blocks
- L2 11 - TOGAF V92 M8 Preliminary Phase
- L2 12 - TOGAF V92 M10 Business Scenarios
- L2 13 - TOGAF V92 M11 Stakeholder Management
- L2 14 - TOGAF V92 M14 Implementation Support



L2 15 - TOGAF V92 M15 Phase A
L2 16 - TOGAF V92 M16 Phase B Business Architecture
L2 17 - TOGAF V92 M16A Phase B
L2 18 - TOGAF V92 M17 Phase C Overview
L2 19 - TOGAF V92 M18 Phase C Data Architecture
L2 20 - TOGAF V92 M18A Phase C Data Architecture
L2 21 - TOGAF V92 M19 I3RM
L2 22 - TOGAF V92 M20 Phase C Applications Architecture
L2 23 - TOGAF V92 M20A Phase C Applications Architecture
L2 24 - TOGAF V92 M21 Foundation Architecture
L2 25 - TOGAF V92 M22 Phase D Technology Architecture
L2 26 - TOGAF V92 M22A Phase D Technology Architecture
L2 27 - TOGAF V92 M23 Migration Planning
L2 28 - TOGAF V92 M24 Phase E Opportunities and Solutions
L2 29 - TOGAF V92 M25 Phase F Migration Planning
L2 30 - TOGAF V92 M26 Phase G Implementation Governance
L2 31 - TOGAF V92 M27 Phase H Architecture Change Management
L2 32 - TOGAF V92 M28 Architecture Requirements Management
L2 33 - TOGAF V92 M29 Architecture Partitioning
L2 34 - TOGAF V92 M30 Iteration and Levels
L2 35 - TOGAF V92 M31 Security
L2 36 - TOGAF V92 M33 Architecture Maturity Models
L2 37 - TOGAF V92 M34 Architecture Skills Framework

- Course Summary





AIS

With the rising demand in scalable technology, AIS provides tailored goal-setting based on your organization's needs and expectations. With products geared towards the growing needs of your organization's customers and employees, AIS has innovative and value-driven solutions.

Learning Partners



SAS Management, Inc.

SAS Management, Inc. has been a leader in the training, certification and consulting services industry in the Philippines. With offices in Makati, Ortigas and Cebu, Philippines, the company has been the top training and consulting company for over 9 years. In its years of existence, it has provided certificates to over 100,000 professionals including 10,000 participants in the 160+ courses that have been conducted just during the 2020-2021 pandemic alone. The most sought-after courses being offered are ITIL, Project Management Professional (PMP)®, COBIT 5, Six Sigma Yellow Belt, Six Sigma Green Belt, PRINCE2, and organizational skills, among others.



Simplilearn

Simplilearn, based in California and India, is the world's #1 online bootcamp and one of the world's the leading certification and training providers. Simplilearn trained over 2,000,000 professionals with 2,000+ trainers and provides over 400 different courses.

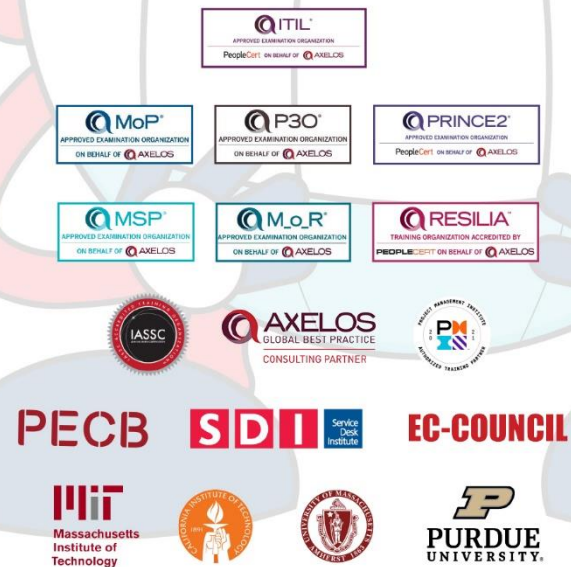
Technology Partner

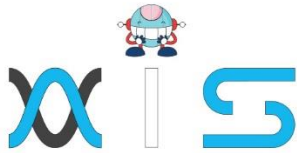


Freshworks

With over 40,000 customers, Freshworks is a business solutions software provider with products ranging from IT helpdesk and service desk, customer relationship management, live chat, marketing automation, phone system, and HR.

Partners & Affiliates





The program presented, as well as a wide range of programs are products of the partnership of AIS, SAS Management, Inc., and Simplilearn. With a common goal of providing the best practice of facilitating learning with an array of choices available in the online platform in this time of digitization.

Office Addresses

NXT AIS Inc.

Juan Antonio III Building
315 Maysilo Circle, Mandaluyong, Philippines

SAS Management, Inc.

- **Head Office**

Unit 1602 Cityland 10 Tower
2 6815 HV dela Costa cor Ayala Avenue
Makati City, Philippines

- **Branch Office**

Unit 204 Villa Building
Jupiter St. corner Makati Avenue
Makati City, Philippines

- **Branch Office**

Room 201 2nd floor OLS Building
443 Gorordo Avenue., Brgy. Kamputhaw
Cebu City, Philippines

- **Branch Office**

Malaysia - SAS Management
Sdn Bhd 6f-16, IOI Business Park,
Persiaran Puchong Jaya
47170, Selangor

Simplilearn

- **Simplilearn Americas, Inc
Pvt Ltd.**

201 Spear Street, Suite 1100,
San Francisco, CA 94105 United States

- **Simplilearn Solutions
Pte Ltd.**

NALANDA 53/1 C, Manoj Arcade, 24th Main Rd,
Sector 2, HSR Layout, Bengaluru
560102, Karnataka, India.

- **Simplilearn Singapore**

#14-302, The Plaza, 7500A Beach Rd,
Singapore 199591