



Tableau

simpli|learn

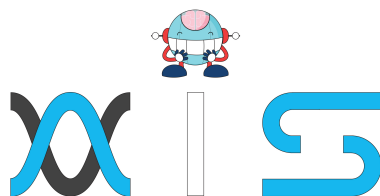




Table of Contents:

- > Program Overview
- > Program Features
- > Delivery Mode
- > Prerequisites
- > Target Audience
- > Key Learning Outcomes
- > Certification Details and Criteria
- > Course Curriculum
- > Course End Projects
- > Customer Reviews
- > About Us

Program Overview:

The Tableau Certification course teaches you how to build visualizations, organize data, and design charts and dashboards to empower more meaningful business decisions. You'll be exposed to the concepts of Data Visualization, different combo charts, and stories, working with filters, parameters, and sets, and building interactive dashboards.

Program Features:

- > 4.7 hours of Online self-paced learning
- > 32 hours of instructor-led training
- > 4 industry-based course-end projects

Delivery Mode:

Blended - Online self-paced learning and live virtual classroom

Prerequisites:

There are no prerequisites for taking this training.



Target Audience:

- > Analytics professionals
- > IT developers and testers
- > Data analysts
- > Data scientists
- > BI and reporting professionals
- > Project managers

Key Learning Outcomes:

By the end of this Tableau training, you will be able to accomplish the following:

- > Become an expert on visualization techniques such as heat map, treemap, waterfall, Pareto
- > Understand metadata and its usage
- > Work with Filter, Parameters, and Sets
- > Master special field types and Tableau-generated fields and the process of creating and using parameters
- > Learn how to build charts, interactive dashboards, story interfaces, and how to share your work
- > Master the concepts of data blending, create data extracts and organize and format data
- > Master arithmetic, logical, table, and LOD calculations

Certification Details and Criteria:

- > Complete at least 85 percent of the online self-paced course or attendance of one live virtual classroom
- > Earn a score of at least 75 percent in course-end assessment
- > Successful evaluation of at least one project



Course Curriculum:

Lesson 01 - Getting Started with Tableau

- > Getting Started with Excel
- > Download and Install Tableau Public
- > Load Data from Excel
- > User Interface of Tableau
- > Key Takeaways

Lesson 02 - Core Tableau in Topics

- > Core Topics in Tableau
- > Dimensions vs. Measures
- > Discrete vs Continuous
- > Application of Discrete and Continuous Fields
- > Aggregation in Tableau
- > Key Takeaways

Lesson 03 - Creating Charts in Tableau

- > Creating Charts in Tableau
- > Bar Chart
- > Stacked Bar Chart
- > Line Chart
- > Scatter Plot
- > Dual-Axis Charts
- > Combined-Axis Charts
- > Funnel Chart
- > Cross Tabs
- > Highlight Tables
- > Maps
- > Measure Names and Measure Values
- > Key Takeaways
- > Hands-on project: Customer Analysis



Lesson 04 - Working with Metadata

- > Working with Metadata
- > Data Types
- > Rename, Hide, Unhide and Sort Columns
- > Default Properties of Fields
- > Key Takeaways

Lesson 05 - Filters in Tableau

- > Filters in Tableau
- > Dimension Filter
- > Date Filter
- > Measure Filter
- > Visual filter
- > Interactive Filter
- > Data Source Filter
- > Context Filter
- > Key Takeaways
- > Hands-on project Product Analysis

Lesson 06 - Applying Analytics to the worksheet

- > Applying Analytics to the Worksheet
- > Sets
- > Parameters
- > Group
- > Calculated Fields
- > Date Functions
- > Text Functions
- > Bins and Histogram
- > Sort
- > Reference and Trend Lines
- > Table Calculations
- > Pareto Chart
- > Waterfall Chart
- > Key Takeaways



Lesson 07 - Dashboard in Tableau

- > Dashboards in Tableau
- > Dashboard
- > Working with Layout
- > Objects in Dashboard
- > Making Dashboards Interactive
- > Actions in Dashboard
- > Best Practices for Dashboard Creation
- > Dashboard for Mobile
- > Story
- > Case Study
- > Key Takeaways
- > Hands-on project Sales Dashboard

Lesson 08 - Modifications to Data Connections

- > Modifications to Data Connections
- > Edit Data Source
- > Unions
- > Joins
- > Data blending
- > Key Takeaways

Lesson 09 - Introduction to Level of Details in Tableau (LODS)

- > Level of Details
- > Introduction to Level of Detail (LODs)
- > Fixed LOD
- > Include LOD
- > Exclude LOD
- > Publish to Tableau Public
- > Key Takeaways



Course End **Projects:**

The course includes five real-world, industry-based projects. Successful evaluation of one of the following projects is a part of the certification eligibility criteria:

Project 1: Comparative Study of Countries

Build a dashboard to do a comparative study on various parameters of different countries, using the sample insurance and world development indicators dataset.

Domain: Insurance and Finance

Project 2: Sales Performance Analysis

Build a dashboard to present monthly sales performance by product segment and product category for the purposes of identifying the areas that have met or exceeded their sales targets.

Domain: E-commerce

Project 3: Customer Analysis

Build a dashboard that presents customer statistics, ranking them by profit ratio and sales. Also, include statistics regarding profit performance by region.

Domain: Retail

Project 4: Product Analysis

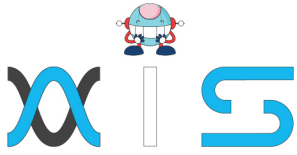
Build a dashboard that presents sales by product category over time, with the ability to drill down to the product and regional level to check if the products are correctly priced.

Domain: Retail

Project 5: Sales Dashboard

Build a dashboard that presents metrics about products (e.g. sales, profits, profit ratio) and the trends of statistics over a given period of time, filtering down to a number of geographic regions.

Domain: Retail



AIS

With the rising demand in scalable technology, AIS provides tailored goal-setting based on your organization's needs and expectations. With products geared towards the growing needs of your organization's customers and employees, AIS has innovative and value-driven solutions.

Learning Partners



SAS Management, Inc.

Premiere training and consulting services company, SAS Management, Inc. has been in the industry for a decade. SAS Management, inc. focuses on creating value in every learning and consulting experience by providing the best possible output – whether in a virtual classroom setup, e-learning, or face-to-face. SAS Management, Inc. is the leading training and certification provider for ITIL, Project Management Professional, ISO certifications, PRINCE2, SDI Service Desk Analyst and Manager, Agile, and a host of many programs and courses.



Simplilearn

Tagged as the “World's #1 Online Bootcamp”, Simplilearn provides online education and in-house training for professional certification courses. Founded in 2010, Simplilearn offers more than 100 programs, helping professionals reach their learning potentials needed to work in the digital economy.

Technology Partner



Freshworks

With over 40,000 customers, Freshworks is a business solutions software provider with products ranging from IT helpdesk and service desk, customer relationship management, live chat, marketing automation, phone system, and HR.

Partners & Affiliates

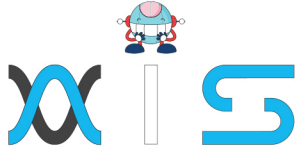


PECB

SDI
Service Desk Institute

EC-COUNCIL





The program presented, as well as a wide range of programs are products of the partnership of AIS, SAS Management, Inc., and Simplilearn. With a common goal of providing the best practice of facilitating learning with an array of choices available in the online platform in this time of digitization.

Office Addresses

AI Services

Juan Antonio III Building
315 Maysilo Circle, Mandaluyong, Philippines

SAS Management, Inc.

- **Head Office**

Unit 1602 Cityland 10 Tower
2 6815 HV dela Costa cor Ayala Avenue
Makati City, Philippines

- **Branch Office**

Unit 204 Villa Building
Jupiter St. corner Makati Avenue
Makati City, Philippines

- **Branch Office**

Room 201 2nd floor OLS Building
443 Gorordo Avenue., Brgy. Kamputhaw
Cebu City, Philippines

- **Branch Office**

Malaysia - SAS Management
Sdn Bhd 6f-16, IOI Business Park,
Persiaran Puchong Jaya
47170, Selangor

Simplilearn

- **Simplilearn Americas, Inc
Pvt Ltd.**

201 Spear Street, Suite 1100,
San Francisco, CA 94105 United States

- **Simplilearn Solutions
Pte Ltd.**

NALANDA 53/1 C, Manoj Arcade, 24th Main Rd,
Sector 2, HSR Layout, Bengaluru
560102, Karnataka, India.

- **Simplilearn Singapore**

#14-302, The Plaza, 7500A Beach Rd,
Singapore 199591