



SQL Certification Training Course

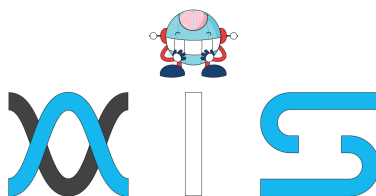




Table of **Contents:**

- > Program Overview
- > Program Features
- > Delivery Mode
- > Prerequisites
- > Target Audience
- > Key Learning Outcomes
- > Certification Details and Criteria
- > Course Curriculum
- > About Us

Program **Overview:**

SQL Certification training course provides all of the basic information you need to successfully start working with SQL databases and apply the SQL database to your own applications. Upon completion of this comprehensive course, you will know how to correctly structure your database, author efficient SQL statements and clauses, and manage your SQL database for scalable growth.

Program **Features:**

- > 7+ hours of online self-learning content
- > In-depth coverage of SQL fundamentals
- > Covers all of the important query tools and SQL commands
- > Industry-recognized course completion certificate
- > Lifetime access to self-paced learning content

Delivery **Mode:**

Online self-learning



Prerequisites:

There are no prerequisites for this database training course. This course can be taken up by anyone who wants to learn SQL.

Target Audience:

This online SQL certification course is ideal for freshers, programmers, software developers, and testing professionals who want to learn SQL. It's also ideal for marketing professionals and salespeople who want to better understand their company's data.

Key Learning Outcomes:

By the end of this SQL Certification training course, you will be able to:

- > Understand the basic fundamentals of SQL database
- > Learn how to correctly structure your database
- > Structure the author efficient SQL statements and clauses
- > Manage your SQL database for scalable growth

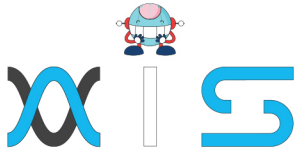
Certification Details and Criteria:

- > Complete 85% of the online self-learning course



Course Curriculum:

- > Lesson 01 - Introduction
- > Lesson 02 - Installation and getting started
- > Lesson 03 - Case Study Demo
- > Lesson 04 - Fundamental SQL statements
- > Lesson 05 - Restore and Back-up
- > Lesson 06 - Selection commands Filtering
- > Lesson 07 - Selection commands Ordering
- > Lesson 08 - Alias
- > Lesson 09 - Aggregate Commands
- > Lesson 10 - Group by Commands
- > Lesson 11 - Conditional Statement
- > Lesson 12 - JOINS
- > Lesson 13 - Subqueries
- > Lesson 14 - Views and Indexes
- > Lesson 15 - String Functions
- > Lesson 16 - Mathematical Functions
- > Lesson 17 - Date-Time Functions
- > Lesson 18 - PATTERN (STRING) MATCHING
- > Lesson 19 -Data Type conversion functions
- > Lesson 20 - User Access Control Functions
- > Lesson 21 - Bonus Section Nail that Interview
- > Lesson 22 - Performance tuning tips
- > Lesson 23 - Bonus Section Database Basics



AIS

With the rising demand in scalable technology, AIS provides tailored goal-setting based on your organization's needs and expectations. With products geared towards the growing needs of your organization's customers and employees, AIS has innovative and value-driven solutions.

Learning Partners



SAS Management, Inc.

Premiere training and consulting services company, SAS Management, Inc. has been in the industry for a decade. SAS Management, inc. focuses on creating value in every learning and consulting experience by providing the best possible output – whether in a virtual classroom setup, e-learning, or face-to-face. SAS Management, Inc. is the leading training and certification provider for ITIL, Project Management Professional, ISO certifications, PRINCE2, SDI Service Desk Analyst and Manager, Agile, and a host of many programs and courses.



Simplilearn

Tagged as the “World's #1 Online Bootcamp”, Simplilearn provides online education and in-house training for professional certification courses. Founded in 2010, Simplilearn offers more than 100 programs, helping professionals reach their learning potentials needed to work in the digital economy.

Technology Partner



Freshworks

With over 40,000 customers, Freshworks is a business solutions software provider with products ranging from IT helpdesk and service desk, customer relationship management, live chat, marketing automation, phone system, and HR.

Partners & Affiliates

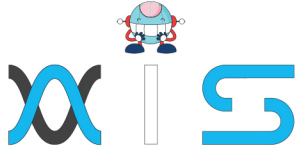


PECB

SDI Service Desk Institute

EC-COUNCIL





The program presented, as well as a wide range of programs are products of the partnership of AIS, SAS Management, Inc., and Simplilearn. With a common goal of providing the best practice of facilitating learning with an array of choices available in the online platform in this time of digitization.

Office Addresses

AI Services

Juan Antonio III Building
315 Maysilo Circle, Mandaluyong, Philippines

SAS Management, Inc.

- **Head Office**

Unit 1602 Cityland 10 Tower
2 6815 HV dela Costa cor Ayala Avenue
Makati City, Philippines

- **Branch Office**

Unit 204 Villa Building
Jupiter St. corner Makati Avenue
Makati City, Philippines

- **Branch Office**

Room 201 2nd floor OLS Building
443 Gorordo Avenue., Brgy. Kamputhaw
Cebu City, Philippines

- **Branch Office**

Malaysia - SAS Management
Sdn Bhd 6f-16, IOI Business Park,
Persiaran Puchong Jaya
47170, Selangor

Simplilearn

- **Simplilearn Americas, Inc
Pvt Ltd.**

201 Spear Street, Suite 1100,
San Francisco, CA 94105 United States

- **Simplilearn Solutions
Pte Ltd.**

NALANDA 53/1 C, Manoj Arcade, 24th Main Rd,
Sector 2, HSR Layout, Bengaluru
560102, Karnataka, India.

- **Simplilearn Singapore**

#14-302, The Plaza, 7500A Beach Rd,
Singapore 199591