

# PRINCE2® FOUNDATION AND PRACTITIONER

Course Outline





## Course Overview:

Learn project management with the practice-driven approach to project management to build your career, with this PRINCE2® course. Learn how to tailor projects based on environment and project risks, and develop a product-based planning approach for projects.

## Course Highlights

- 61 hours of applied learning
- 32 hours of instructor-led training
- 2 simulation tests, 7 scenarios, 26 process templates, and 1 process model
- 156 lesson-end quizzes, 2 projects, and 22 downloadable slides
- 98.2 percent success rate
- Get 31 PDUs (self-paced) or 35 PDUs (applied learning) from the program
- 2 AXELOS sample papers with an exam preparation guide

## Course Delivery Method:

This PRINCE 2 course is an online bootcamp course — a combination of online self-paced and live virtual classroom instruction

## Prerequisites:

There are no prerequisites for this PRINCE2 Foundation and Practitioner course. However, the learners should complete and pass the PRINCE2 Foundation Exam to enroll for the PRINCE2 Practitioner examination



## Skills Covered:

- PRINCE2 methodology
- PRINCE2 principles
- Tailoring and adopting PRINCE2
- PRINCE2 themes
- PRINCE2 processes

## Who Will Benefit:

This course is ideal for project managers, assistant/associate project managers, team leads, team managers, project executives, project engineers, and software developers.

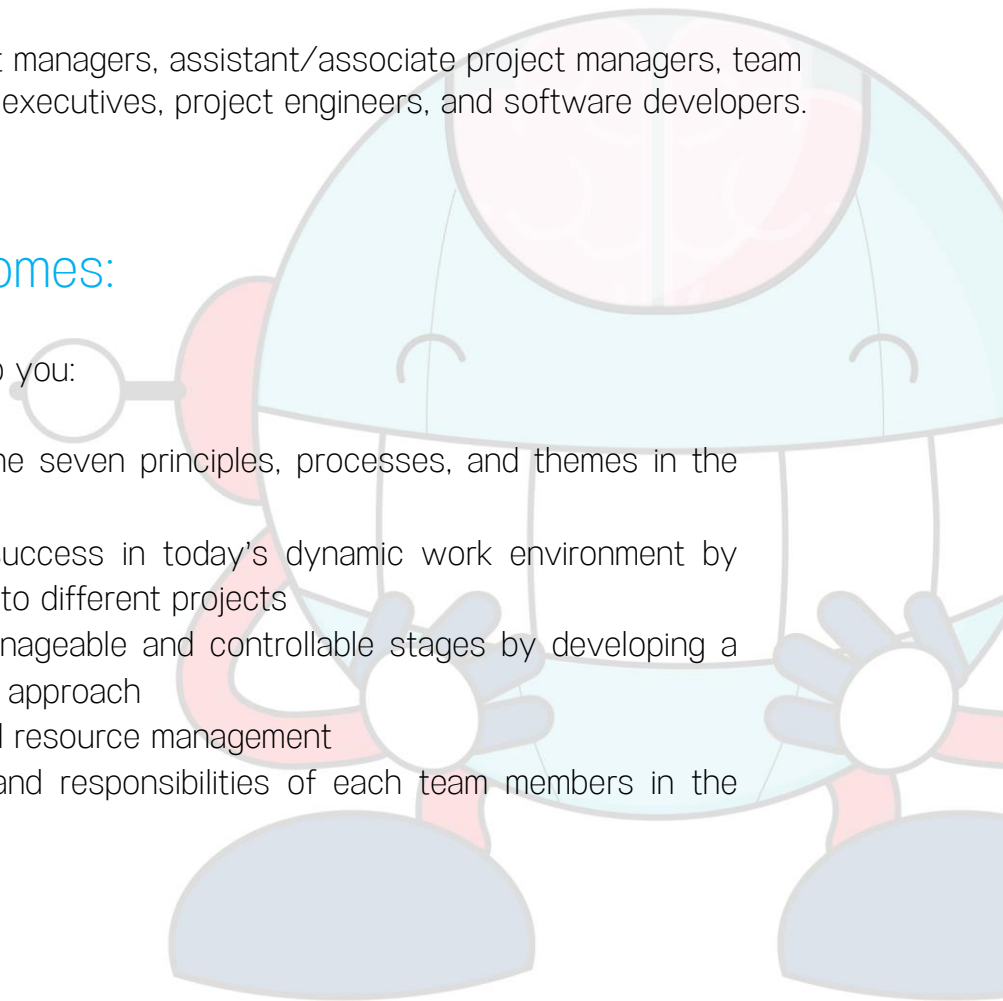
## Key Learning Outcomes:

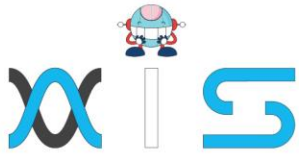
This PRINCE 2 course will help you:

- Learn and implement the seven principles, processes, and themes in the PRINCE2 guidelines
- Ensure flexibility and success in today's dynamic work environment by tailoring your approach to different projects
- Divide projects into manageable and controllable stages by developing a product-based planning approach
- Manage project risk and resource management
- Understand the roles and responsibilities of each team members in the project

## Accreditations:

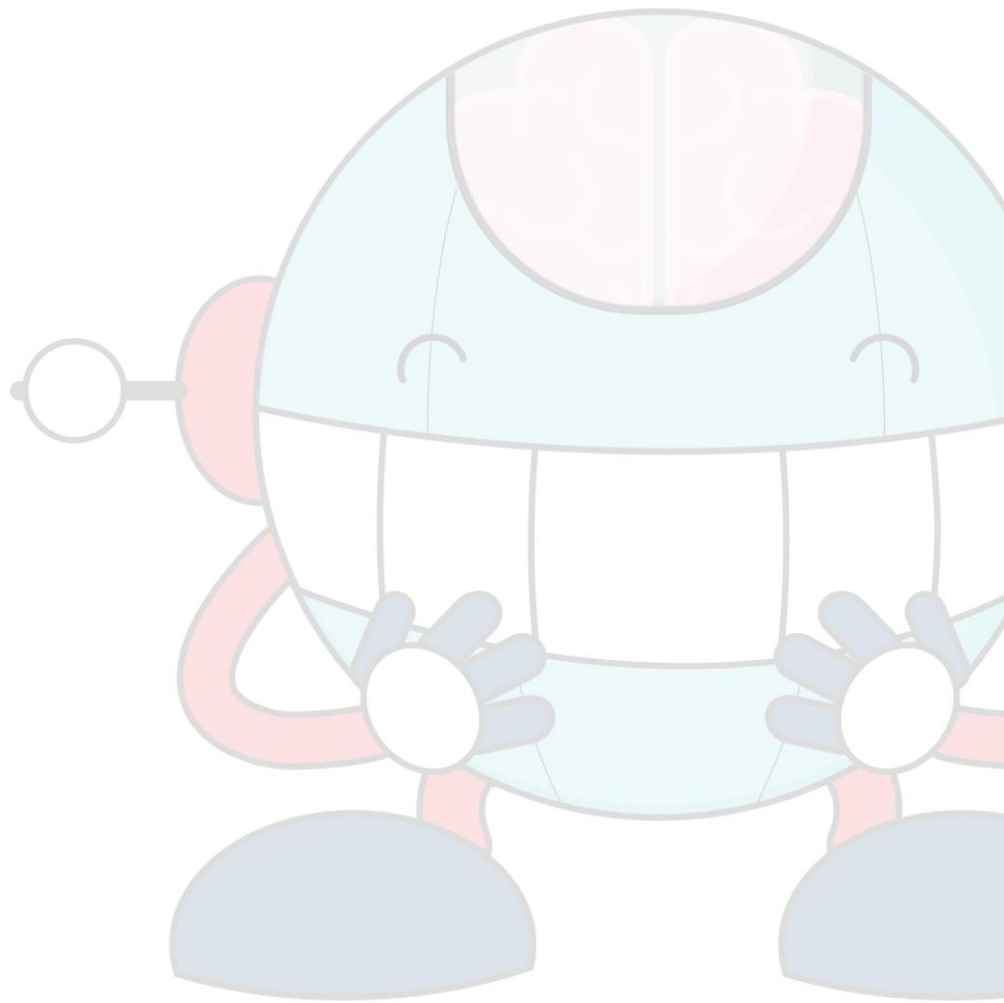
This PRINCE 2 course is accredited by AXELOS.

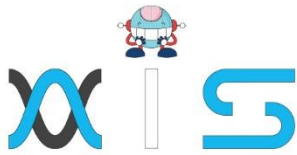




## Certification Criteria:

To unlock this certificate, complete one live batch or attend 85 percent of the online self-paced course and score a minimum of 60 percent on the course-end assessment.





## AIS

With the rising demand in scalable technology, AIS provides tailored goal-setting based on your organization's needs and expectations. With products geared towards the growing needs of your organization's customers and employees, AIS has innovative and value-driven solutions.

### Learning Partners



#### SAS Management, Inc.

SAS Management, Inc. has been a leader in the training, certification and consulting services industry in the Philippines. With offices in Makati, Ortigas and Cebu, Philippines, the company has been the top training and consulting company for over 9 years. In its years of existence, it has provided certificates to over 100,000 professionals including 10,000 participants in the 160+ courses that have been conducted just during the 2020-2021 pandemic alone. The most sought-after courses being offered are ITIL, Project Management Professional (PMP)®, COBIT 5, Six Sigma Yellow Belt, Six Sigma Green Belt, PRINCE2, and organizational skills, among others.



#### Simplilearn

Simplilearn, based in California and India, is the world's #1 online bootcamp and one of the world's the leading certification and training providers. Simplilearn trained over 2,000,000 professionals with 2,000+ trainers and provides over 400 different courses.

### Technology Partner



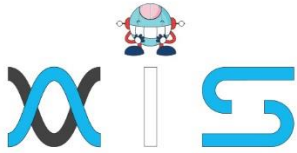
#### Freshworks

With over 40,000 customers, Freshworks is a business solutions software provider with products ranging from IT helpdesk and service desk, customer relationship management, live chat, marketing automation, phone system, and HR.

### Partners & Affiliates







*The program presented, as well as a wide range of programs are products of the partnership of AIS, SAS Management, Inc., and Simplilearn. With a common goal of providing the best practice of facilitating learning with an array of choices available in the online platform in this time of digitization.*

## Office Addresses

### NXT AIS Inc.

Juan Antonio III Building  
315 Maysilo Circle, Mandaluyong, Philippines

### SAS Management, Inc.

- **Head Office**

Unit 1602 Cityland 10 Tower  
2 6815 HV dela Costa cor Ayala Avenue  
Makati City, Philippines

- **Branch Office**

Unit 204 Villa Building  
Jupiter St. corner Makati Avenue  
Makati City, Philippines

- **Branch Office**

Room 201 2nd floor OLS Building  
443 Gorordo Avenue., Brgy. Kamputhaw  
Cebu City, Philippines

- **Branch Office**

Malaysia - SAS Management  
Sdn Bhd 6f-16, IOI Business Park,  
Persiaran Puchong Jaya  
47170, Selangor

### Simplilearn

- **Simplilearn Americas, Inc  
Pvt Ltd.**

201 Spear Street, Suite 1100,  
San Francisco, CA 94105 United States

- **Simplilearn Solutions  
Pte Ltd.**

NALANDA 53/1 C, Manoj Arcade, 24th Main Rd,  
Sector 2, HSR Layout, Bengaluru  
560102, Karnataka, India.

- **Simplilearn Singapore**

#14-302, The Plaza, 7500A Beach Rd,  
Singapore 199591