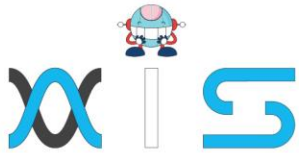


PRINCE2® AGILE FOUNDATION & PRACTITIONER CERTIFICATION

Course Outline





Course Overview:

Deliver projects that meet rapidly shifting consumer needs by combining agile concepts with PRINCE2 with help of this PRINCE2® Agile Foundation & Practitioner course. Learn to focus on management and delivery in an agile environment by establishing a tailored governance framework.

Course Highlights:

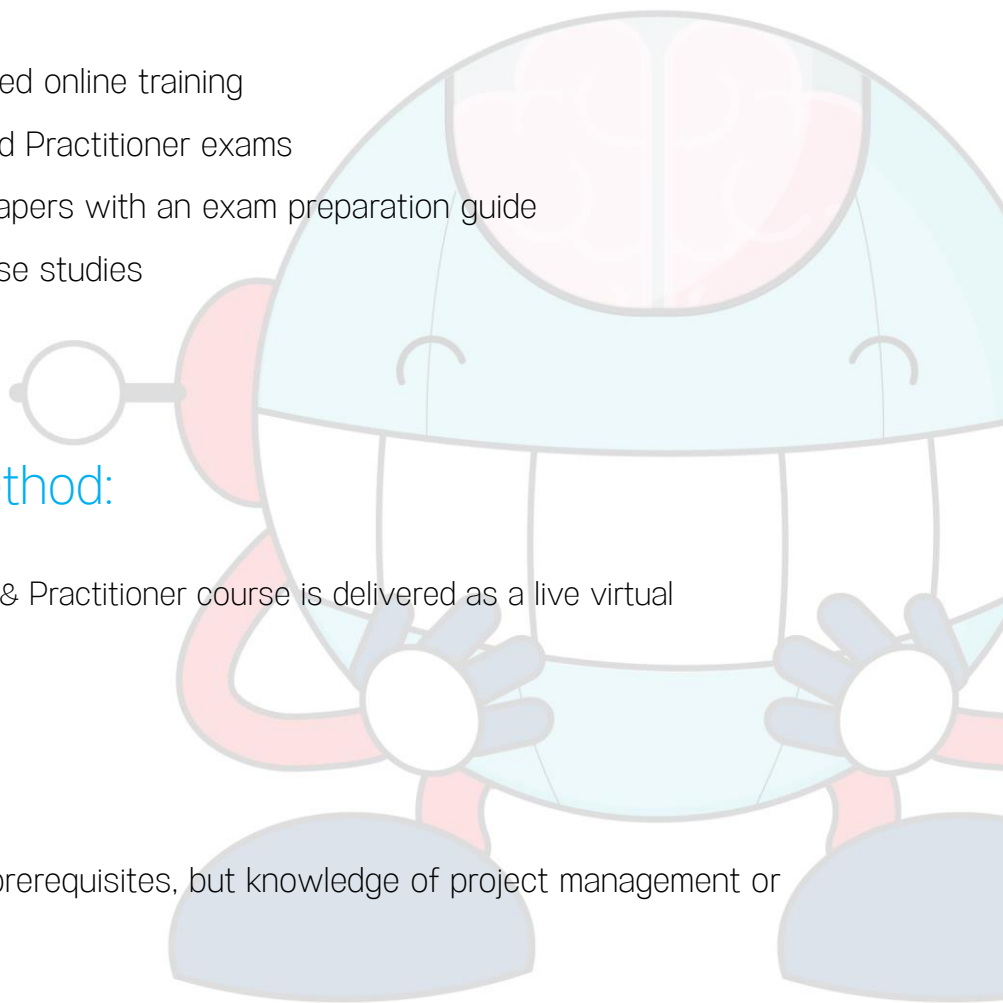
- 40 hours of instructor-led online training
- PRINCE2 Foundation and Practitioner exams
- Two AXELOS sample papers with an exam preparation guide
- Two industry-based case studies
- Downloadable eBooks

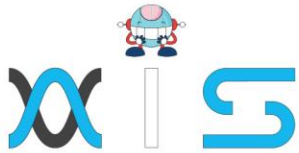
Course Delivery Method:

This PRINCE2 Agile Foundation & Practitioner course is delivered as a live virtual classroom.

Prerequisites:

This PRINCE2 course has no prerequisites, but knowledge of project management or agile delivery is a plus.





Skills Covered:

- Project management
- Stakeholder management
- Agile framework
- Kanban method
- Scrum framework
- PRINCE2 methodology
- Principles of PRINCE2
- PRINCE2 processes

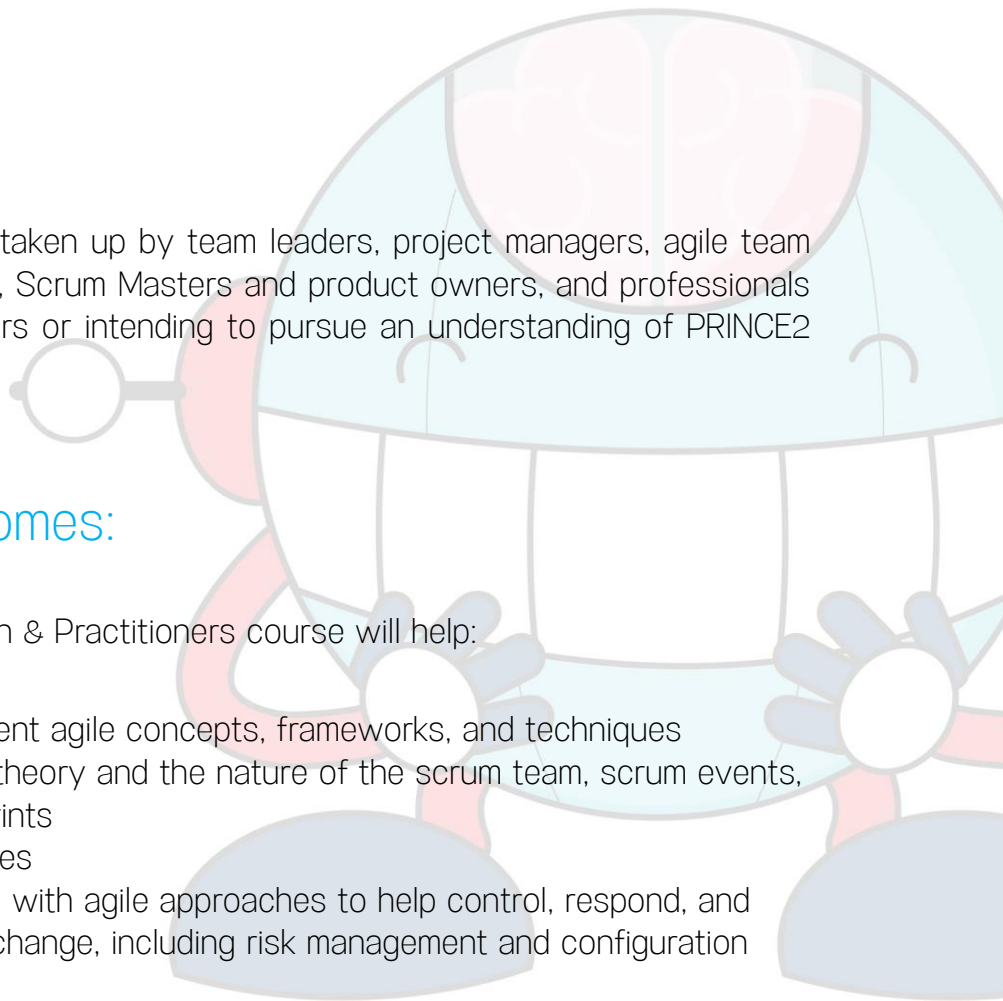
Who Will Benefit:

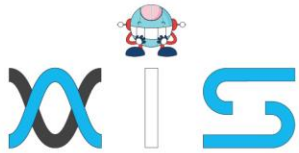
This PRINCE2 course can be taken up by team leaders, project managers, agile team managers such as developers, Scrum Masters and product owners, and professionals aspiring to be project managers or intending to pursue an understanding of PRINCE2 Agile.

Key Learning Outcomes:

This PRINCE2 Agile Foundation & Practitioners course will help:

- Understand and implement agile concepts, frameworks, and techniques
- Understand the Scrum theory and the nature of the scrum team, scrum events, scrum artifacts, and sprints
- Manage frequent releases
- Learn to blend PRINCE2 with agile approaches to help control, respond, and minimize the impact of change, including risk management and configuration management



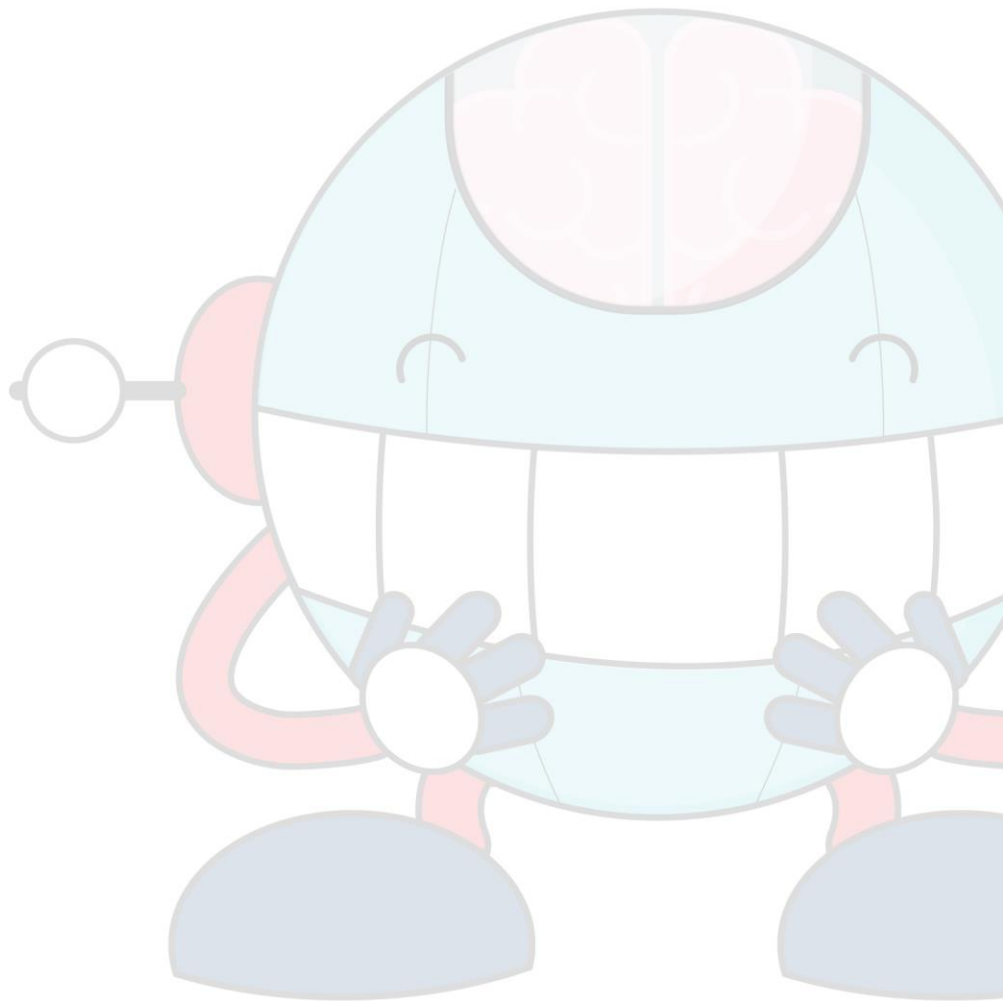


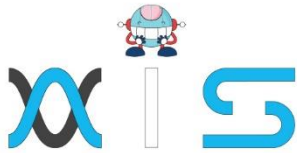
Accreditations:

This PRINCE2 Agile Foundation & Practitioner course is accredited by AXELOS

Certification Criteria:

To unlock this certificate, attend one LVC batch and pass one course-end assessment project.





AIS

With the rising demand in scalable technology, AIS provides tailored goal-setting based on your organization's needs and expectations. With products geared towards the growing needs of your organization's customers and employees, AIS has innovative and value-driven solutions.

Learning Partners



SAS Management, Inc.

SAS Management, Inc. has been a leader in the training, certification and consulting services industry in the Philippines. With offices in Makati, Ortigas and Cebu, Philippines, the company has been the top training and consulting company for over 9 years. In its years of existence, it has provided certificates to over 100,000 professionals including 10,000 participants in the 160+ courses that have been conducted just during the 2020-2021 pandemic alone. The most sought-after courses being offered are ITIL, Project Management Professional (PMP)®, COBIT 5, Six Sigma Yellow Belt, Six Sigma Green Belt, PRINCE2, and organizational skills, among others.



Simplilearn

Simplilearn, based in California and India, is the world's #1 online bootcamp and one of the world's the leading certification and training providers. Simplilearn trained over 2,000,000 professionals with 2,000+ trainers and provides over 400 different courses.

Technology Partner



Freshworks

With over 40,000 customers, Freshworks is a business solutions software provider with products ranging from IT helpdesk and service desk, customer relationship management, live chat, marketing automation, phone system, and HR.

Partners & Affiliates

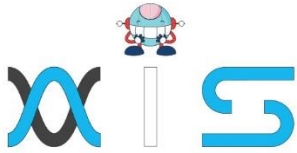


PECB

SDI Service Desk Institute

EC-COUNCIL





The program presented, as well as a wide range of programs are products of the partnership of AIS, SAS Management, Inc., and Simplilearn. With a common goal of providing the best practice of facilitating learning with an array of choices available in the online platform in this time of digitization.

Office Addresses

NXT AIS Inc.

Juan Antonio III Building
315 Maysilo Circle, Mandaluyong, Philippines

SAS Management, Inc.

- **Head Office**

Unit 1602 Cityland 10 Tower
2 6815 HV dela Costa cor Ayala Avenue
Makati City, Philippines

- **Branch Office**

Unit 204 Villa Building
Jupiter St. corner Makati Avenue
Makati City, Philippines

- **Branch Office**

Room 201 2nd floor OLS Building
443 Gorordo Avenue., Brgy. Kamputhaw
Cebu City, Philippines

- **Branch Office**

Malaysia - SAS Management
Sdn Bhd 6f-16, IOI Business Park,
Persiaran Puchong Jaya
47170, Selangor

Simplilearn

- **Simplilearn Americas, Inc Pte Ltd.**

201 Spear Street, Suite 1100,
San Francisco, CA 94105 United States

- **Simplilearn Solutions Pte Ltd.**

NALANDA 53/1 C, Manoj Arcade, 24th Main Rd,
Sector 2, HSR Layout, Bengaluru
560102, Karnataka, India.

- **Simplilearn Singapore**

#14-302, The Plaza, 7500A Beach Rd,
Singapore 199591