

PMI-RMP®

Course Outline





Course Overview:

Learn risk management with our PMI-RMP® certification training. Conduct risk analysis, identification, and planning for projects with help of this course. With this Risk Management Professional (RMP) you will gain knowledge and skills to assess, identify, and control various risks.

Course Highlights

- 13 hours of high-quality elearning content
- 5 RMP simulation exams
- Course completion certificate
- 68 chapter-end quizzes
- Downloadable ebook
- 32 PDUs

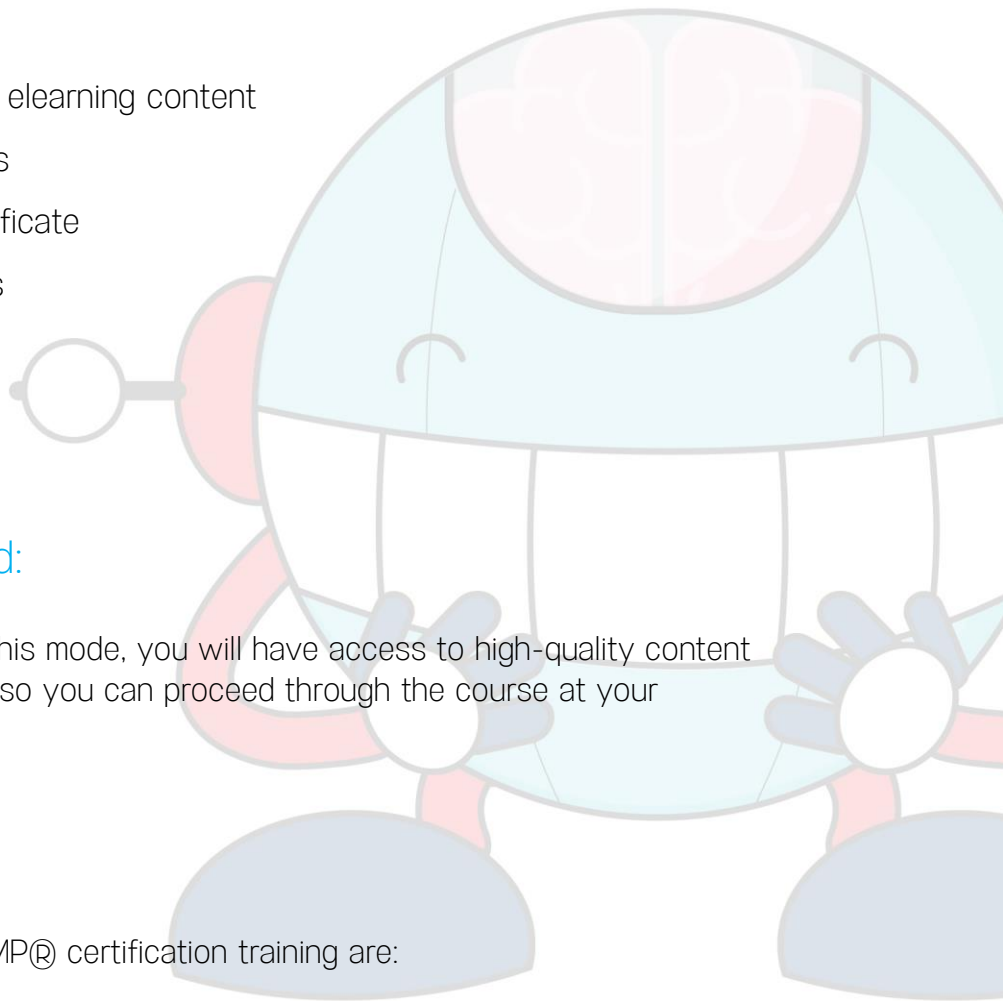
Course Delivery Method:

Online Self Learning Mode: In this mode, you will have access to high-quality content curated by industry experts so you can proceed through the course at your convenience.

Prerequisites:

The prerequisite for the PMI-RMP® certification training are:

- 40 years of project risk management education if you hold a high school diploma or equivalent and a minimum of 4,500 hours of professional project risk experiment





within the last five years

OR

- 30 hours of project management education and at least 3000 hours of professional project risk management experience within the last five years if you hold a Bachelor's degree or above

Skills Covered:

- Risk management
- Quantitative and qualitative risk assessment
- Risk analysis
- Project planning
- Risk mitigation

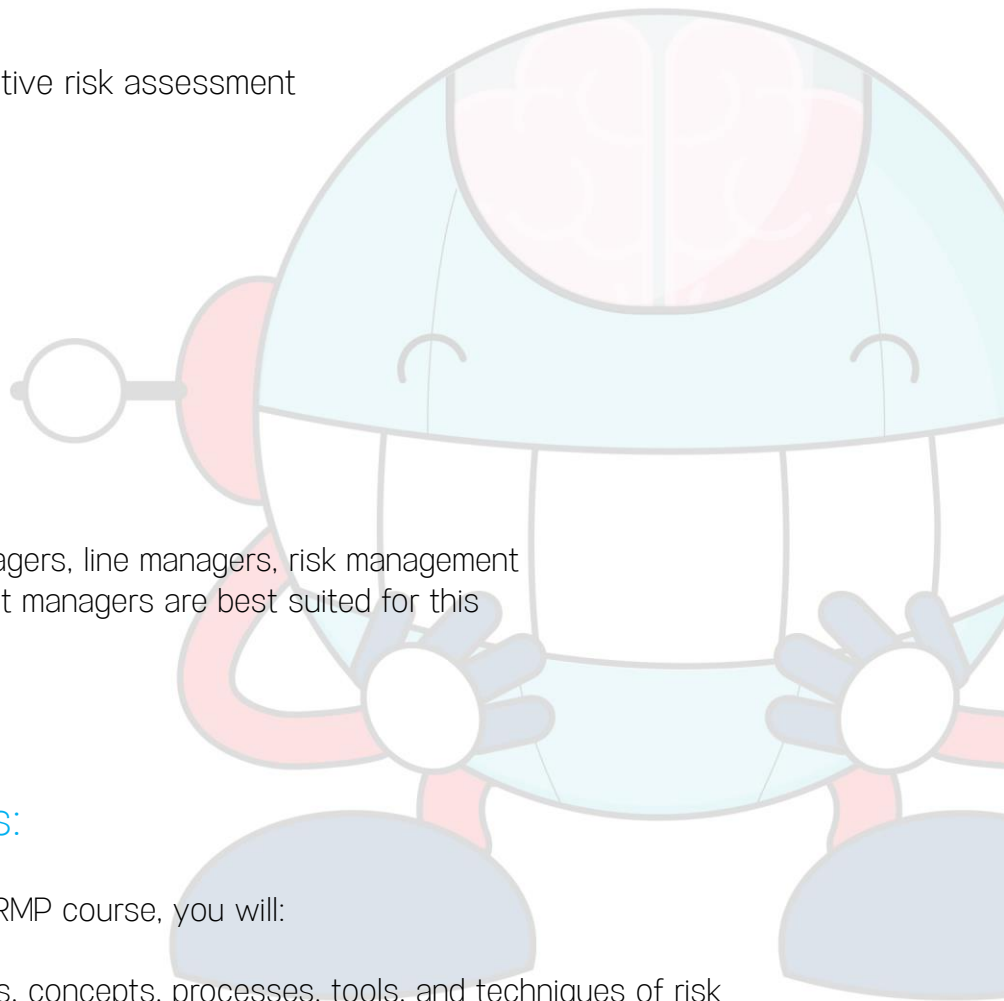
Who Will Benefit:

Professionals like program managers, line managers, risk management consultants, and aspiring project managers are best suited for this course.

Key Learning Outcomes:

On the completion of this PMI-RMP course, you will:

- Understand the principles, concepts, processes, tools, and techniques of risk management
- Be able to identify, analyze, and monitor risks in a project





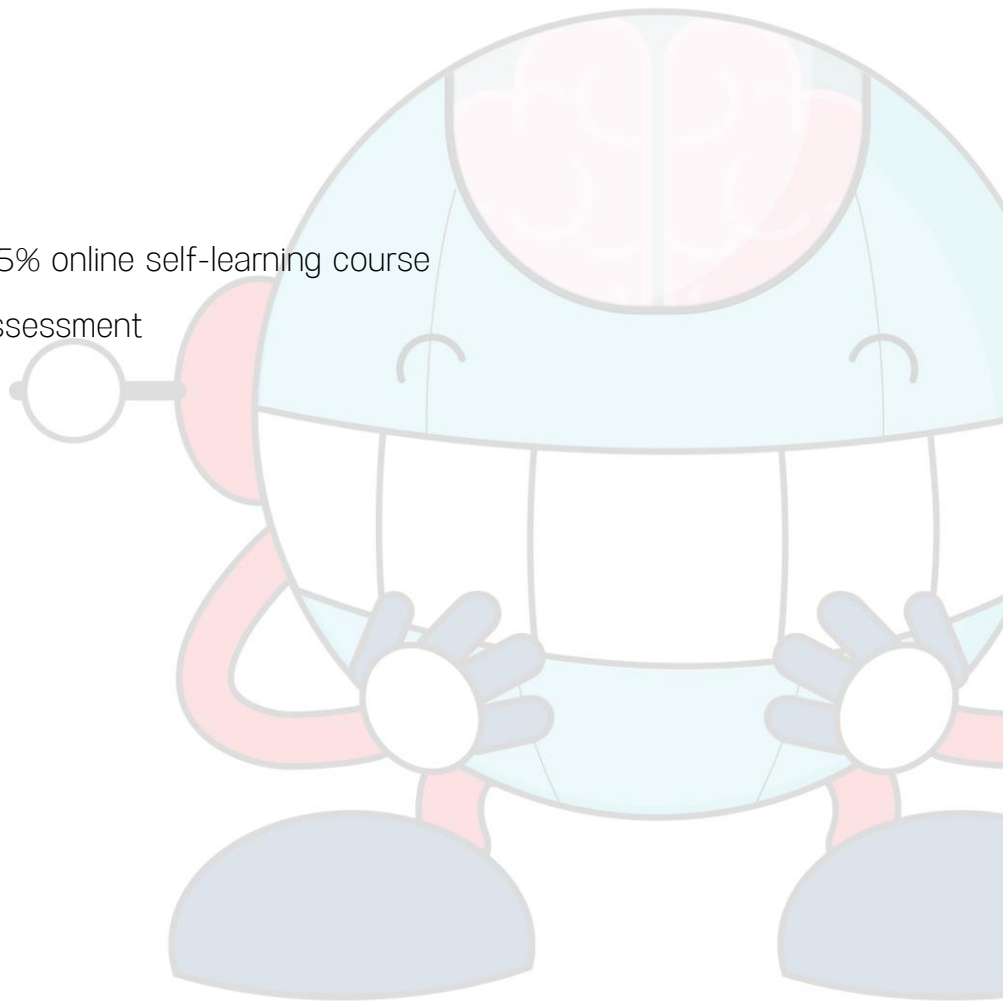
- Adapt risk management practices to overcome specific project situations
- Implement risk management methodologies and frameworks
- Identify and overcome the challenges of risk management in a project

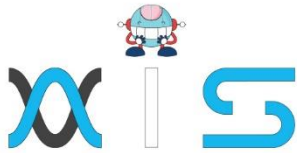
Accreditations:

The Project Management Institute® is the registered education provider for this course.

Certification Criteria:

- Complete minimum of 85% online self-learning course
- Pass the course-end assessment





AIS

With the rising demand in scalable technology, AIS provides tailored goal-setting based on your organization's needs and expectations. With products geared towards the growing needs of your organization's customers and employees, AIS has innovative and value-driven solutions.

Learning Partners



SAS Management, Inc.

SAS Management, Inc. has been a leader in the training, certification and consulting services industry in the Philippines. With offices in Makati, Ortigas and Cebu, Philippines, the company has been the top training and consulting company for over 9 years. In its years of existence, it has provided certificates to over 100,000 professionals including 10,000 participants in the 160+ courses that have been conducted just during the 2020-2021 pandemic alone. The most sought-after courses being offered are ITIL, Project Management Professional (PMP)®, COBIT 5, Six Sigma Yellow Belt, Six Sigma Green Belt, PRINCE2, and organizational skills, among others.



Simplilearn

Simplilearn, based in California and India, is the world's #1 online bootcamp and one of the world's the leading certification and training providers. Simplilearn trained over 2,000,000 professionals with 2,000+ trainers and provides over 400 different courses.

Technology Partner



Freshworks

With over 40,000 customers, Freshworks is a business solutions software provider with products ranging from IT helpdesk and service desk, customer relationship management, live chat, marketing automation, phone system, and HR.

Partners & Affiliates

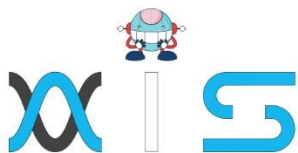


PECB

SDI

EC-COUNCIL





The program presented, as well as a wide range of programs are products of the partnership of AIS, SAS Management, Inc., and Simplilearn. With a common goal of providing the best practice of facilitating learning with an array of choices available in the online platform in this time of digitization.

Office Addresses

NXT AIS Inc.

Juan Antonio III Building
315 Maysilo Circle, Mandaluyong, Philippines

SAS Management, Inc.

- **Head Office**

Unit 1602 Cityland 10 Tower
2 6815 HV dela Costa cor Ayala Avenue
Makati City, Philippines

- **Branch Office**

Unit 204 Villa Building
Jupiter St. corner Makati Avenue
Makati City, Philippines

- **Branch Office**

Room 201 2nd floor OLS Building
443 Gorordo Avenue., Brgy. Kamputhaw
Cebu City, Philippines

- **Branch Office**

Malaysia - SAS Management
Sdn Bhd 6f-16, IOI Business Park,
Persiaran Puchong Jaya
47170, Selangor

Simplilearn

- **Simplilearn Americas, Inc Pvt Ltd.**

201 Spear Street, Suite 1100,
San Francisco, CA 94105 United States

- **Simplilearn Solutions Pte Ltd.**

NALANDA 53/1 C, Manoj Arcade, 24th Main Rd,
Sector 2, HSR Layout, Bengaluru
560102, Karnataka, India.

- **Simplilearn Singapore**

#14-302, The Plaza, 7500A Beach Rd,
Singapore 199591