



Microsoft Certified Azure Developer Associate AZ-204

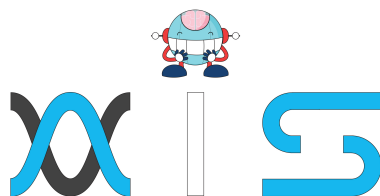




Table of Contents

Program Overview	01
Program Features	01
Delivery Mode	01
Prerequisites	02
Target Audience	02
Key Learning Outcomes	02
Certification Details and Criteria	03
Course Curriculum	03
About	04



Program Overview

The Azure Developer Certification training is aligned with the latest (2020) edition of Microsoft Certified Azure Developer Associate AZ-204. It is an updated version of the earlier certification code AZ-203, which was phased out in February, 2020. This course covers all phases of development, from requirements, definition, and design to development, deployment, and maintenance.

Program Features



60 hours of blended learning



1 course-end assessment



Industry-recognized course completion certificate



Integrated Azure labs for practice



Lifetime access to self-paced course material

Delivery Mode

Online Bootcamp - Live virtual classroom and online self-paced learning



Prerequisites

To take up this course, candidates are expected to have between one and two years of professional development and Microsoft Azure experience. They will be expected to be able to write code using an Azure supported language, such as C#.

Target Audience

The following professionals are best-suited for this course:

- ✓ Professionals aspiring to achieve the Azure Developer – Associate Badge
- ✓ Experts looking for training on Azure Application Services
- ✓ Professionals who already know how to code in at least one of the Azure-supported languages
- ✓ Cloud Evangelists

Key Learning Outcomes

By the end of this online Microsoft Certified Azure Developer Associate AZ-204 training, you will be able to:

- ✓ Implement IaaS solutions using Azure Container Registry and Instance
- ✓ Create and implement Azure App Service web apps
- ✓ Implementing Azure functions using data operations, timers, and webhooks
- ✓ Deploy Cosmos DB storage and blob storage
- ✓ Implement Azure security using authentication and authorization
- ✓ Connect and work on Azure services and third-party services



Certification Details and Criteria



Complete at least 85 percent of the course or attend one complete LVC batch



Pass the course-end assessment project

Course Curriculum

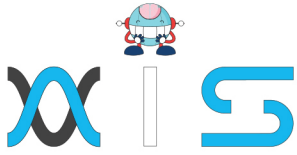
Section 1 - Self-paced Curriculum

- ✔ Section 01 - Course Introduction
 - Lesson 01 - Course Introduction
- ✔ Section 02 - Develop Azure Compute Solutions
 - Lesson 01 - Implement IaaS Solutions
 - Lesson 02 - Create Azure App Service Web Apps
 - Lesson 03 - Implement Azure Functions
- ✔ Section 03 Develop for Azure Storage
 - Lesson 01 - Develop Solutions that use Cosmos DB Storage
 - Lesson 02 - Develop Solutions that use Blob Storage
- ✔ Section 04 - Implement Azure Security
 - Lesson 01 - Implement User Authentication and Authorization
- Lesson 02 - Implement Secure Cloud Solutions
- ✔ Section 05 - Monitor troubleshoot and optimize Azure Solutions
 - Lesson 01 - Integrate Caching and Content Delivery within Solutions
 - Lesson 02 - Instrument Solutions to Support Monitoring and Logging
- ✔ Section 06 - Connect to and Consume Azure Services and third party Services
 - Lesson 01 - Develop an App Service Logic App
 - Lesson 02 - Implement API Management
 - Lesson 03 - Develop Event-based Solutions
 - Lesson 04 - Develop Message-based Solutions



Section 2 - Live Virtual Curriculum

- ✔ Lesson 1: Develop Azure Compute Solutions
 - Implement IaaS Solutions
 - Create Azure App Service Web Apps
 - Implement Azure Functions
- ✔ Lesson 2: Develop for Azure Storage
 - Develop Solutions That Use Cosmos DB Storage
 - Develop Solutions That Use Blob Storage
- ✔ Lesson 3: Implement Azure Security
 - Implement User Authentication and Authorization
 - Implement Secure Cloud Solutions
- ✔ Lesson 4: Monitor, Troubleshoot, and Optimize Azure Solutions
 - Integrate Caching and Content Delivery Within Solutions
 - Instrument Solutions to Support Monitoring and Logging
- ✔ Lesson 5: Connect to and Consume Azure Services and Third-Party Services
 - Develop an App Service Logic App
 - Implement API Management
 - Develop Event-Based Solutions
 -



AIS

With the rising demand in scalable technology, AIS provides tailored goal-setting based on your organization's needs and expectations. With products geared towards the growing needs of your organization's customers and employees, AIS has innovative and value-driven solutions.

Learning Partners



SAS Management, Inc.

Premiere training and consulting services company, SAS Management, Inc. has been in the industry for a decade. SAS Management, inc. focuses on creating value in every learning and consulting experience by providing the best possible output – whether in a virtual classroom setup, e-learning, or face-to-face. SAS Management, Inc. is the leading training and certification provider for ITIL, Project Management Professional, ISO certifications, PRINCE2, SDI Service Desk Analyst and Manager, Agile, and a host of many programs and courses.



Simplilearn

Tagged as the “World's #1 Online Bootcamp”, Simplilearn provides online education and in-house training for professional certification courses. Founded in 2010, Simplilearn offers more than 100 programs, helping professionals reach their learning potentials needed to work in the digital economy.

Technology Partner



Freshworks

With over 40,000 customers, Freshworks is a business solutions software provider with products ranging from IT helpdesk and service desk, customer relationship management, live chat, marketing automation, phone system, and HR.

Partners & Affiliates

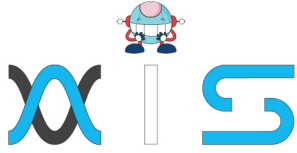


PECB

SDI Service Desk Institute

EC-COUNCIL





The program presented, as well as a wide range of programs are products of the partnership of AIS, SAS Management, Inc., and Simplilearn. With a common goal of providing the best practice of facilitating learning with an array of choices available in the online platform in this time of digitization.

Office Addresses

AI Services

Juan Antonio III Building
315 Maysilo Circle, Mandaluyong, Philippines

SAS Management, Inc.

- **Head Office**

Unit 1602 Cityland 10 Tower
2 6815 HV dela Costa cor Ayala Avenue
Makati City, Philippines

- **Branch Office**

Unit 204 Villa Building
Jupiter St. corner Makati Avenue
Makati City, Philippines

- **Branch Office**

Room 201 2nd floor OLS Building
443 Gorordo Avenue., Brgy. Kamputhaw
Cebu City, Philippines

- **Branch Office**

Malaysia - SAS Management
Sdn Bhd 6f-16, IOI Business Park,
Persiaran Puchong Jaya
47170, Selangor

Simplilearn

- **Simplilearn Americas, Inc
Pvt Ltd.**

201 Spear Street, Suite 1100,
San Francisco, CA 94105 United States

- **Simplilearn Solutions
Pte Ltd.**

NALANDA 53/1 C, Manoj Arcade, 24th Main Rd,
Sector 2, HSR Layout, Bengaluru
560102, Karnataka, India.

- **Simplilearn Singapore**

#14-302, The Plaza, 7500A Beach Rd,
Singapore 199591