

# MICROSOFT CERTIFIED AZURE ADMINISTRATOR ASSOCIATE (AZ-104) TRAINING

\*

Course Outline





## Program Overview

Simplilearn's Azure Administrator training provides you with a deep understanding of the Azure environment's entire administrative lifecycle. This course shows you how to maintain Azure services related to computing, storage, network, and security. Enhance your Azure Administrator skills and prepare to ace the AZ-104 Azure Administrator exam.

## Program Features

- 60 hours of blended learning
- Practice labs and projects with Azure labs
- Access to official Microsoft content aligned to the AZ-104 exam
- 24/7 support with dedicated mentoring sessions

## Delivery Mode

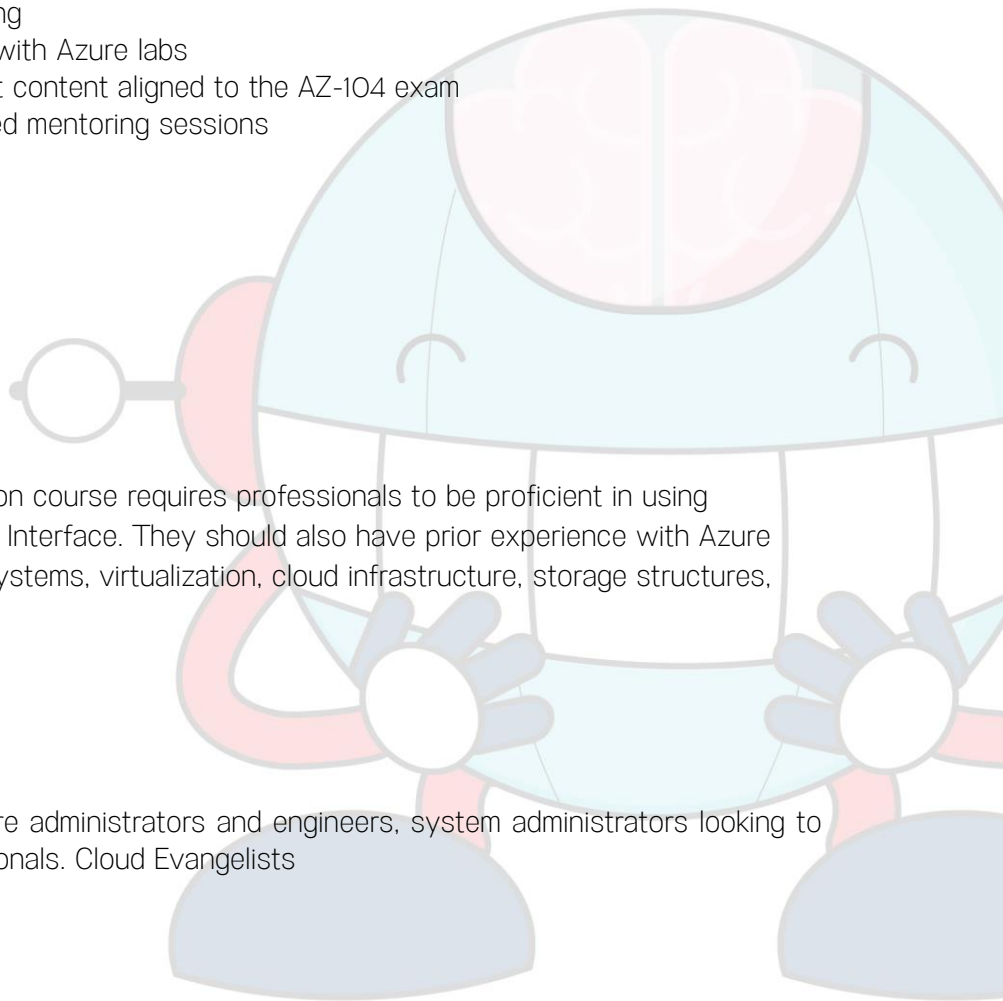
### Blended learning

## Prerequisites

The Azure Administrator certification course requires professionals to be proficient in using PowerShell and the Command Line Interface. They should also have prior experience with Azure Portal, ARM templates, operating systems, virtualization, cloud infrastructure, storage structures, and networking.

## Target Audience

The course is best suited for Azure administrators and engineers, system administrators looking to expand into Azure, and IT professionals. Cloud Evangelists





## Key Learning Outcomes

After completing the Azure Administrator online training course, you will be able to:

- Manage subscriptions, billing, and role-based access control regarding Azure users and groups
- Utilize Azure Monitor to configure alerts and review the Azure Activity Log
- Deploy resources with ARM templates and organize Azure resources
- Implement, manage, and secure storage with shared access keys, Azure backup, and Azure File Sync
- Store and access data using Azure Content Delivery Network and the Import and Export service
- Build, execute, manage, and monitor virtual machines in Azure Portal with Azure PowerShell
- Use Azure DNS domains, zones, record types, and resolution methods
- Execute site connectivity schemas comprising VNet-to-VNet connections and virtual network peering
- Integrate, secure, and manage identities with Azure Active Directory, Self-Service Password Reset, Azure AD Identity Protection, and integrated SaaS applications
- Migrate servers to Azure
- Implement use cases and configuration options for Azure App Services and App Service environments
- Manage and secure web apps with backup, restore, snapshot, and cloning
- Deploy serverless computing features such as Azure Functions, Event Grid, and Service Bus
- Configure Azure Load Balancer, Azure Traffic Manager, and Azure Application Gateway
- Use Azure RBAC to grant a granular level of access based on an administrator's assigned tasks
- Utilize Azure Multi-factor Authentication to configure strong authentication for users at sign-in
- Execute Azure AD Privileged Identity Management to configure access rights based on the just-in-time administration

## Certification Alignment:

Simplilearn is a Silver Microsoft Partner, and this course is accredited by Microsoft.



### Certification Details & Criteria:

To earn Azure Developer certification, you must pass the following exam:

AZ-104: Microsoft Azure Administrator

NOTE: This exam is a replacement of AZ-103: Microsoft Azure Administrator which got updated to AZ-104 on APRIL 2, 2020. You will be able to take the old exam until it retires on August 31, 2020. The exam costs \$165.00 plus tax for US residents and INR 4800 plus tax for India residents. This fee is paid to Microsoft when you register for your exam.

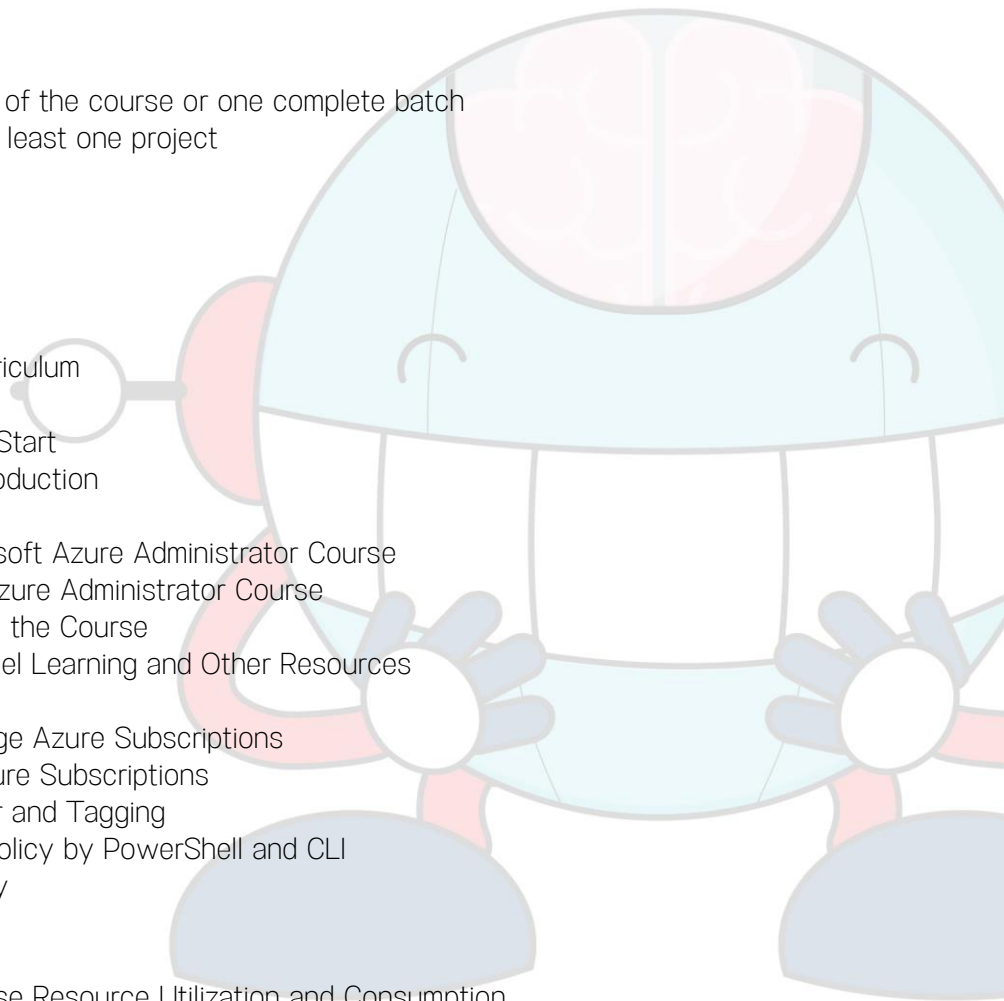
### Simplilearn Course Completion:

- Attend at least 85 percent of the course or one complete batch
- Successful evaluation in at least one project

### Course Curriculum:

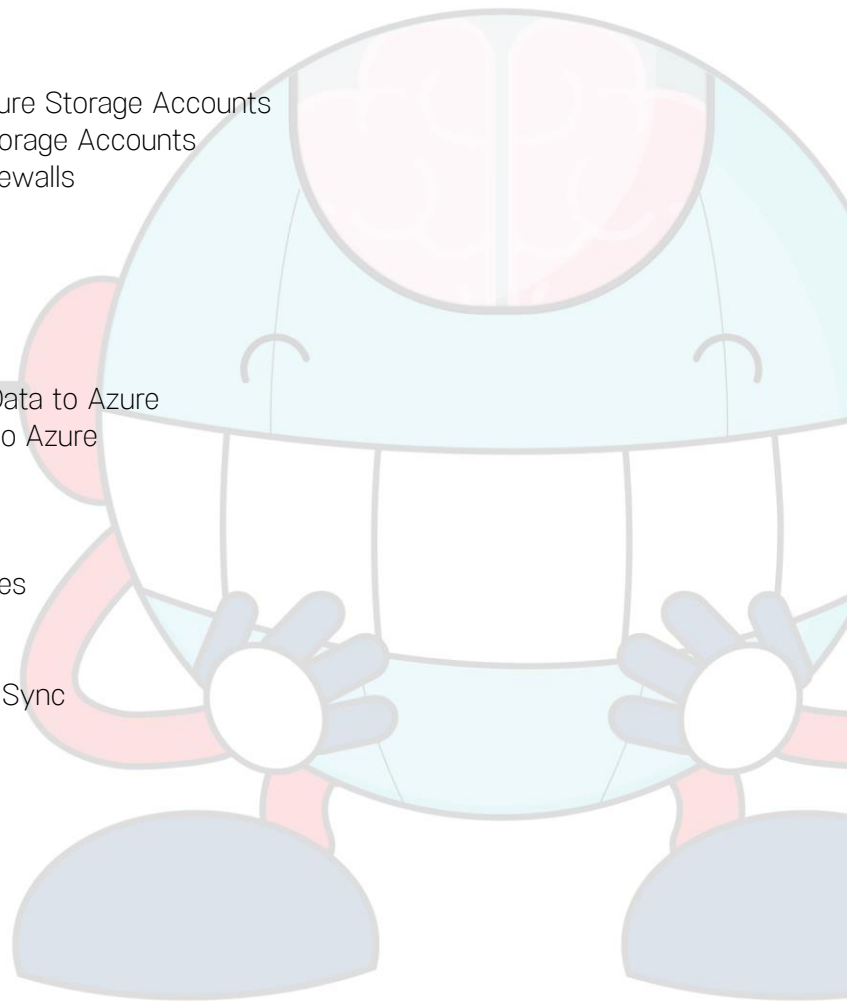
Self Placed Learning Curriculum

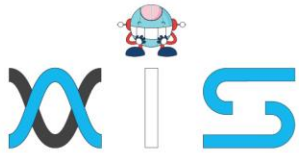
- **Section 01:** Self-paced Curriculum
  - Section 01 - Quick Start
    - Course Introduction
  - Section 02 - Microsoft Azure Administrator Course
    - Microsoft Azure Administrator Course
    - Welcome to the Course
    - Multi-Channel Learning and Other Resources
  - Section 03 - Manage Azure Subscriptions
    - Manage Azure Subscriptions
    - Cost Center and Tagging
    - Managing Policy by PowerShell and CLI
    - Azure Policy
  - Section 04 - Analyse Resource Utilization and Consumption



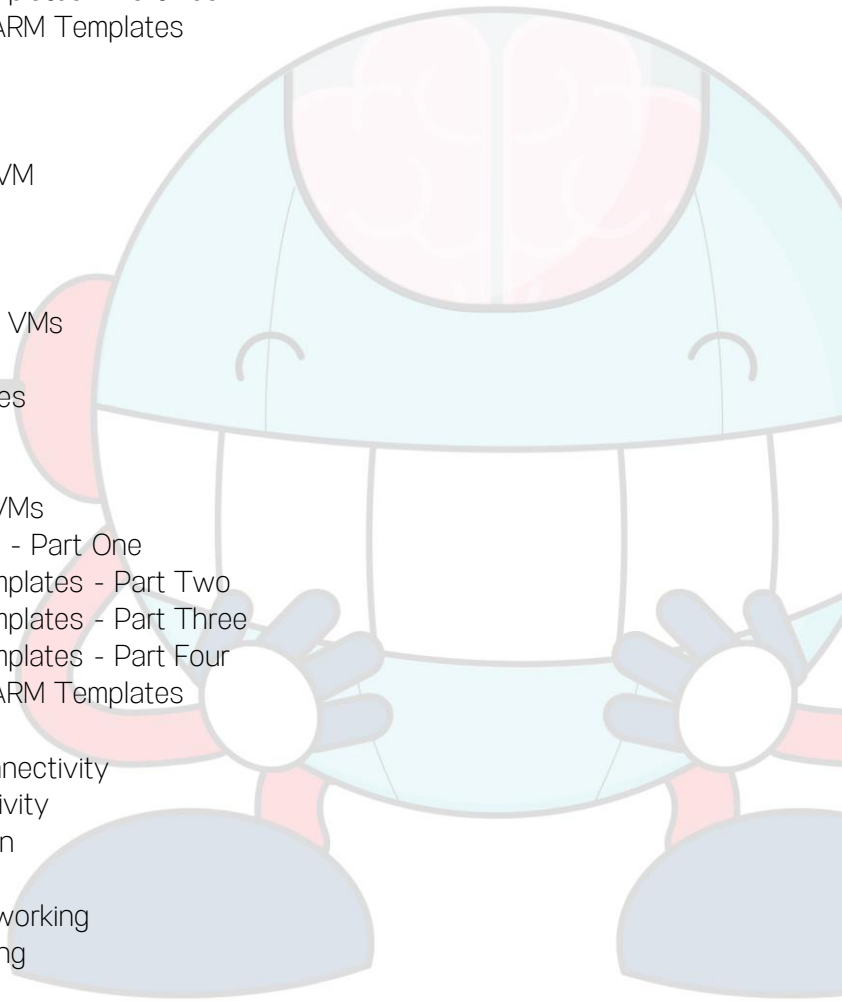


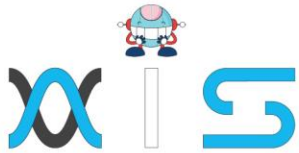
- Diagnostics
  - Baseline Environment
  - Create Alerts
  - Create Metrics
  - Action Groups
  - Manage Costs
  - Log Analytics
- Section 05 - Manage Resource Groups
    - Resource Group
    - Policy
    - Move Resources
    - Section One Wrap Up
  - Section 06 - Create and Configure Storage Accounts
    - Create and Configure Storage Accounts
    - Virtual Networks and Firewalls
    - Access Keys and SAS
    - Storage Explorer
    - Log Analytics
    - Redundant Storage
  - Section 07- Import and Export Data to Azure
    - Import and Export Data to Azure
    - Blob Storage
    - CDN
  - Section 08- Configure Azure Files
    - Configure Azure Files
    - Azure File Sync
    - Troubleshoot Azure File Sync
  - Section 09 - Azure Backup
    - Azure Backup
    - On-Premises Backup
    - Backup Reports
    - Section 2 Wrap Up



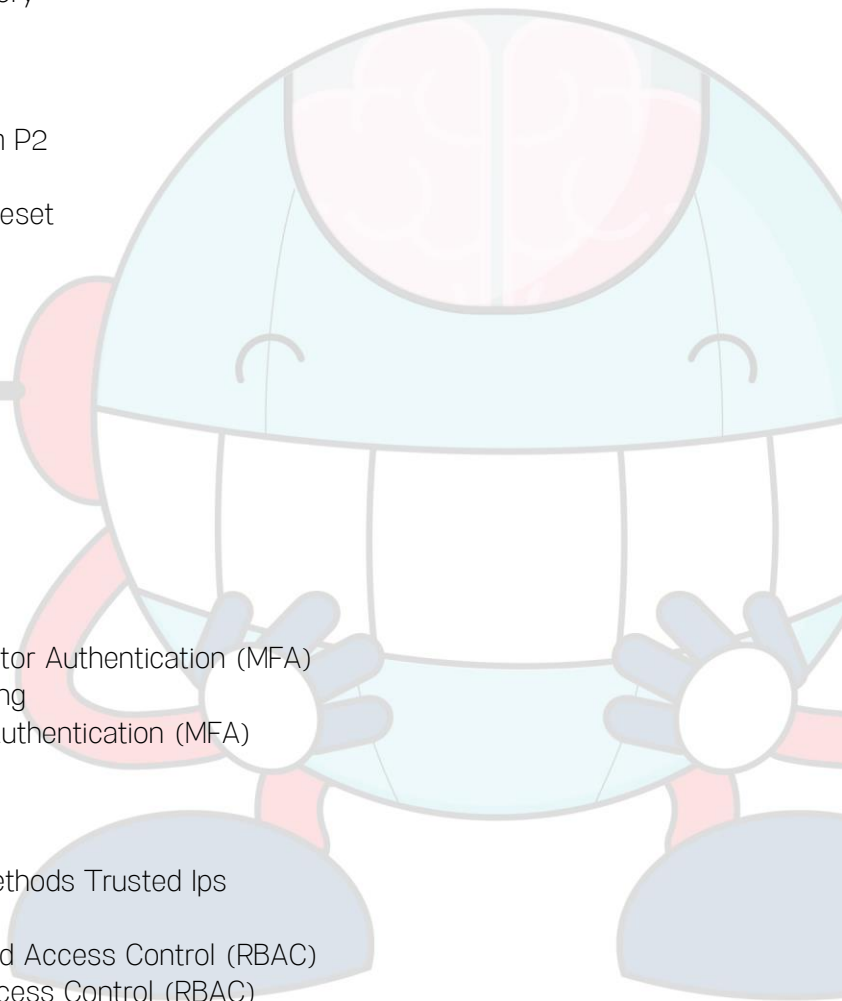


- Section 10- Azure Virtual Machines
  - Azure Virtual Machines
  - Connect to a Virtual Machine
  - VM Availability
  - VM Monitoring
  - Virtual Machine Scale Sets (VMSS)
- Section 11- Windows and Linux VMs
  - Windows and Linux VMs - Part One
  - Modify Existing ARM Templates - Part Two
  - Modify Existing ARM Templates - Part Three
  - Modify Existing ARM Templates - Part Four
  - Deploy Linux VM Using ARM Templates
- Section 12- Manage Azure VM
  - Manage Azure VM
  - Add NIC Interfaces to a VM
  - Change VM Size
  - Redeploy a VM
- Section 13 - Windows and Linux VMs
  - Manage VM Backups VM
  - Backup Jobs and Restores
  - Wrap Up
- Section 11- Windows and Linux VMs
  - Windows and Linux VMs - Part One
  - Modify Existing ARM Templates - Part Two
  - Modify Existing ARM Templates - Part Three
  - Modify Existing ARM Templates - Part Four
  - Deploy Linux VM Using ARM Templates
- Section 14 - Virtual Network Connectivity
  - Virtual Network Connectivity
  - VNet-to-VNet Connection
- Section 15 - Manage Virtual Networking
  - Manage Virtual Networking
  - Public IP Addresses

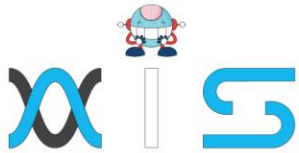




- Network Routing
- Section 16- Windows and Linux VMs
  - DNS
  - Assign a Custom Domain
- Section 17 - Network Security Groups
  - Network Security Groups
  - Implement Effective NSG Rules
  - Wrap Up
- Section 18 - Azure Active Directory
  - Azure Active Directory
  - Create Azure AD
  - Add Custom Domains
  - Trial Upgrade to Premium P2
  - AD Identity Protection
  - Self Service Password Reset
  - Conditional Access
  - Access Reviews
- Section 19 - Manage AD Objects
  - Manage AD Objects
  - Manage Devices
- Section 20 - Hybrid Identities
  - Hybrid Identities
  - Wrap Up
- Section 21 - Implement Multi-Factor Authentication (MFA)
  - Manage Virtual Networking
  - Implement Multi-Factor Authentication (MFA)
  - AAD Conditional Access
  - Configuring Fraud Alerts
  - MFA One Time Bypass
  - AAD MFA Verification Methods Trusted Ips
- Section 22- Managed Role-Based Access Control (RBAC)
  - Managed Role-Based Access Control (RBAC)







- Creating Custom RBAC Roles Assign a Custom Domain
- Section 23 - Implement Azure Load Balancer
  - Implement Azure Load Balancer
  - Setup Load Balancer
  - Front End IP Configuration
- Section 24 - Monitor and Troubleshoot Virtual Networking
  - Monitor and Troubleshoot Virtual Networking
  - Network Watcher

#### Live Virtual Class Curriculum:

##### Manage Azure identities and governance

- Manage Azure AD objects
- Manage role-based access control (RBAC)
- Manage subscriptions and governance

##### Implement and manage storage

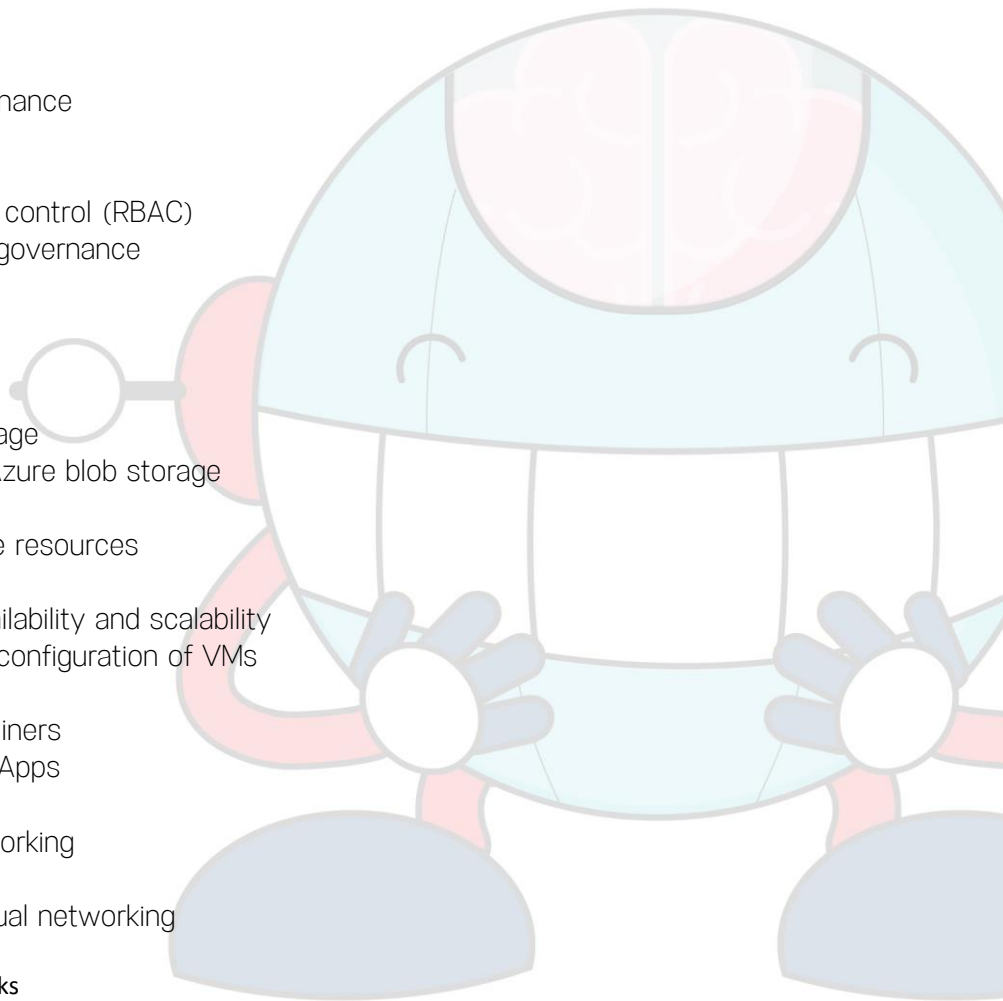
- Manage storage accounts
- Manage data in Azure Storage
- Configure Azure files and Azure blob storage

##### Deploy and manage Azure compute resources

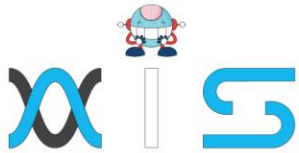
- Configure VMs for high availability and scalability
- Automate deployment and configuration of VMs
- Create and configure VMs
- Create and configure containers
- Create and configure Web Apps

##### Configure and manage virtual networking

- Implement and manage virtual networking
- **Configure name resolution**
- **Secure access to virtual networks**







- Configure load balancing
- Monitor and troubleshoot virtual networking
- Integrate an on-premises network with an Azure virtual network

Monitor and back up Azure resources

- Monitor resources by using Azure Monitor
- Implement backup and recovery

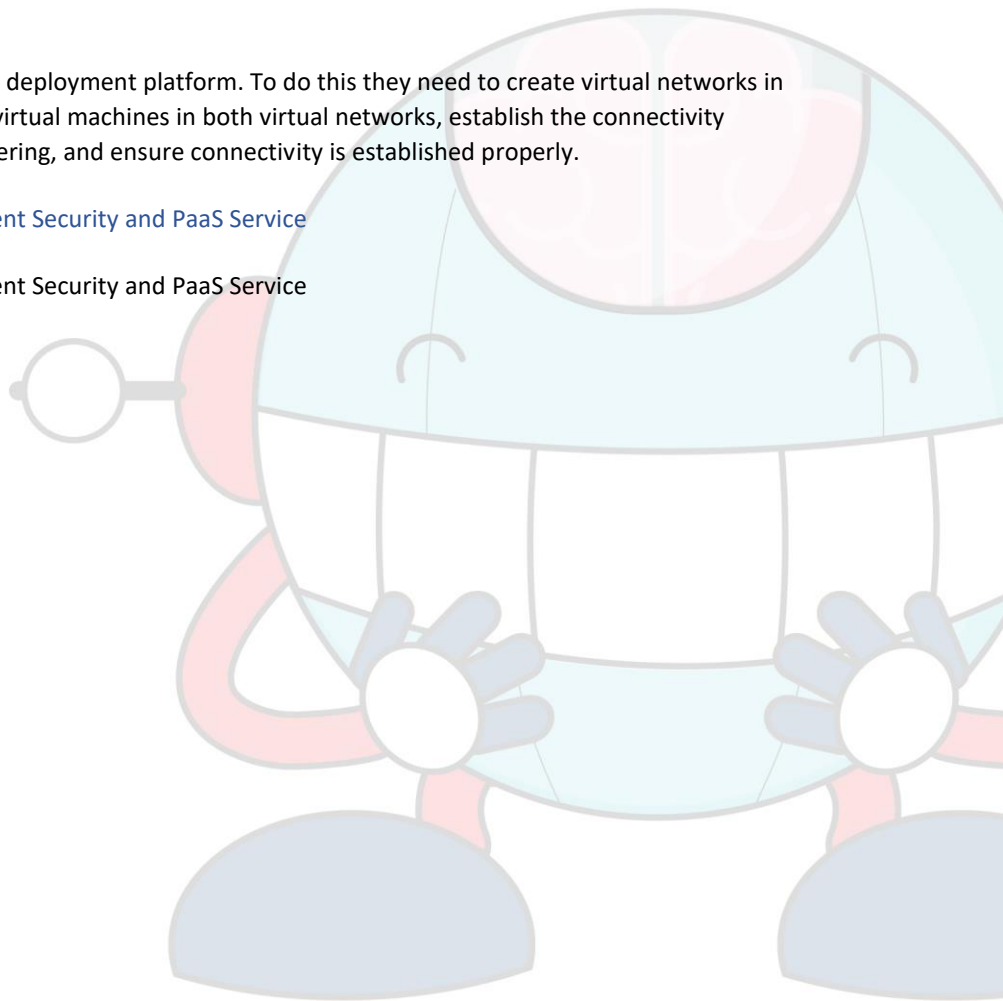
#### Course End Projects:

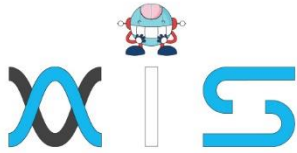
##### Project 1: Implement the Azure IaaS

OSS Corporation is evaluating Azure as a deployment platform. To do this they need to create virtual networks in the aforementioned region, create test virtual machines in both virtual networks, establish the connectivity between both the networks via VNet peering, and ensure connectivity is established properly.

##### Project 2: Using Azure Portal to Implement Security and PaaS Service

Project 2: Using Azure Portal to Implement Security and PaaS Service





## AIS

With the rising demand in scalable technology, AIS provides tailored goal-setting based on your organization's needs and expectations. With products geared towards the growing needs of your organization's customers and employees, AIS has innovative and value-driven solutions.

### Learning Partners



#### SAS Management, Inc.

SAS Management, Inc. has been a leader in the training, certification and consulting services industry in the Philippines. With offices in Makati, Ortigas and Cebu, Philippines, the company has been the top training and consulting company for over 9 years. In its years of existence, it has provided certificates to over 100,000 professionals including 10,000 participants in the 160+ courses that have been conducted just during the 2020-2021 pandemic alone. The most sought-after courses being offered are ITIL, Project Management Professional (PMP)®, COBIT 5, Six Sigma Yellow Belt, Six Sigma Green Belt, PRINCE2, and organizational skills, among others.



#### Simplilearn

Simplilearn, based in California and India, is the world's #1 online bootcamp and one of the world's the leading certification and training providers. Simplilearn trained over 2,000,000 professionals with 2,000+ trainers and provides over 400 different courses.

### Technology Partner



#### Freshworks

With over 40,000 customers, Freshworks is a business solutions software provider with products ranging from IT helpdesk and service desk, customer relationship management, live chat, marketing automation, phone system, and HR.

### Partners & Affiliates

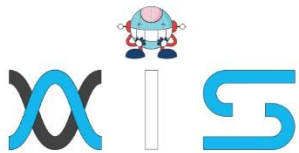


PECB

SDI Service Desk Institute

EC-COUNCIL





*The program presented, as well as a wide range of programs are products of the partnership of AIS, SAS Management, Inc., and Simplilearn. With a common goal of providing the best practice of facilitating learning with an array of choices available in the online platform in this time of digitization.*

## Office Addresses

### NXT AIS Inc.

Juan Antonio III Building  
315 Maysilo Circle, Mandaluyong, Philippines

### SAS Management, Inc.

- **Head Office**

Unit 1602 Cityland 10 Tower  
2 6815 HV dela Costa cor Ayala Avenue  
Makati City, Philippines

- **Branch Office**

Unit 204 Villa Building  
Jupiter St. corner Makati Avenue  
Makati City, Philippines

- **Branch Office**

Room 201 2nd floor OLS Building  
443 Gorordo Avenue., Brgy. Kamputhaw  
Cebu City, Philippines

- **Branch Office**

Malaysia - SAS Management  
Sdn Bhd 6f-16, IOI Business Park,  
Persiaran Puchong Jaya  
47170, Selangor

### Simplilearn

- **Simplilearn Americas, Inc  
Pvt Ltd.**

201 Spear Street, Suite 1100,  
San Francisco, CA 94105 United States

- **Simplilearn Solutions  
Pte Ltd.**

NALANDA 53/1 C, Manoj Arcade, 24th Main Rd,  
Sector 2, HSR Layout, Bengaluru  
560102, Karnataka, India.

- **Simplilearn Singapore**

#14-302, The Plaza, 7500A Beach Rd,  
Singapore 199591