

MICROSOFT AZURE FUNDAMENTALS TRAINING

Course Outline





Program Overview

Simplilearn's Microsoft Azure Fundamentals Training Course will familiarize you with the main principles of cloud computing and how they have been implemented in Microsoft Azure. This course will get you up to speed on Azure services, security, privacy, compliance, trust, pricing, and support.

Program Features

- 28 hours of instructor-led training
- 12 hours of self-paced learning Industry-recognized course completion certificate
- Lifetime access to Online Self-paced Learning videos
- 24/7 support with dedicated mentoring sessions

Delivery Mode

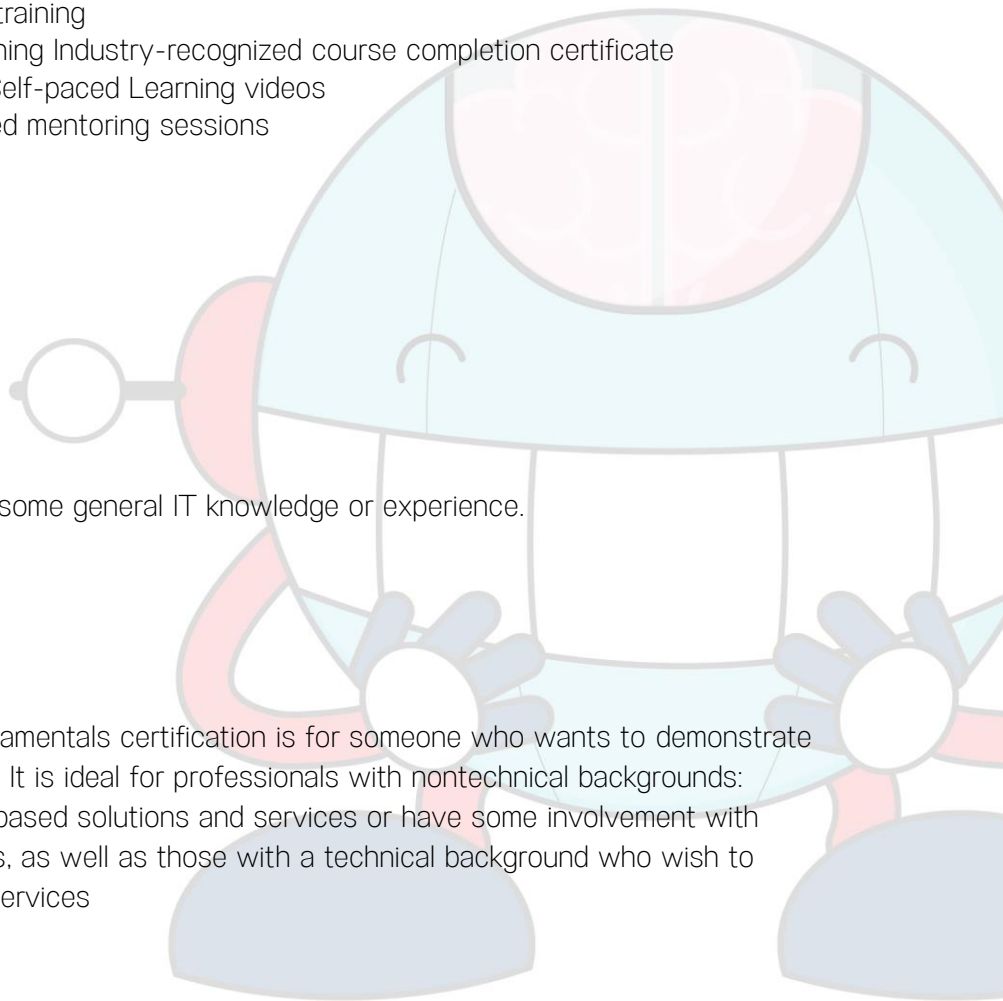
Online self-paced learning

Prerequisites

For this course, you need to have some general IT knowledge or experience.

Target Audience

The AZ-900 Microsoft Azure Fundamentals certification is for someone who wants to demonstrate basic knowledge of cloud services. It is ideal for professionals with nontechnical backgrounds: those who sell or purchase cloud-based solutions and services or have some involvement with cloud-based solutions and services, as well as those with a technical background who wish to validate their knowledge of cloud services





Key Learning Outcomes

After completing this course, you will be able to:

- Describe and create Azure web apps
- Describe Azure storage
- Describe and deploy databases in Azure
- Describe Azure AD
- Describe cloud computing, Azure, and Azure subscriptions
- Create and configure VMs in Microsoft Azure

Certification Details & Criteria:

Certification Details - The AZ-900: Microsoft Azure Fundamentals exam can be taken as an optional first step to learning about cloud services and how they're exemplified by Microsoft Azure. The cost of the AZ-900: Microsoft Azure Fundamentals exam is \$99.00 USD plus tax or INR 3696 plus tax. This fee is paid to Microsoft when you register for your exam. The exam consists of 40-60 multiple choice questions and is 85 minutes long. The passing score for the AZ-900: Microsoft Azure Fundamentals exam is 700 points out of 1000.

Simplilearn Completion Criteria:

- Complete at least 85 percent of the course or attend one complete batch
- Successfully pass the assessment test with a score of at least 70 percent

Course Curriculum:

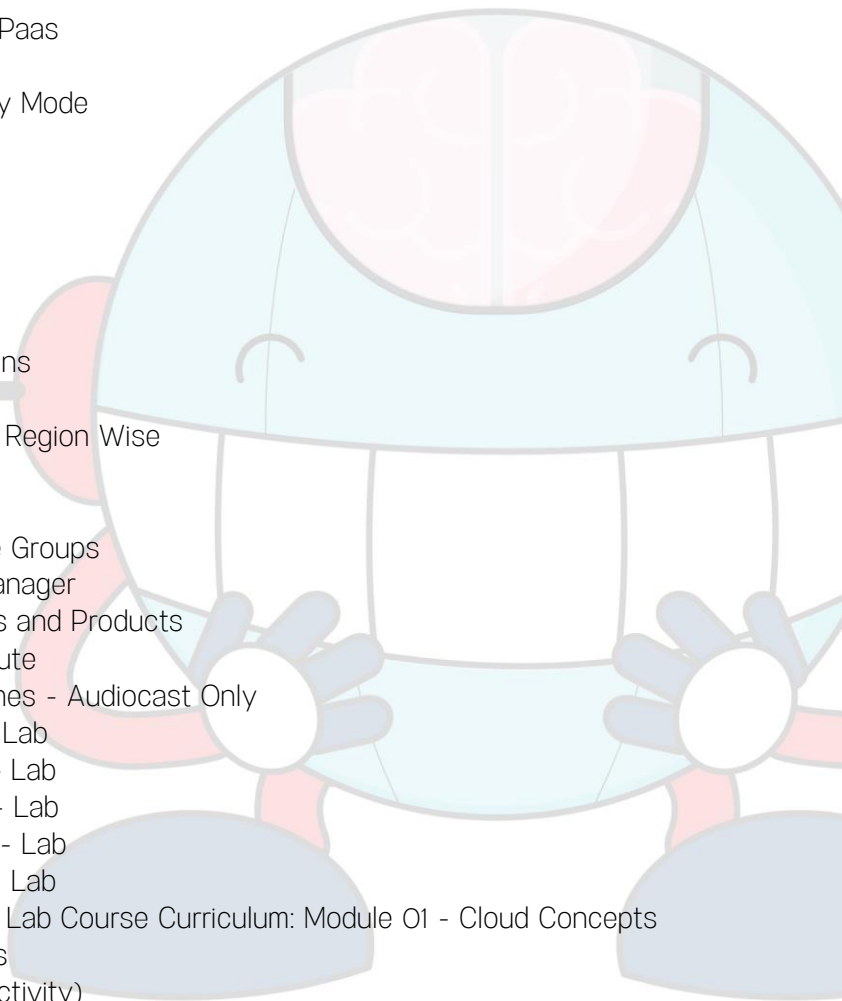
- **Module 01 - Cloud Concepts**
 - Lesson 01 - Introduction
 - Lesson 02 - What is Cloud Computing
 - Lesson 03 - What is CC
 - Lesson 04 - benefits of cloud computing
 - Lesson 05 - Key Concepts and Terminology
 - Lesson 06 - Economies of Scale



- Lesson 07 - Capex vs Opex
- Lesson 08 - Public cloud
- Lesson 09 - Characteristics of Public Cloud
- Lesson 10 - Private Cloud
- Lesson 11 - Characteristics of Private Cloud
- Lesson 12 - Hybrid Cloud
- Lesson 13 - Characteristics of Hybrid Cloud
- Lesson 14 - Review and what next
- Lesson 15 - IAAS
- Lesson 16 - Use cases of IAAS
- Lesson 17 - What is PaaS
- Lesson 18 - Common Scenarios PaaS
- Lesson 19 - What is SaaS
- Lesson 20 - Share Responsibility Mode

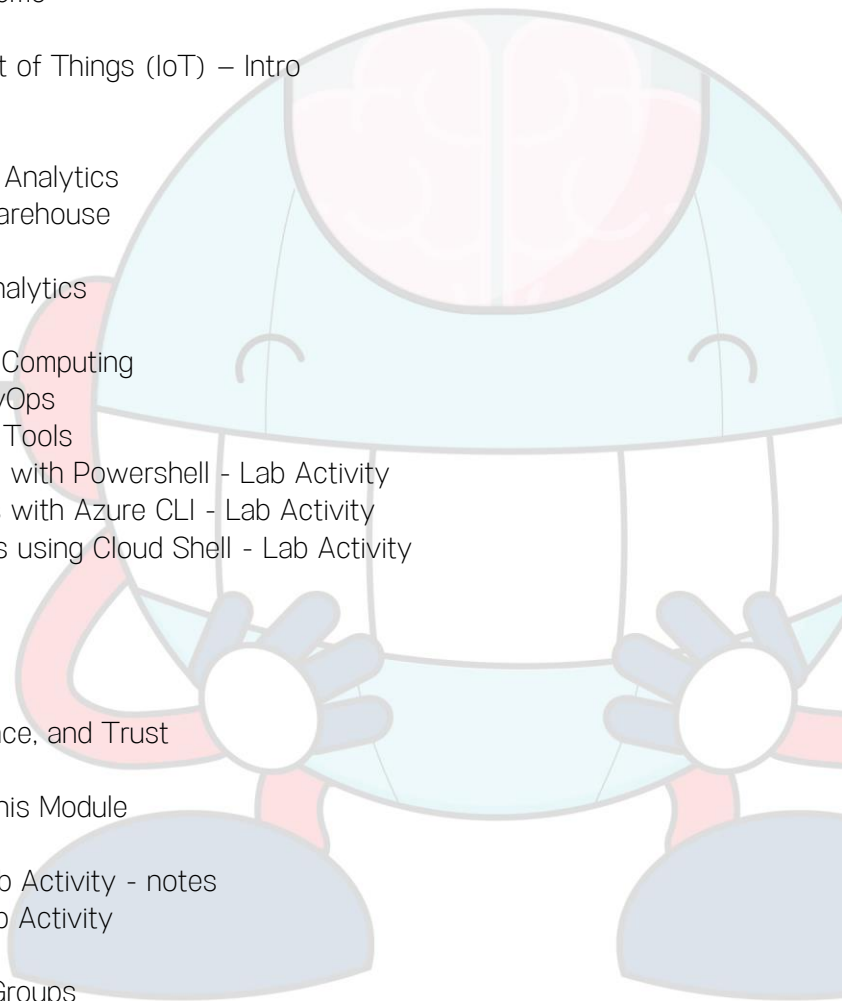
- **Module 02 - Core Azure Services**

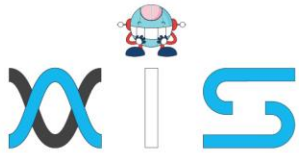
- Lesson 01 - Introduction
- Lesson 02 - Azure Regions
- Lesson 03 - Special Azure regions
- Lesson 04 - Region pairs
- Lesson 05 - Feature Availability Region Wise
- Lesson 06 - Availability Zones
- Lesson 07 - Availability Sets
- Lesson 08 - What are Resource Groups
- Lesson 09 - Azure Resource Manager
- Lesson 10 - Azure Core Services and Products
- Lesson 11 - What is Azure Compute
- Lesson 12 - Azure Virtual Machines - Audiocast Only
- Lesson 13 - Virtual Machines I - Lab
- Lesson 14 - Virtual Machines II - Lab
- Lesson 15 - Virtual Machines III - Lab
- Lesson 16 - Virtual Machines IV - Lab
- Lesson 17 - Virtual Machines V - Lab
- Lesson 18 - Virtual Machine VI - Lab
- Lesson 19 - What are Containers
- Lesson 20 - Containers (Lab Activity)
- Lesson 21 - What Are Virtual Networks



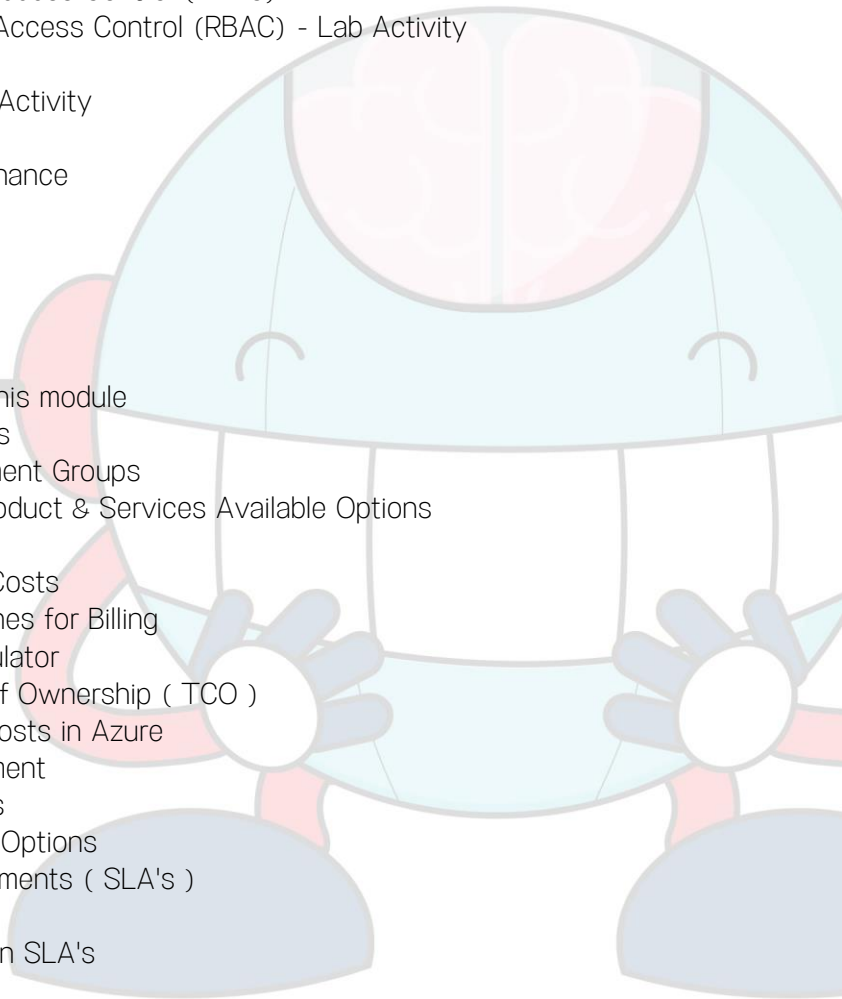


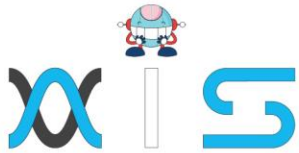
- Lesson 22 - Virtual Networks Lab
 - Lesson 23 - Azure Load Balancer
 - Lesson 24 - VPN Gateway
 - Lesson 25 - Azure Application Gateway - I
 - Lesson 26 - Azure Content Delivery Networks (CDN's)
 - Lesson 27 - Azure Storage Services
 - Lesson 28 - Structured Data
 - Lesson 29 - Semi-Structured Data
 - Lesson 30 - Unstructured Data
 - Lesson 31 - Azure Database Services
 - Lesson 32 - Azure SQL - Lab Demo
 - Lesson 33 - Azure Marketplace
 - Lesson 34 - What is the Internet of Things (IoT) – Intro
 - Lesson 35 - IoT Hub
 - Lesson 36 - IOT Hub Demo
 - Lesson 37 - Azure Big Data and Analytics
 - Lesson 38 - Azure SQL Data Warehouse
 - Lesson 39 - Azure HDInsights
 - Lesson 40 - Azure Data Lake Analytics
 - Lesson 41 - Machine Learning
 - Lesson 42 - What is Serverless Computing
 - Lesson 43 - The concept of DevOps
 - Lesson 44 - Azure Management Tools
 - Lesson 45 - Creating Resources with Powershell - Lab Activity
 - Lesson 46 - Creating Resources with Azure CLI - Lab Activity
 - Lesson 47 - Provision Resources using Cloud Shell - Lab Activity
 - Lesson 48 Azure advisor
 - Lesson 49 What did we learn
-
- **Module 03 - Security, Privacy, Compliance, and Trust**
 - Lesson 01 - What to expect in this Module
 - Lesson 02 - Azure Firewalls
 - Lesson 03 - Azure Firewall - Lab Activity - notes
 - Lesson 04 - Azure Firewall - Lab Activity
 - Lesson 05 - Azure DDOS
 - Lesson 06 - Network Security Groups
 - Lesson 07 - Application Security Groups



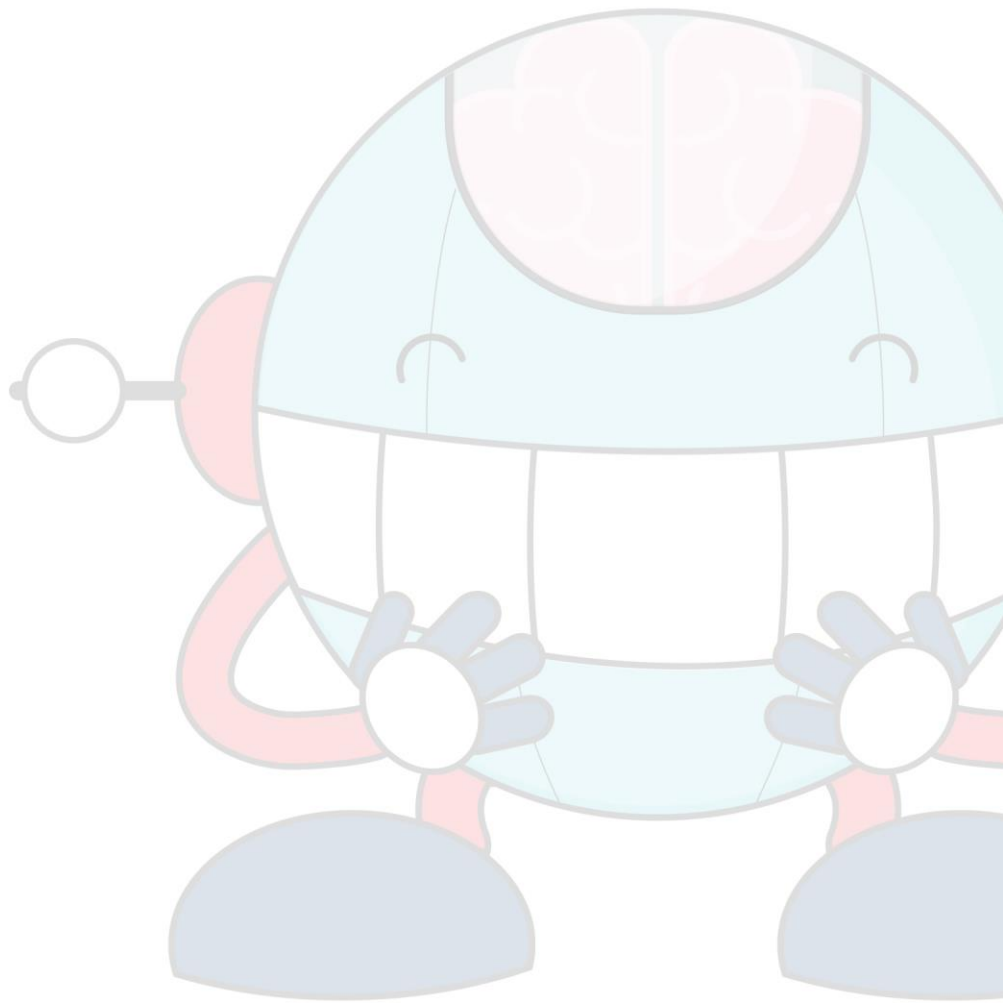


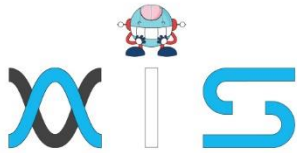
- Lesson 08 - Which Network Security Solution to choose from
 - Lesson 09 - Authentication and Authorization
 - Lesson 10 - Azure Active Directory Lesson 11 - Multi-Factor Authentication
 - Lesson 12 - Azure Security Center Lesson 08 - What are Resource Groups
 - Lesson 13 - Azure Security Center - Lab Activity
 - Lesson 14 - Azure Key Vault
 - Lesson 15 - Azure Information Protection
 - Lesson 16 - Azure Advanced Threat Protection
 - Lesson 17 - What is Azure Policy
 - Lesson 18 - Azure Policy - Lab Activity
 - Lesson 19 - Azure Role-Based Access Control (RBAC)
 - Lesson 20 - Azure Role-Based Access Control (RBAC) - Lab Activity
 - Lesson 21 - Azure Locks
 - Lesson 22 - Azure Locks - Lab Activity
 - Lesson 23 - Azure Blueprints
 - Lesson 24 - Subscription Governance
 - Lesson 25 - Azure Tags
-
- **Module 04 - Azure Pricing and Support**
 - Lesson 01 - What to expect in this module
 - Lesson 02 - Azure Subscriptions
 - Lesson 03 - What are Management Groups
 - Lesson 04 - Purchase Azure Product & Services Available Options
 - Lesson 05 - Usage Metrics
 - Lesson 06 - Factors Affecting Costs
 - Lesson 07 - The concept of Zones for Billing
 - Lesson 08 - Azure Pricing Calculator
 - Lesson 09 - Azure Total Cost of Ownership (TCO)
 - Lesson 10 - Ways to Minimize Costs in Azure
 - Lesson 11 - Azure Cost Management
 - Lesson 12 - Azure Support Plans
 - Lesson 13 - Alternative Support Options
 - Lesson 14 - Service Level Agreements (SLA's)
 - Lesson 15 - Composite SLA's
 - Lesson 16 - Improving Application SLA's
 - Lesson 17 - Public and Features
 - Lesson 18 - Providing Feedback





- Lesson 19 - General Availability
- Lesson 20 - Azure Updates, Announcements and Roadmaps
- Lesson 21 - Conclusion





AIS

With the rising demand in scalable technology, AIS provides tailored goal-setting based on your organization's needs and expectations. With products geared towards the growing needs of your organization's customers and employees, AIS has innovative and value-driven solutions.

Learning Partners



SAS Management, Inc.

SAS Management, Inc. has been a leader in the training, certification and consulting services industry in the Philippines. With offices in Makati, Ortigas and Cebu, Philippines, the company has been the top training and consulting company for over 9 years. In its years of existence, it has provided certificates to over 100,000 professionals including 10,000 participants in the 160+ courses that have been conducted just during the 2020-2021 pandemic alone. The most sought-after courses being offered are ITIL, Project Management Professional (PMP)®, COBIT 5, Six Sigma Yellow Belt, Six Sigma Green Belt, PRINCE2, and organizational skills, among others.



Simplilearn

Simplilearn, based in California and India, is the world's #1 online bootcamp and one of the world's the leading certification and training providers. Simplilearn trained over 2,000,000 professionals with 2,000+ trainers and provides over 400 different courses.

Technology Partner



Freshworks

With over 40,000 customers, Freshworks is a business solutions software provider with products ranging from IT helpdesk and service desk, customer relationship management, live chat, marketing automation, phone system, and HR.

Partners & Affiliates

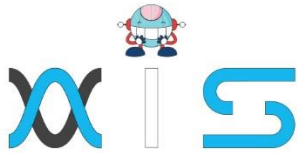


PECB

SDI Service Desk Institute

EC-COUNCIL





The program presented, as well as a wide range of programs are products of the partnership of AIS, SAS Management, Inc., and Simplilearn. With a common goal of providing the best practice of facilitating learning with an array of choices available in the online platform in this time of digitization.

Office Addresses

NXT AIS Inc.

Juan Antonio III Building
315 Maysilo Circle, Mandaluyong, Philippines

SAS Management, Inc.

- **Head Office**

Unit 1602 Cityland 10 Tower
2 6815 HV dela Costa cor Ayala Avenue
Makati City, Philippines

- **Branch Office**

Unit 204 Villa Building
Jupiter St. corner Makati Avenue
Makati City, Philippines

- **Branch Office**

Room 201 2nd floor OLS Building
443 Gorordo Avenue., Brgy. Kamputhaw
Cebu City, Philippines

- **Branch Office**

Malaysia - SAS Management
Sdn Bhd 6f-16, IOI Business Park,
Persiaran Puchong Jaya
47170, Selangor

Simplilearn

- **Simplilearn Americas, Inc
Pvt Ltd.**

201 Spear Street, Suite 1100,
San Francisco, CA 94105 United States

- **Simplilearn Solutions
Pte Ltd.**

NALANDA 53/1 C, Manoj Arcade, 24th Main Rd,
Sector 2, HSR Layout, Bengaluru
560102, Karnataka, India.

- **Simplilearn Singapore**

#14-302, The Plaza, 7500A Beach Rd,
Singapore 199591