

# LEAN SIX SIGMA GREEN BELT

## Course Outline





## Course Overview:

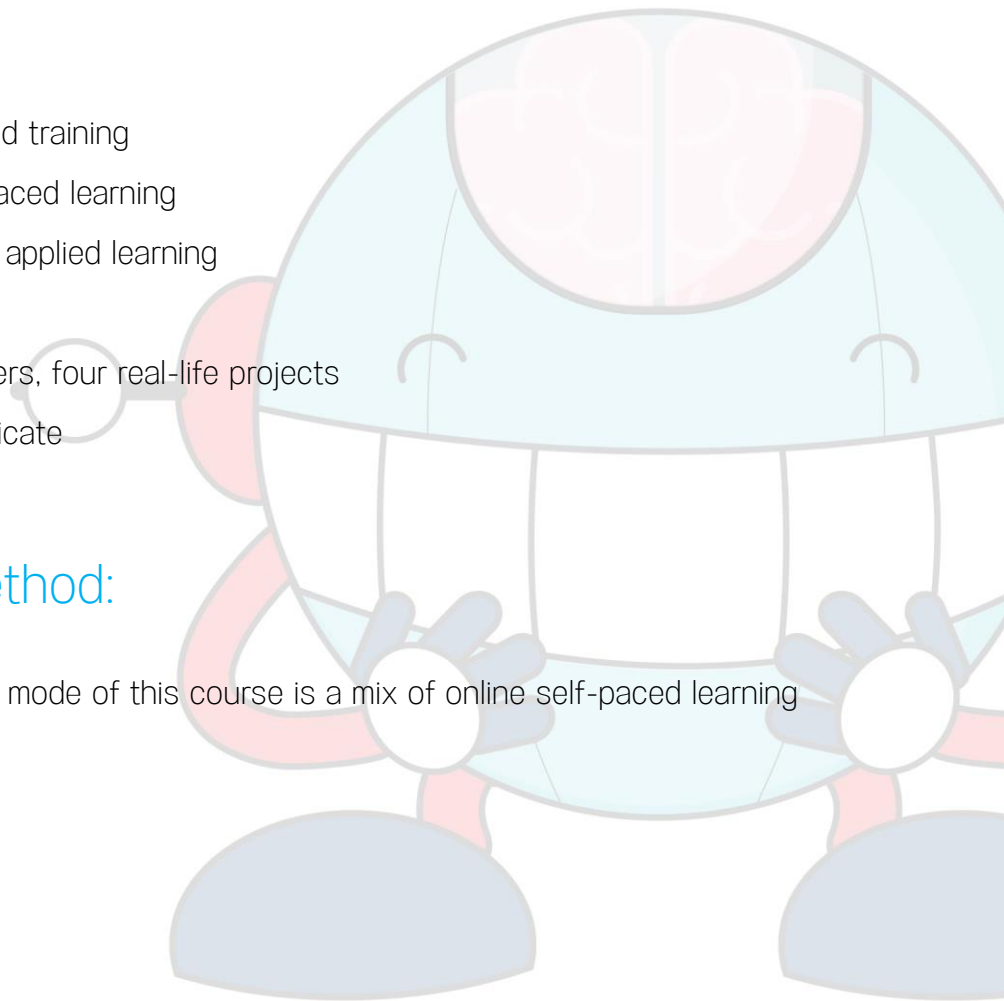
Improve processes by identifying process issues and formulating solutions with help of Lean Six Sigma and DMAIC methodologies. Aligned with the International Association for Six Sigma Certification (IASSC™) and the American Society for Quality (ASQ), this course equips you with the skills required to facilitate an organization's growth.

## Course Highlights:

- 40 hours of instructor-led training
- 16 hours of online self-paced learning
- 56 hours of high-quality applied learning
- 33 PDUs
- Four simulation test papers, four real-life projects
- Course completion certificate

## Course Delivery Method:

Online bootcamp - The delivery mode of this course is a mix of online self-paced learning and live virtual classroom.





## Prerequisites:

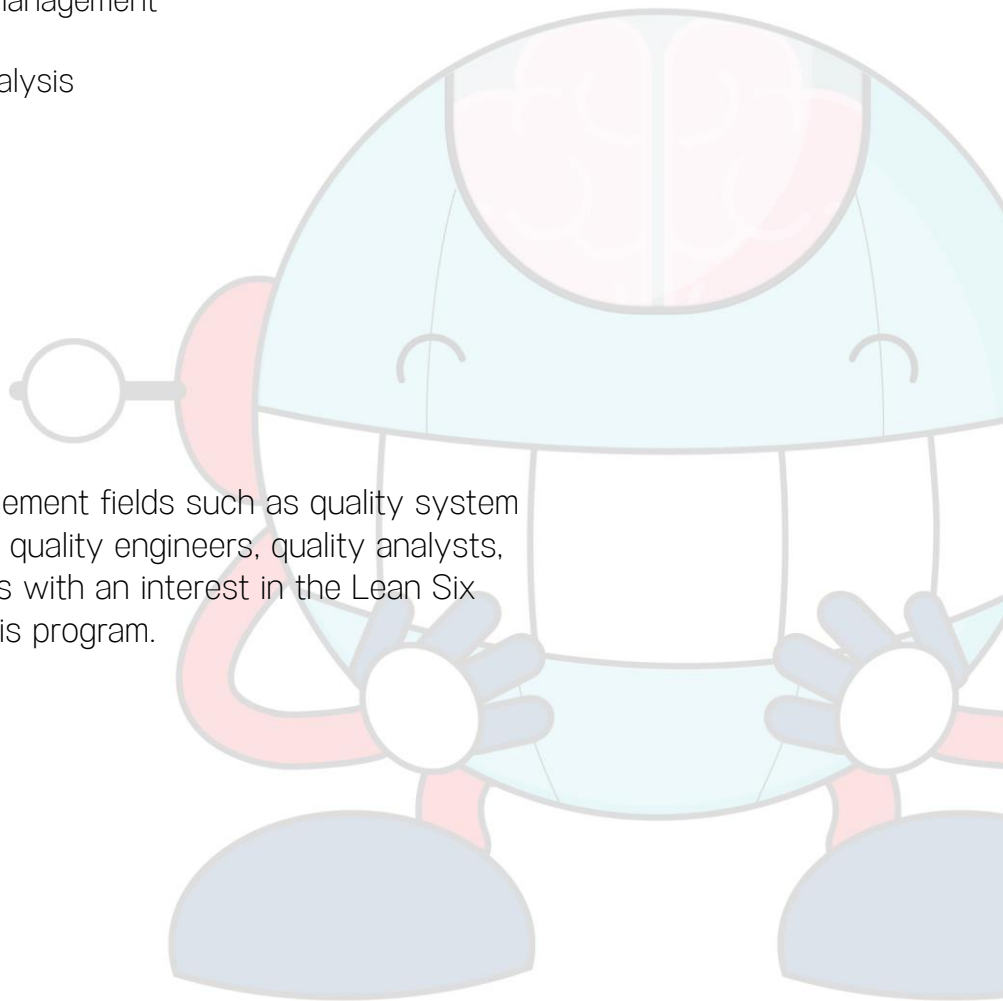
No prerequisites are required to take this course. Anyone with interest can prepare for the IASSC Certified Lean Six Sigma Green Belt exam.

## Skills Covered:

- Lean Six Sigma project management
- Project management
- Measurement system analysis
- Hypothesis testing
- Process analysis
- Process improvement
- DFSS tools

## Who Will Benefit:

Professionals in quality management fields such as quality system managers, quality supervisors, quality engineers, quality analysts, quality auditors, and individuals with an interest in the Lean Six Sigma field will benefit from this program.





## Key Learning Outcomes:

By the end of this certification, the learner will be able to:

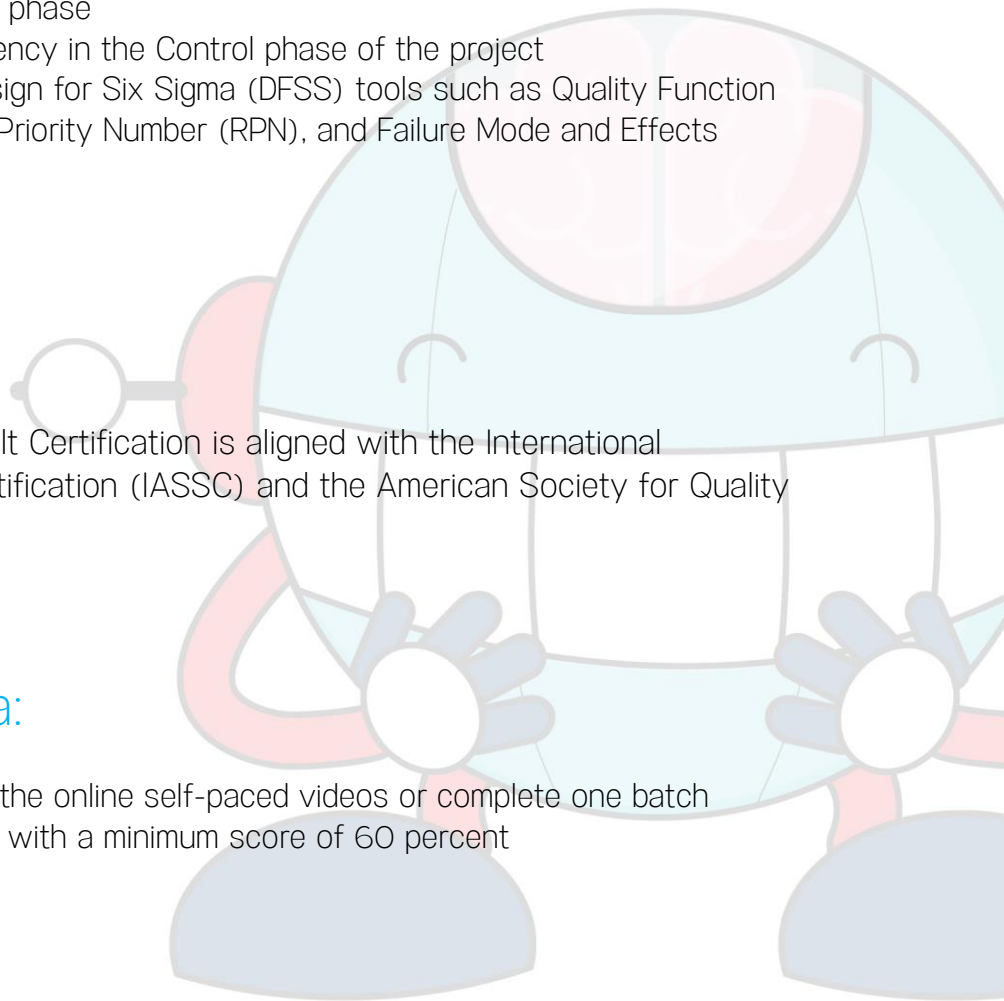
- Lead and implement Lean Six Sigma projects in their organization
- Identify an improvement in the Define phase of the project
- Define how to measure process and product in the Measure phase of the project
- Analyze data and test hypotheses in the Analyze phase of the project
- Identify possible improvement processes and actions based on the performance of variations in the Improve phase
- Increase operating efficiency in the Control phase of the project
- Become an expert in Design for Six Sigma (DFSS) tools such as Quality Function Deployment (QFD), Risk Priority Number (RPN), and Failure Mode and Effects Analysis (FMEA)

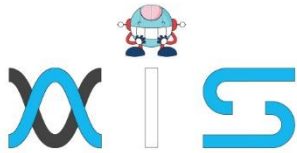
## Accreditations:

This Lean Six Sigma Green Belt Certification is aligned with the International Association for Six Sigma Certification (IASSC) and the American Society for Quality (ASQ).

## Certification Criteria:

- Complete 85 percent of the online self-paced videos or complete one batch
- Pass one simulation test with a minimum score of 60 percent





## AIS

With the rising demand in scalable technology, AIS provides tailored goal-setting based on your organization's needs and expectations. With products geared towards the growing needs of your organization's customers and employees, AIS has innovative and value-driven solutions.

### Learning Partners



#### SAS Management, Inc.

SAS Management, Inc. has been a leader in the training, certification and consulting services industry in the Philippines. With offices in Makati, Ortigas and Cebu, Philippines, the company has been the top training and consulting company for over 9 years. In its years of existence, it has provided certificates to over 100,000 professionals including 10,000 participants in the 160+ courses that have been conducted just during the 2020-2021 pandemic alone. The most sought-after courses being offered are ITIL, Project Management Professional (PMP)®, COBIT 5, Six Sigma Yellow Belt, Six Sigma Green Belt, PRINCE2, and organizational skills, among others.



#### Simplilearn

Simplilearn, based in California and India, is the world's #1 online bootcamp and one of the world's the leading certification and training providers. Simplilearn trained over 2,000,000 professionals with 2,000+ trainers and provides over 400 different courses.

### Technology Partner



#### Freshworks

With over 40,000 customers, Freshworks is a business solutions software provider with products ranging from IT helpdesk and service desk, customer relationship management, live chat, marketing automation, phone system, and HR.

### Partners & Affiliates



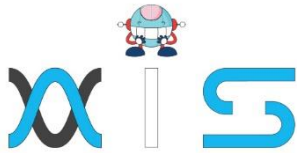
PECB

SDI Service Desk Institute

EC-COUNCIL







*The program presented, as well as a wide range of programs are products of the partnership of AIS, SAS Management, Inc., and Simplilearn. With a common goal of providing the best practice of facilitating learning with an array of choices available in the online platform in this time of digitization.*

## Office Addresses

### AI Services

Juan Antonio III Building  
315 Maysilo Circle, Mandaluyong, Philippines

### SAS Management, Inc.

- **Head Office**

Unit 1602 Cityland 10 Tower  
2 6815 HV dela Costa cor Ayala Avenue  
Makati City, Philippines

- **Branch Office**

Unit 204 Villa Building  
Jupiter St. corner Makati Avenue  
Makati City, Philippines

- **Branch Office**

Room 201 2nd floor OLS Building  
443 Gorordo Avenue., Brgy. Kamputhaw  
Cebu City, Philippines

- **Branch Office**

Malaysia - SAS Management  
Sdn Bhd 6f-16, IOI Business Park,  
Persiaran Puchong Jaya  
47170, Selangor

### Simplilearn

- **Simplilearn Americas, Inc  
Pvt Ltd.**

201 Spear Street, Suite 1100,  
San Francisco, CA 94105 United States

- **Simplilearn Solutions  
Pte Ltd.**

NALANDA 53/1 C, Manoj Arcade, 24th Main Rd,  
Sector 2, HSR Layout, Bengaluru  
560102, Karnataka, India.

- **Simplilearn Singapore**

#14-302, The Plaza, 7500A Beach Rd,  
Singapore 199591