

LEAN SIX SIGMA EXPERT

Course Outline





Course Overview:

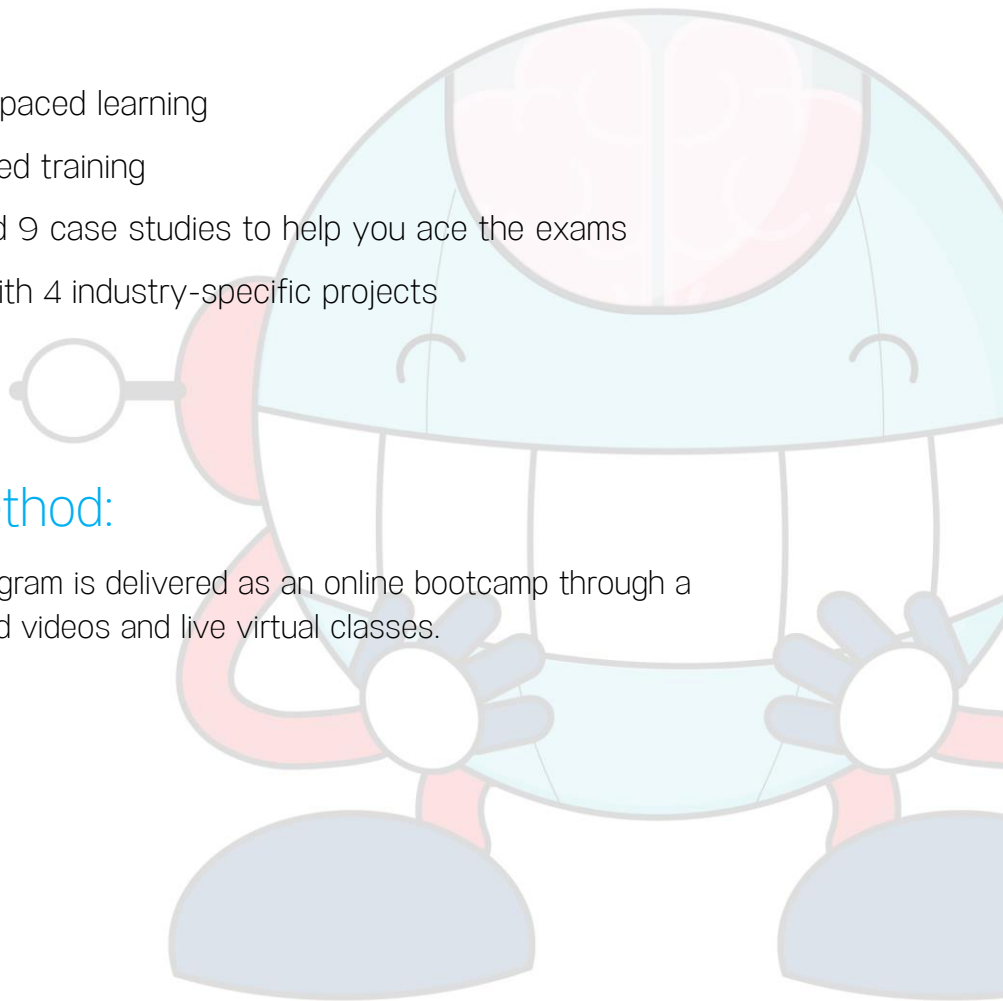
This Lean Six Sigma Expert Master's Program helps learners master two important quality management methodologies—Lean and Six Sigma—that together can accelerate business improvement. This program helps learners gain the skills that are coveted by businesses for quality management professionals.

Course Highlights

- 28 hours of online self-paced learning
- 112 hours of instructor-led training
- 10 simulation exams and 9 case studies to help you ace the exams
- Hands-on knowledge with 4 industry-specific projects
- Earn 70+ PDUs

Course Delivery Method:

This Lean Six Sigma Expert Program is delivered as an online bootcamp through a combination of online self-paced videos and live virtual classes.





Skills Covered:

- Lean Six Sigma
- Quality management
- Lean management
- Process improvement
- Minitab
- DMAIC methodology

Tools Covered

Minitab

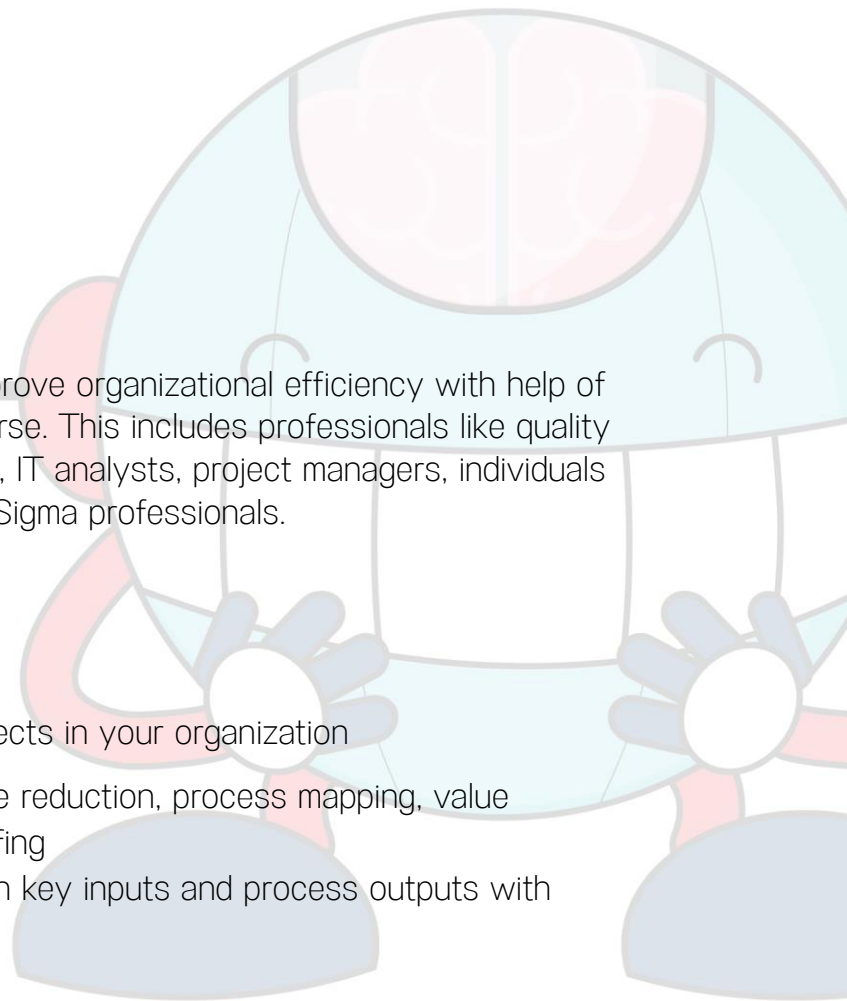
Who Will Benefit

Professionals looking to learn how to improve organizational efficiency with help of Lean Six Sigma should enroll for this course. This includes professionals like quality control supervisors/engineers/managers, IT analysts, project managers, individuals interested in Lean management, and Six Sigma professionals.

Key Learning Outcomes

Lead and implement Lean Six Sigma projects in your organization

- Learn lean concepts like 5S, waste reduction, process mapping, value stream mapping, and mistake proofing
- Determine the relationship between key inputs and process outputs with the help of statistical analysis

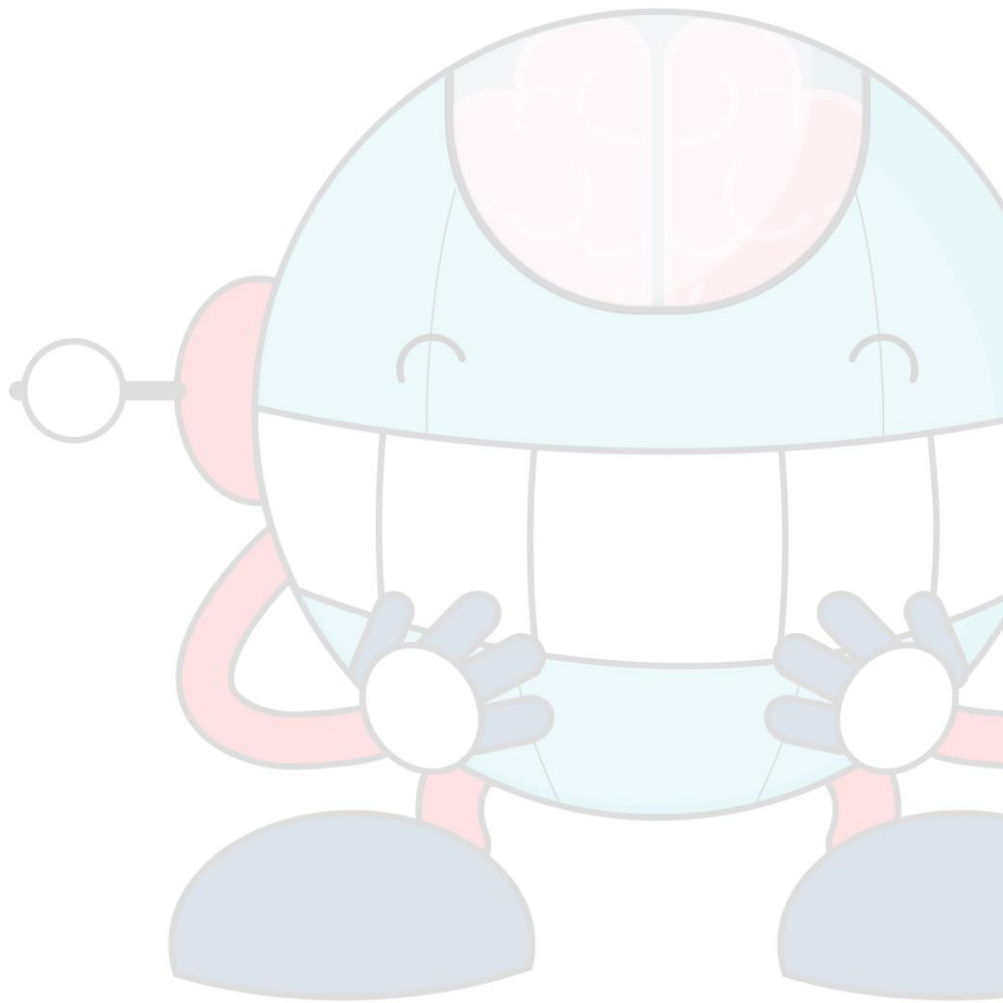


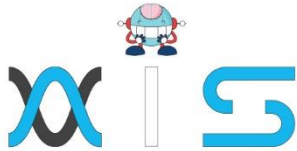


- Use Minitab to process key statistical data operations
- Export data to various MS Office applications

Certification Criteria

To unlock the Lean Six Sigma Expert certificate, learners need to pass all the courses in the learning path.





AIS

With the rising demand in scalable technology, AIS provides tailored goal-setting based on your organization's needs and expectations. With products geared towards the growing needs of your organization's customers and employees, AIS has innovative and value-driven solutions.

Learning Partners



SAS Management, Inc.

SAS Management, Inc. has been a leader in the training, certification and consulting services industry in the Philippines. With offices in Makati, Ortigas and Cebu, Philippines, the company has been the top training and consulting company for over 9 years. In its years of existence, it has provided certificates to over 100,000 professionals including 10,000 participants in the 160+ courses that have been conducted just during the 2020-2021 pandemic alone. The most sought-after courses being offered are ITIL, Project Management Professional (PMP)®, COBIT 5, Six Sigma Yellow Belt, Six Sigma Green Belt, PRINCE2, and organizational skills, among others.



Simplilearn

Simplilearn, based in California and India, is the world's #1 online bootcamp and one of the world's the leading certification and training providers. Simplilearn trained over 2,000,000 professionals with 2,000+ trainers and provides over 400 different courses.

Technology Partner



Freshworks

With over 40,000 customers, Freshworks is a business solutions software provider with products ranging from IT helpdesk and service desk, customer relationship management, live chat, marketing automation, phone system, and HR.

Partners & Affiliates

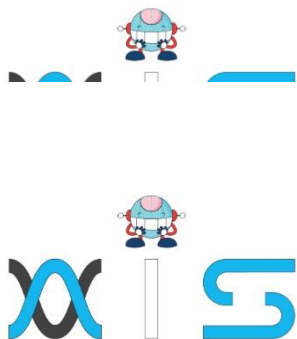


PECB

SDI Service Desk Institute

EC-COUNCIL





The program presented, as well as a wide range of programs are products of the partnership of AIS, SAS Management, Inc., and Simplilearn. With a common goal of providing the best practice of facilitating learning with an array of choices available in the online platform in this time of digitization.

Office Addresses

AI Services

Juan Antonio III Building
315 Maysilo Circle, Mandaluyong, Philippines

SAS Management, Inc.

- **Head Office**

Unit 1602 Cityland 10 Tower
2 6815 HV dela Costa cor Ayala Avenue
Makati City, Philippines

- **Branch Office**

Unit 204 Villa Building
Jupiter St. corner Makati Avenue
Makati City, Philippines

- **Branch Office**

Room 201 2nd floor OLS Building
443 Gorordo Avenue., Brgy. Kamputhaw
Cebu City, Philippines

- **Branch Office**

Malaysia - SAS Management
Sdn Bhd 6f-16, IOI Business Park,
Persiaran Puchong Jaya
47170, Selangor

Simplilearn

- **Simplilearn Americas, Inc
Pvt Ltd.**

201 Spear Street, Suite 1100,
San Francisco, CA 94105 United States

- **Simplilearn Solutions
Pte Ltd.**

NALANDA 53/1 C, Manoj Arcade, 24th Main Rd,
Sector 2, HSR Layout, Bengaluru
560102, Karnataka, India.

- **Simplilearn Singapore**

#14-302, The Plaza, 7500A Beach Rd,
Singapore 199591