

LEAN MANAGEMENT CERTIFICATION COURSE

Course Outline





Course Overview:

Drive the best value for your business and streamline processes with the help of this Lean Management course. Learn about how to implement industry best practices and optimize processes. This Lean Management Certification will help you learn the principles of lean management and is ideal for professionals seeking to be quality management professionals.

Course Highlights:

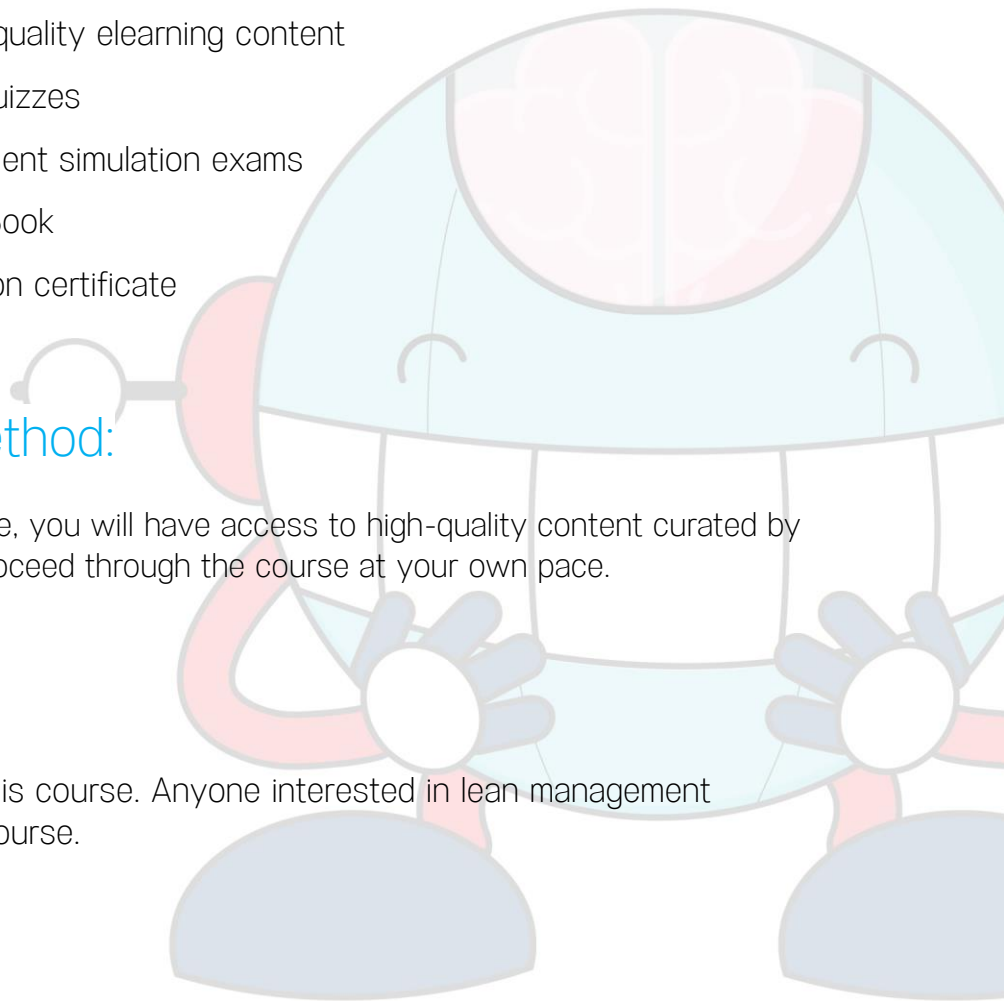
- 5 hours of high-quality elearning content
- 9 chapter-end quizzes
- 3 Lean management simulation exams
- Downloadable eBook
- Course completion certificate

Course Delivery Method:

Online self-learning: In this mode, you will have access to high-quality content curated by industry experts so you can proceed through the course at your own pace.

Prerequisites:

There is no prerequisite for this course. Anyone interested in lean management processes can enroll in this course.





Skills Covered:

- Lean management
- Just In Time management
- Waste management
- Lean in manufacturing
- Lean Maturity Matrix
- Theory of constraints

Tools Covered:

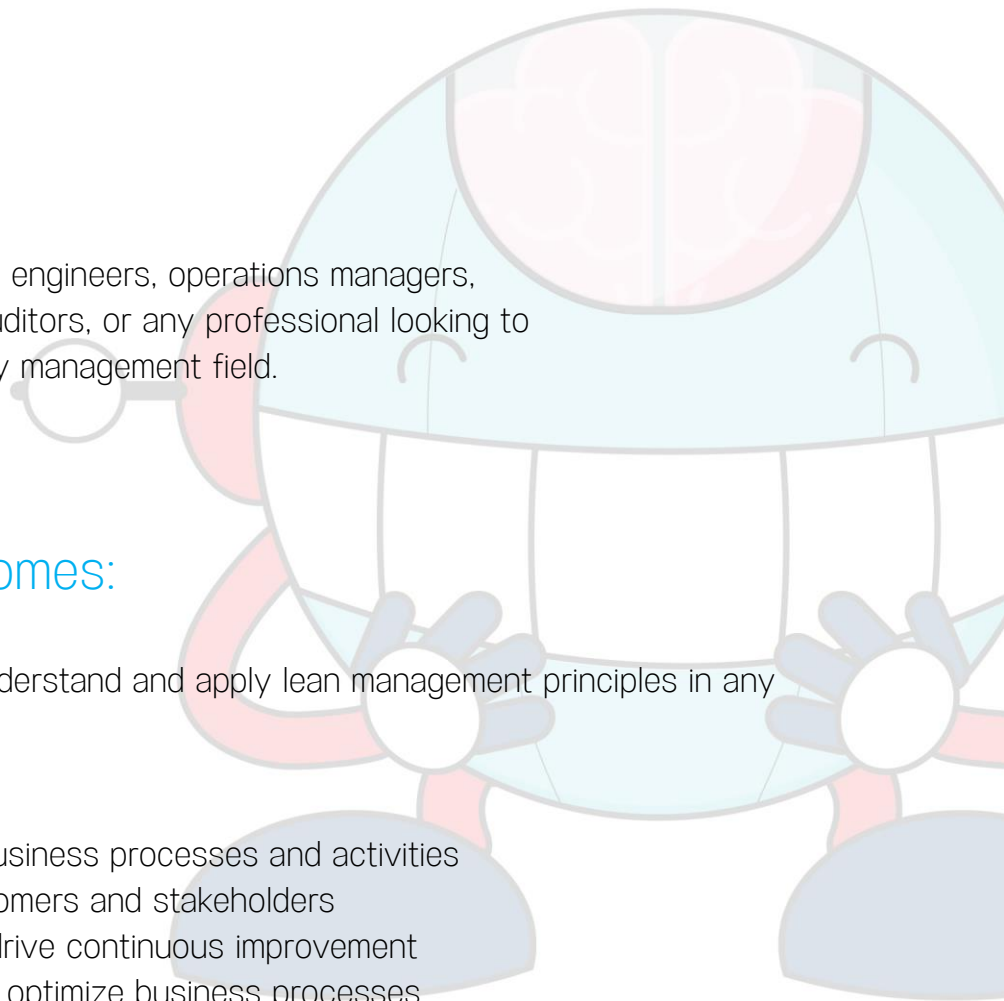
Who Will Benefit

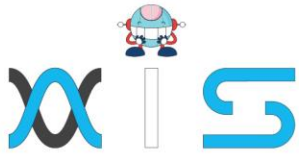
This course is ideal for quality engineers, operations managers, quality analysts and quality auditors, or any professional looking to grow their career in the quality management field.

Key Learning Outcomes:

This course helps learners understand and apply lean management principles in any project to:

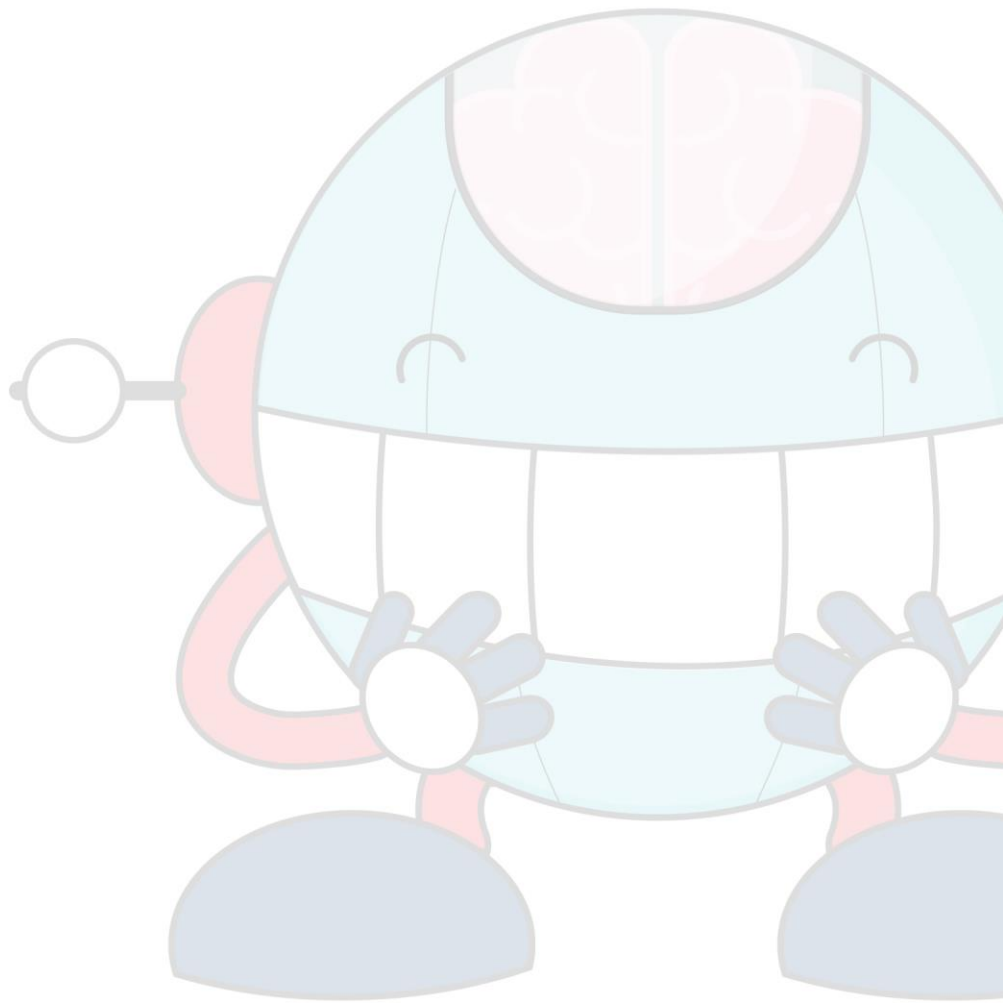
- Improve efficiency of business processes and activities
- Increase value for customers and stakeholders
- Implement changes to drive continuous improvement
- Learn best practices to optimize business processes

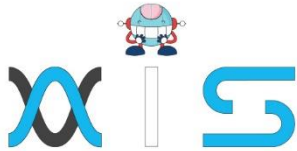




Certification Criteria:

- Learners need to complete 85 percent of the OSL course.
- One simulation test with a minimum score of 60 percent.





AIS

With the rising demand in scalable technology, AIS provides tailored goal-setting based on your organization's needs and expectations. With products geared towards the growing needs of your organization's customers and employees, AIS has innovative and value-driven solutions.

Learning Partners



SAS Management, Inc.

SAS Management, Inc. has been a leader in the training, certification and consulting services industry in the Philippines. With offices in Makati, Ortigas and Cebu, Philippines, the company has been the top training and consulting company for over 9 years. In its years of existence, it has provided certificates to over 100,000 professionals including 10,000 participants in the 160+ courses that have been conducted just during the 2020-2021 pandemic alone. The most sought-after courses being offered are ITIL, Project Management Professional (PMP)®, COBIT 5, Six Sigma Yellow Belt, Six Sigma Green Belt, PRINCE2, and organizational skills, among others.



Simplilearn

Simplilearn, based in California and India, is the world's #1 online bootcamp and one of the world's the leading certification and training providers. Simplilearn trained over 2,000,000 professionals with 2,000+ trainers and provides over 400 different courses.

Technology Partner



Freshworks

With over 40,000 customers, Freshworks is a business solutions software provider with products ranging from IT helpdesk and service desk, customer relationship management, live chat, marketing automation, phone system, and HR.

Partners & Affiliates

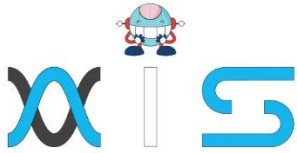


PECB

SDI Service Desk Institute

EC-COUNCIL





The program presented, as well as a wide range of programs are products of the partnership of AIS, SAS Management, Inc., and Simplilearn. With a common goal of providing the best practice of facilitating learning with an array of choices available in the online platform in this time of digitization.

Office Addresses

NXT AIS Inc.

Juan Antonio III Building
315 Maysilo Circle, Mandaluyong, Philippines

SAS Management, Inc.

- **Head Office**

Unit 1602 Cityland 10 Tower
2 6815 HV dela Costa cor Ayala Avenue
Makati City, Philippines

- **Branch Office**

Unit 204 Villa Building
Jupiter St. corner Makati Avenue
Makati City, Philippines

- **Branch Office**

Room 201 2nd floor OLS Building
443 Gorordo Avenue., Brgy. Kamputhaw
Cebu City, Philippines

- **Branch Office**

Malaysia - SAS Management
Sdn Bhd 6f-16, IOI Business Park,
Persiaran Puchong Jaya
47170, Selangor

Simplilearn

- **Simplilearn Americas, Inc
Pvt Ltd.**

201 Spear Street, Suite 1100,
San Francisco, CA 94105 United States

- **Simplilearn Solutions
Pte Ltd.**

NALANDA 53/1 C, Manoj Arcade, 24th Main Rd,
Sector 2, HSR Layout, Bengaluru
560102, Karnataka, India.

- **Simplilearn Singapore**

#14-302, The Plaza, 7500A Beach Rd,
Singapore 199591