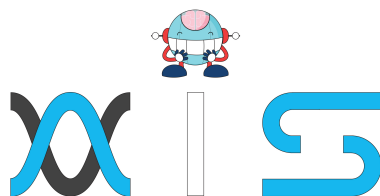




Java Certification Training

simplilearn



 **SPARTAN**
Allied Services
Deliver Results - Create Value



Table of Contents:

- > Program Overview
- > Program Features
- > Delivery Mode
- > Prerequisites
- > Target Audience
- > Key Learning Outcomes
- > Certification Details and Criteria
- > Course Curriculum
- > Course End Projects
- > Customer Reviews
- > About Us

Program Overview:

This advanced Java Certification Training course is designed to guide you through the concepts of Java, from introductory techniques to advanced programming skills. The course provides you with the knowledge of Core Java 8, operators, arrays, loops, methods, and constructors while giving you hands-on experience in JDBC and JUnit framework.

Program Features:

- > 70 hours of blended learning
- > 18 hours of Online self-paced learning
- > 52 hours of instructor-led training
- > Hands-on coding and implementation of two web-based projects
- > Includes Hibernate and Spring frameworks
- > 35 coding-related exercises on Core Java 8

Delivery Mode:

Blended - Online self-paced learning and live virtual classroom

Prerequisites:

Prior knowledge of Core Java is necessary for anyone who wants to take this advanced course. Our Core Java online self-paced course is available for free to help you become familiar with the basics of Java programming.



Target Audience:

- > Software developers
- > Web designers
- > Programming enthusiasts
- > Engineering graduates
- > Students or professionals who wish to become Java developers

Key Learning Outcomes:

By the end of this Java online training course, you will be able to:

- > Understand basic Core Java 8 concepts
- > Implement multi-threading, string handling, and exception handling techniques
- > Set up connections using JDBC to communicate with a database
- > Understand servlet fundamentals such as J2EE, HTTP Protocol, and HTML in detail
- > Create a JSP by following directives and run an application
- > Learn Hibernate Query Language (HQL) and its exciting features
- > Map relationships with Hibernate
- > Learn how to configure AOP in a Java application
- > Dive deeply into SOA architecture
- > Design a SOAP-based web service

Certification Details and Criteria:

Online Classroom:

- > Attend one complete batch
- > Complete one simulation test with a minimum score of 60 percent

Online Self-Learning:

- > Complete 85 percent of the course
- > Complete one simulation test with a minimum score of 60 percent



Course Curriculum:

Lesson 01 - Introduction to Java EE

- > Introduction to Java EE

Lesson 02 - Java Servlet I

- > Servlets API, Interfaces, and Methods
- > Servlet Lifecycle
- > Configure and Deploy Servlet
- > ServletRequest, ServletResponse
- > ServletConfig, ServletContext
- > Servlet Scopes, Attributes, and Collaboration

Lesson 03 - Java Servlet II

- > Session Management
- > Listeners in Java EE
- > Filters in Java EE

Lesson 04 - Java Server Pages

- > JSP Lifecycle
- > Creating and Working with JSP Elements
- > Working with JSP Standard Action
- > JSTL and Custom Tag Libraries

Lesson 05 - Introduction to Hibernate

- > Introduction to Hibernate
- > Hibernate CRUD Operation

Lesson 06 - Hibernate Queries and Relationship

- > Hibernate Queries and Relationship
- > Mapping Relationship with Hibernate

Lesson 07 - Introduction to Spring

- > Introduction to Spring
- > Dependency Injection, SpringBean Lifecycle, Wiring, and Scope



Lesson 08 - Spring AOP

- › Introduction to Spring AOP (Aspect-Oriented Programming)
- › Configuring AOP in Java Application using AspectJ Approach

Lesson 09 - Spring JDBC and Spring Hibernate

- › Spring JDBC Implementation in an Application
- › Spring Hibernate Template
- › Spring JDBC Transaction Management

Lesson 10 - Spring MVC

- › Spring MVC Architecture, Components, and Framework
- › Spring MVC Program

Lesson 11 - SOA and Web Services

- › Basics of SOA Architecture and Web Services
- › Creating SOAP-based and RESTful Web Services

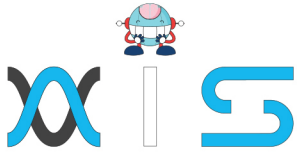
Course End **Projects:**

Project 1: Employee Management System

Create a new system to automate the regulation, creation, and closure process.

Project 2: Home Insurance

Build a system that helps individuals buy home insurance through a web application.



AIS

With the rising demand in scalable technology, AIS provides tailored goal-setting based on your organization's needs and expectations. With products geared towards the growing needs of your organization's customers and employees, AIS has innovative and value-driven solutions.

Learning Partners



SAS Management, Inc.

Premiere training and consulting services company, SAS Management, Inc. has been in the industry for a decade. SAS Management, inc. focuses on creating value in every learning and consulting experience by providing the best possible output – whether in a virtual classroom setup, e-learning, or face-to-face. SAS Management, Inc. is the leading training and certification provider for ITIL, Project Management Professional, ISO certifications, PRINCE2, SDI Service Desk Analyst and Manager, Agile, and a host of many programs and courses.



Simplilearn

Tagged as the “World's #1 Online Bootcamp”, Simplilearn provides online education and in-house training for professional certification courses. Founded in 2010, Simplilearn offers more than 100 programs, helping professionals reach their learning potentials needed to work in the digital economy.

Technology Partner



Freshworks

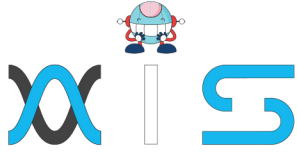
With over 40,000 customers, Freshworks is a business solutions software provider with products ranging from IT helpdesk and service desk, customer relationship management, live chat, marketing automation, phone system, and HR.

Partners & Affiliates



PECB **SDI** **Service Desk Institute** **EC-COUNCIL**





The program presented, as well as a wide range of programs are products of the partnership of AIS, SAS Management, Inc., and Simplilearn. With a common goal of providing the best practice of facilitating learning with an array of choices available in the online platform in this time of digitization.

Office Addresses

AI Services

Juan Antonio III Building
315 Maysilo Circle, Mandaluyong, Philippines

SAS Management, Inc.

- **Head Office**

Unit 1602 Cityland 10 Tower
2 6815 HV dela Costa cor Ayala Avenue
Makati City, Philippines

- **Branch Office**

Unit 204 Villa Building
Jupiter St. corner Makati Avenue
Makati City, Philippines

- **Branch Office**

Room 201 2nd floor OLS Building
443 Gorordo Avenue., Brgy. Kamputhaw
Cebu City, Philippines

- **Branch Office**

Malaysia - SAS Management
Sdn Bhd 6f-16, IOI Business Park,
Persiaran Puchong Jaya
47170, Selangor

Simplilearn

- **Simplilearn Americas, Inc
Pvt Ltd.**

201 Spear Street, Suite 1100,
San Francisco, CA 94105 United States

- **Simplilearn Solutions
Pte Ltd.**

NALANDA 53/1 C, Manoj Arcade, 24th Main Rd,
Sector 2, HSR Layout, Bengaluru
560102, Karnataka, India.

- **Simplilearn Singapore**

#14-302, The Plaza, 7500A Beach Rd,
Singapore 199591