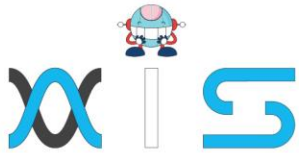


INTRODUCTION TO ROBOTIC PROCESS AUTOMATION COURSE

Course Outline





Program Overview:

The Introduction to RPA training course gives learners a glimpse into the bright and exciting future of Robotic Process Automation. This course gives you an overview of the fundamental methodologies and tools that will help you employ RPA concepts on the job. You'll learn the key RPA tools and workflows used in intelligent automation.

Program Features:

- Two hours of self-paced videos
- Lifetime access to self-paced learning
- Industry-recognized course completion certificate

Delivery Mode:

Online self-learning

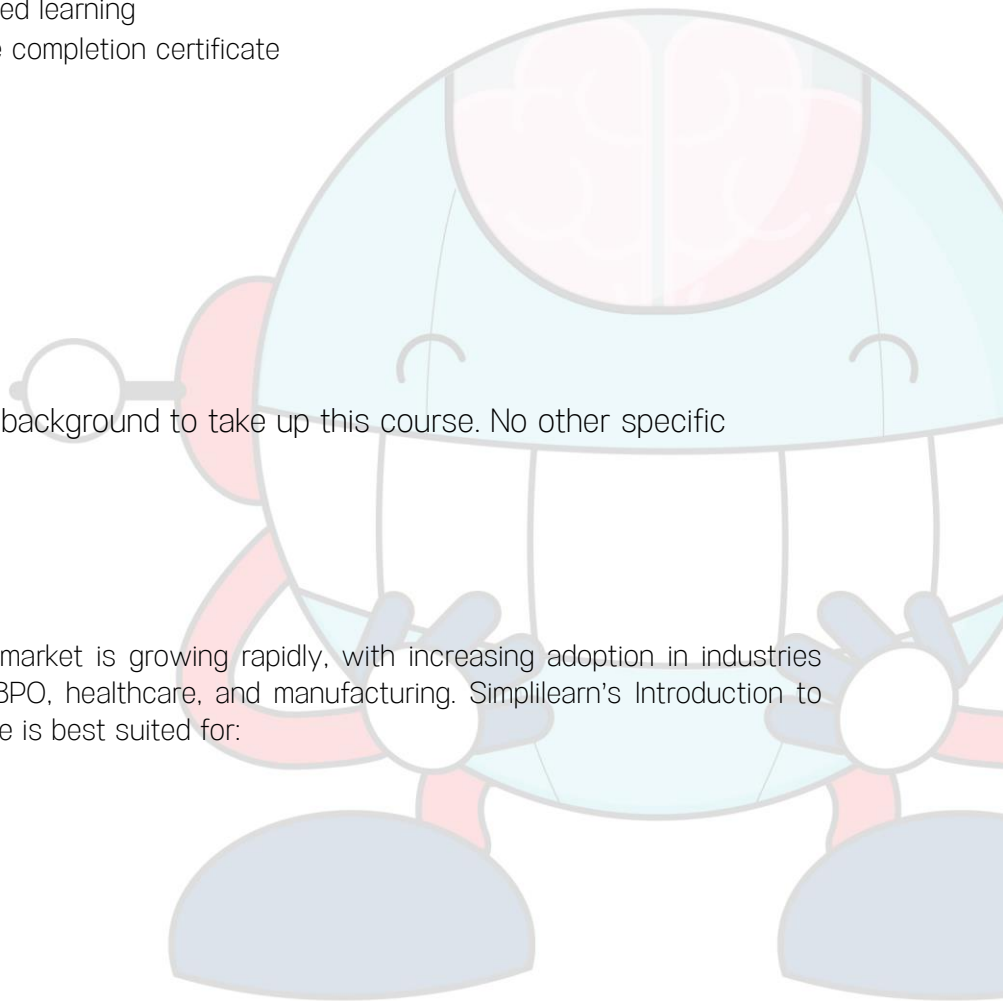
Prerequisites:

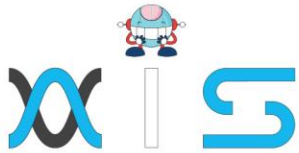
You should be from a technical background to take up this course. No other specific prerequisite is required.

Target Audience:

The Robotic Process Automation market is growing rapidly, with increasing adoption in industries such as BFSI, retail, telecom, IT, BPO, healthcare, and manufacturing. Simplilearn's Introduction to Robotic Process Automation course is best suited for:

- CXOs
- Team Leads
- Business Analysts
- Solution Architects





Key Learning Outcomes:

When you complete this Introduction to RPA course, you will be able to accomplish the following:

- Learn about RPA and its business applications.
- Understand the impact that RPA creates with significant ROI
- Learn about various tools available in the market and their right fit
- Gain knowledge on the organization and management of a real-life workflow automation project

Certification Details and Criteria:

- Complete the online self-learning course
- Complete the course-end assessment with a minimum 80% score

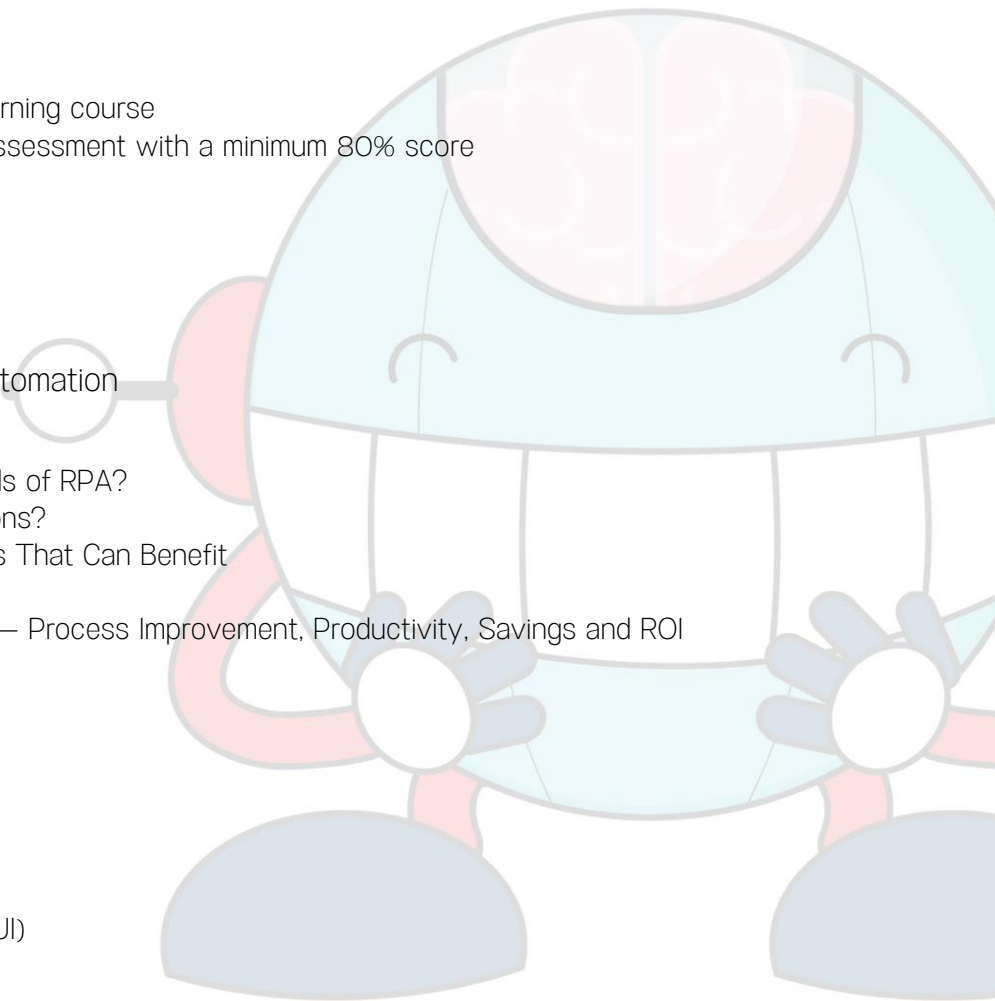
Course Curriculum:

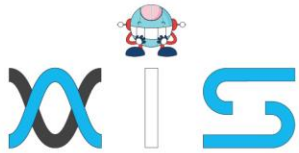
Lesson 01 - Robotic Process Automation

- What is RPA?
- What Are the Growth Trends of RPA?
- How Can it Help Organizations?
- Industries and Organizations That Can Benefit
- Software Robot Types
- RPA Cost-Benefit Analysis — Process Improvement, Productivity, Savings and ROI
- Evolution of RPA

Lesson 02 - How RPA Works

- How Does RPA Work?
- Programming
- Graphical User Interface (GUI)
- Recorder
- Self-learning Bots
- Possible Activities of Self-Learning Bots
- Types of RPA - Attended, Unattended, Hybrid





Lesson 03 - ROI: Building a Business Case

- ROI for RPA
- Velocity
- Productivity

Lesson 04 - RPA Implementation in Enterprise

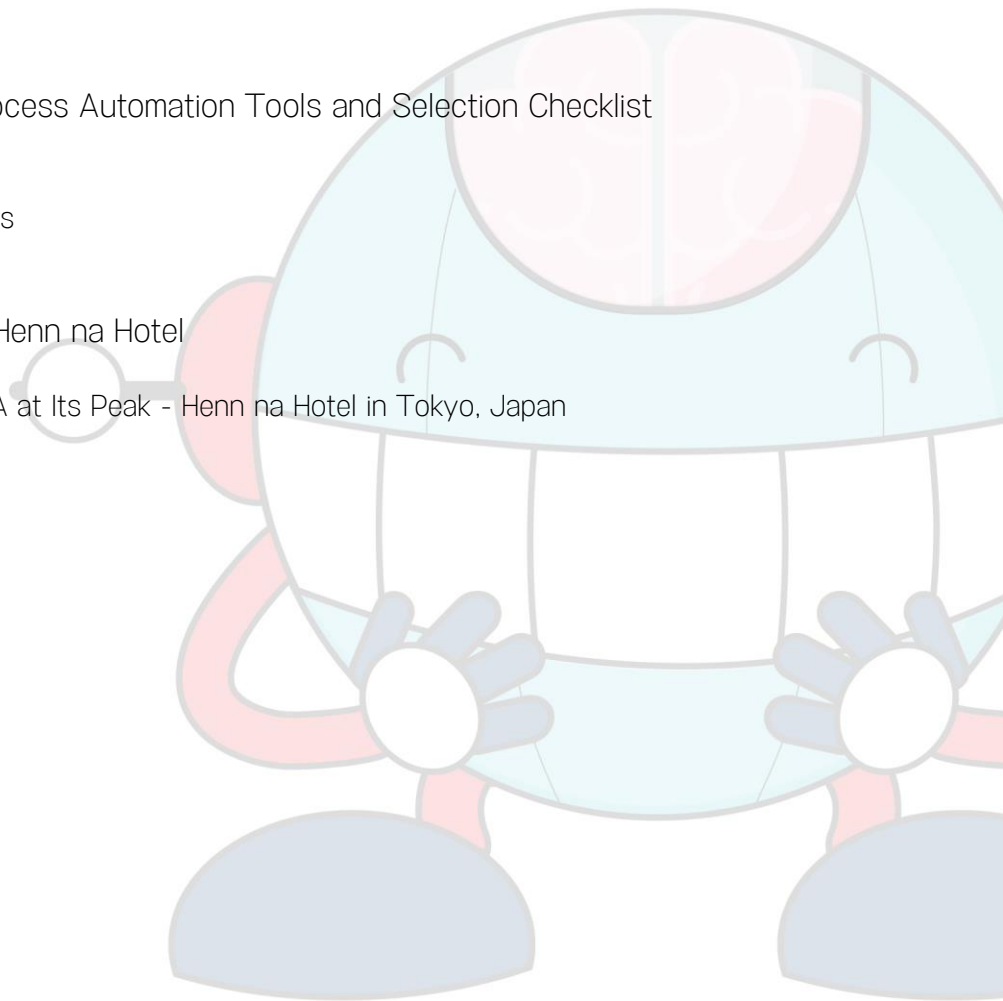
- Key Drivers of RPA in Enterprise
- Steps to Enterprise RPA

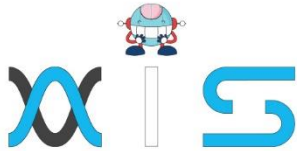
Lesson 05 - List of Robotic Process Automation Tools and Selection Checklist

- Comparing RPA Tools
- Understanding RPA Vendors

Lesson 06 - RPA Case Study: Henn na Hotel

- Practical Application of RPA at Its Peak - Henn na Hotel in Tokyo, Japan





AIS

With the rising demand in scalable technology, AIS provides tailored goal-setting based on your organization's needs and expectations. With products geared towards the growing needs of your organization's customers and employees, AIS has innovative and value-driven solutions.

Learning Partners



SAS Management, Inc.

SAS Management, Inc. has been a leader in the training, certification and consulting services industry in the Philippines. With offices in Makati, Ortigas and Cebu, Philippines, the company has been the top training and consulting company for over 9 years. In its years of existence, it has provided certificates to over 100,000 professionals including 10,000 participants in the 160+ courses that have been conducted just during the 2020-2021 pandemic alone. The most sought-after courses being offered are ITIL, Project Management Professional (PMP)®, COBIT 5, Six Sigma Yellow Belt, Six Sigma Green Belt, PRINCE2, and organizational skills, among others.



Simplilearn

Simplilearn, based in California and India, is the world's #1 online bootcamp and one of the world's the leading certification and training providers. Simplilearn trained over 2,000,000 professionals with 2,000+ trainers and provides over 400 different courses.

Technology Partner

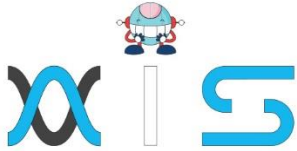


Freshworks

With over 40,000 customers, Freshworks is a business solutions software provider with products ranging from IT helpdesk and service desk, customer relationship management, live chat, marketing automation, phone system, and HR.

Partners & Affiliates





The program presented, as well as a wide range of programs are products of the partnership of AIS, SAS Management, Inc., and Simplilearn. With a common goal of providing the best practice of facilitating learning with an array of choices available in the online platform in this time of digitization.

Office Addresses

NXT AIS Inc.

Juan Antonio III Building
315 Maysilo Circle, Mandaluyong, Philippines

SAS Management, Inc.

- **Head Office**

Unit 1602 Cityland 10 Tower
2 6815 HV dela Costa cor Ayala Avenue
Makati City, Philippines

- **Branch Office**

Unit 204 Villa Building
Jupiter St. corner Makati Avenue
Makati City, Philippines

- **Branch Office**

Room 201 2nd floor OLS Building
443 Gorordo Avenue., Brgy. Kamputhaw
Cebu City, Philippines

- **Branch Office**

Malaysia - SAS Management
Sdn Bhd 6f-16, IOI Business Park,
Persiaran Puchong Jaya
47170, Selangor

Simplilearn

- **Simplilearn Americas, Inc Pvt Ltd.**

201 Spear Street, Suite 1100,
San Francisco, CA 94105 United States

- **Simplilearn Solutions Pte Ltd.**

NALANDA 53/1 C, Manoj Arcade, 24th Main Rd,
Sector 2, HSR Layout, Bengaluru
560102, Karnataka, India.

- **Simplilearn Singapore**

#14-302, The Plaza, 7500A Beach Rd,
Singapore 199591