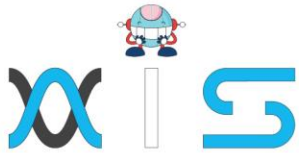


# INTERNET OF THINGS (IOT)

## Course Outline

**IOT** INTERNET OF  
THINGS



## Program Overview:

If you're new to the Internet of Things (IoT) and want to leverage it across business functions, then this introductory course is for you. You'll get a glimpse into the evergrowing field of IoT, a technology that allows the intelligent exchange of data among a network of internet-connected objects.

## Program Features:

- 2 hours of online self-paced learning
- Lifetime access to self-paced learning Industry-recognized course completion certificate
- Comprehensive industry-relevant use cases and case studies
- 9 comprehensive use cases and 7 real-time case studies

## Delivery Mode:

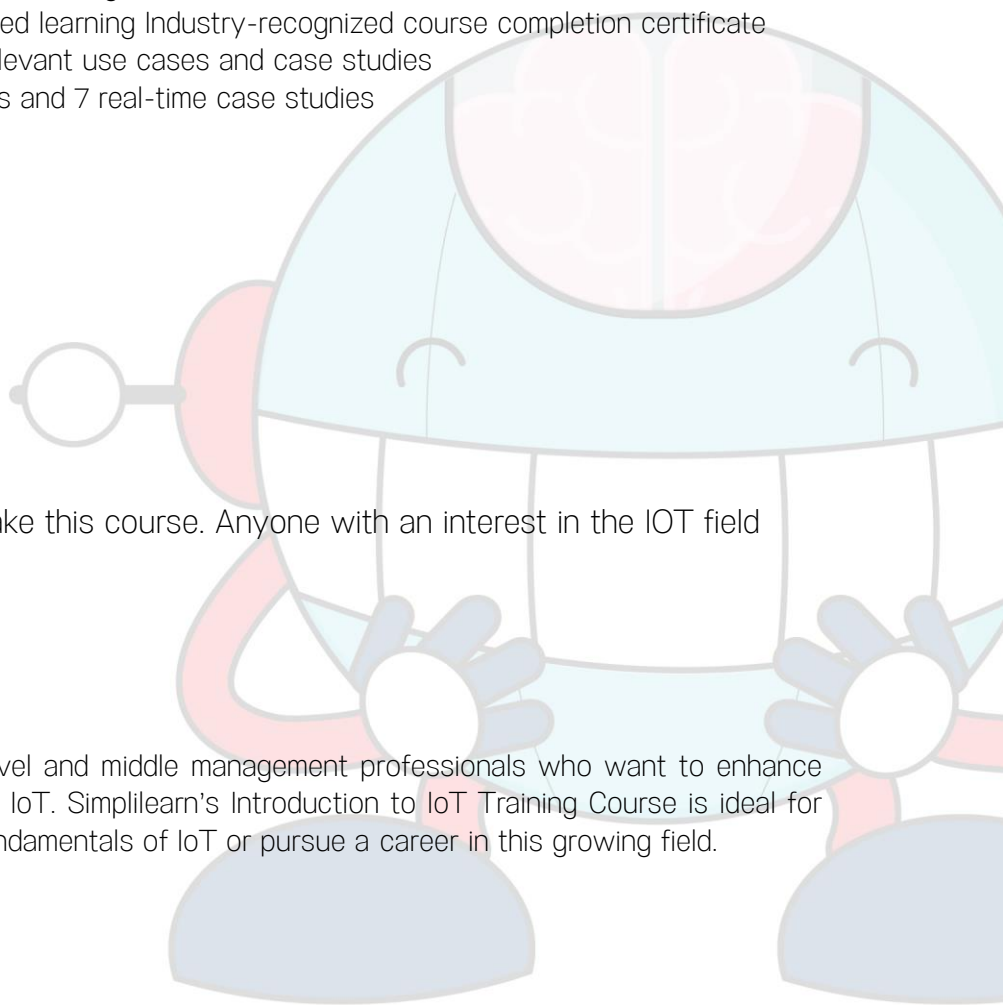
Online self-learning

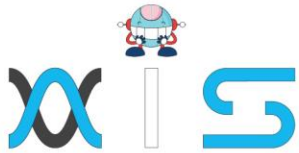
## Prerequisites:

There are no prerequisites to take this course. Anyone with an interest in the IOT field may take this course

## Target Audience:

This IoT course caters to CXO level and middle management professionals who want to enhance business value and ROI leveraging IoT. Simplilearn's Introduction to IoT Training Course is ideal for anyone who wants to learn the fundamentals of IoT or pursue a career in this growing field.





## Key Learning Outcomes:

By the end of this online Introduction to IOT training course, you will be able to:

- An overview of IoT, including its origin and impact
- Building blocks of IoT, how they are connected and how they communicate with each other
- IoT design and development considerations, frameworks and architectures
- Security considerations, including common IoT security breaches and solutions
- Real-world industry-relevant business opportunities with IoT
- How organizations can adopt and benefit from IoT

## Certification Details & Criteria::

- Complete the online self-learning course
- Complete the course-end assessment with a minimum 80% score

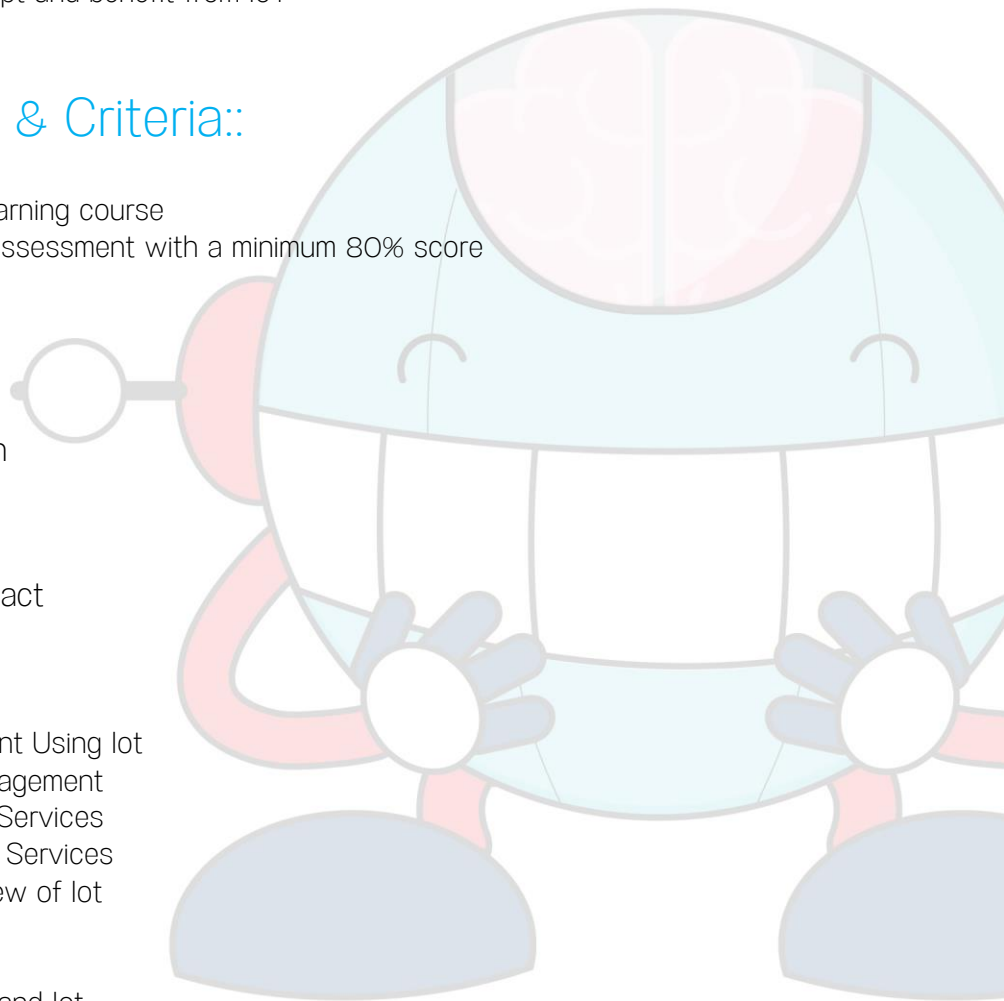
## Course Curriculum:

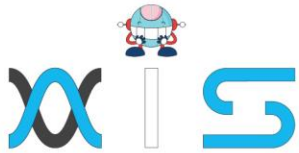
### Lesson 01 - Course Introduction

- Course Introduction

### Lesson 02 - IOT Origin and Impact

- IOT Origin and Impact
- IoT Revolution in Industries
- Use Case: Fleet Management Using IoT
- Benefits of IoT in Fleet Management
- Use Case: IoT for Financial Services
- Benefits of IoT for Financial Services
- IoT in Dairy Farming Overview of IoT
- Evolution of IoT
- Transforming Digital World
- Differences Between M2m and IoT
- Use Case: M2m vs IoT





- Use Case: lot in Autonomous Vehicles
- Key Takeaways

### Lesson 03 - Building Blocks of IoT

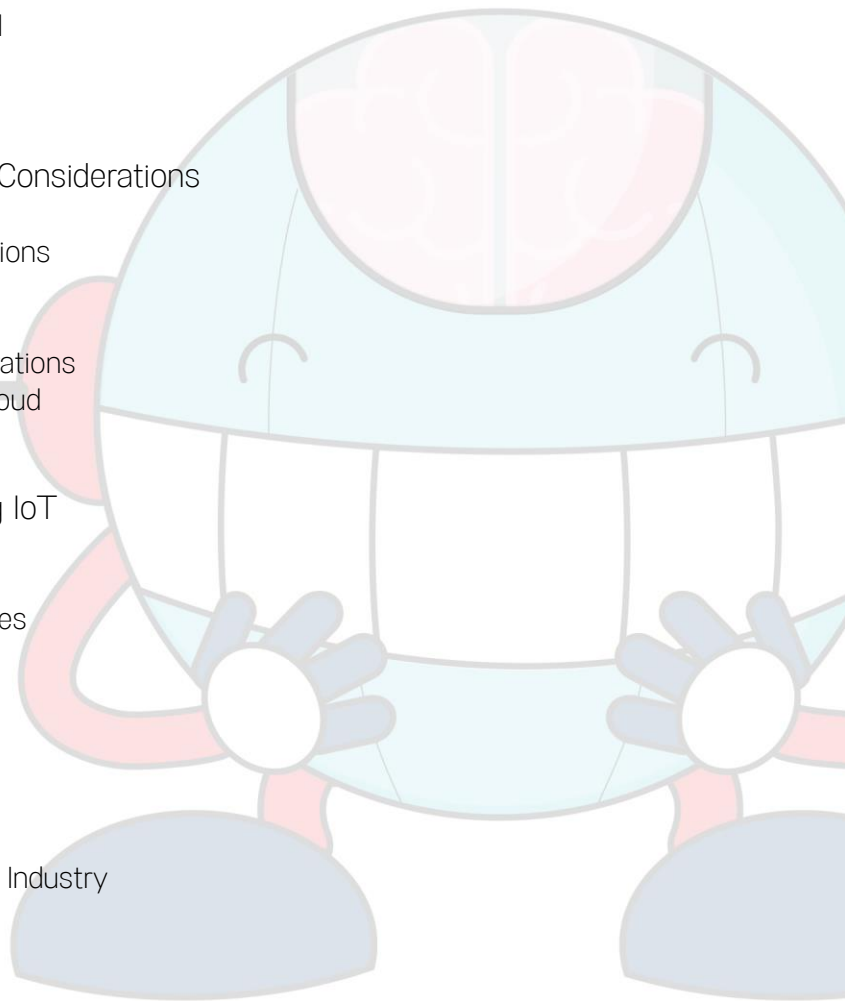
- Building Blocks of lot
- Hardware for lot
- Connectivity Blocks and Communication Protocols
- Platforms Supporting lot
- Cloud Computing for lot
- Data Management for lot
- Mobile Applications for lot
- Use Case: Lora Communication Protocol
- Use Case: Smart Home Using Arduino
- Key Takeaways

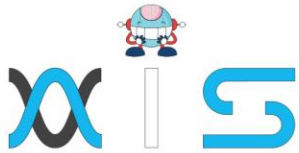
### Lesson 04 - IoT Design and Development Considerations

- IoT Design and Development Considerations
- lot Device Architecture
- lot Reference Architecture
- lot Standardization and Design Considerations
- lot Device Architecture: Network and Cloud
- lot in Smart Farming Key Takeaways

### Lesson 05 - Security Considerations Using IoT

- Security Considerations Using IoT
- lot Security Standards and Best Practices
- lot Attack and Vulnerabilities
- lot Hardware Solutions
- lot Software Solutions
- lot's Open Source Solutions
- lot Use Case: Utility Companies
- lot Security in Utilities Challenges
- Use Case: lot Security in Manufacturing Industry
- Key Takeaways



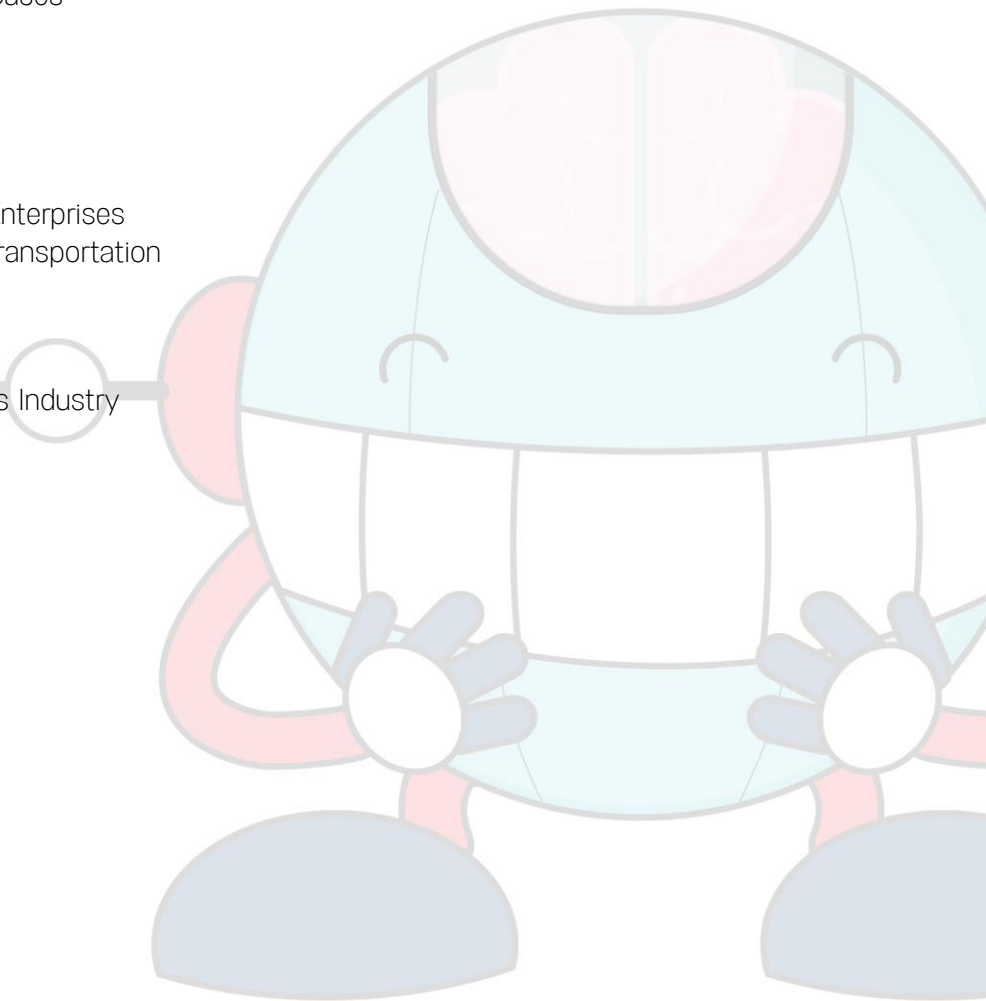


## Lesson 06 - Opportunities with IoT

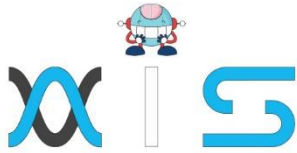
- Opportunities with IoT
- Data Analytics With IoT in Business
- Data Analytics With IoT: Business Efficiency
- Industry and IoT
- Use Case: Industry -predictive Maintenance
- Internet of Everything: Overview
- Internet of Everything: Introduction
- Internet of Everything: Use Cases
- Social IoT
- Key Takeaways

## Lesson 07 - IoT in Enterprise

- IoT Decision Framework for Enterprises
- Case Study: Logistics and Transportation
- Case Study- Manufacturing
- Case Study- Chemicals
- Case Study- Health Care
- Case Study-consumer Goods Industry
- Case Study- Energy
- Case Study - Casino
- Key Takeaways







## AIS

With the rising demand in scalable technology, AIS provides tailored goal-setting based on your organization's needs and expectations. With products geared towards the growing needs of your organization's customers and employees, AIS has innovative and value-driven solutions.

### Learning Partners



#### SAS Management, Inc.

SAS Management, Inc. has been a leader in the training, certification and consulting services industry in the Philippines. With offices in Makati, Ortigas and Cebu, Philippines, the company has been the top training and consulting company for over 9 years. In its years of existence, it has provided certificates to over 100,000 professionals including 10,000 participants in the 160+ courses that have been conducted just during the 2020-2021 pandemic alone. The most sought-after courses being offered are ITIL, Project Management Professional (PMP)®, COBIT 5, Six Sigma Yellow Belt, Six Sigma Green Belt, PRINCE2, and organizational skills, among others.



#### Simplilearn

Simplilearn, based in California and India, is the world's #1 online bootcamp and one of the world's the leading certification and training providers. Simplilearn trained over 2,000,000 professionals with 2,000+ trainers and provides over 400 different courses.

### Technology Partner



#### Freshworks

With over 40,000 customers, Freshworks is a business solutions software provider with products ranging from IT helpdesk and service desk, customer relationship management, live chat, marketing automation, phone system, and HR.

### Partners & Affiliates



PECB

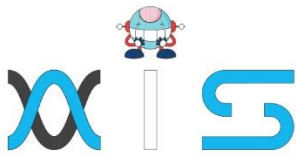
SDI Service Desk Institute

EC-COUNCIL

MIT Massachusetts Institute of Technology



P PURDUE UNIVERSITY



*The program presented, as well as a wide range of programs are products of the partnership of AIS, SAS Management, Inc., and Simplilearn. With a common goal of providing the best practice of facilitating learning with an array of choices available in the online platform in this time of digitization.*

## Office Addresses

### NXT AIS Inc.

Juan Antonio III Building  
315 Maysilo Circle, Mandaluyong, Philippines

### SAS Management, Inc.

- **Head Office**

Unit 1602 Cityland 10 Tower  
2 6815 HV dela Costa cor Ayala Avenue  
Makati City, Philippines

- **Branch Office**

Unit 204 Villa Building  
Jupiter St. corner Makati Avenue  
Makati City, Philippines

- **Branch Office**

Room 201 2nd floor OLS Building  
443 Gorordo Avenue., Brgy. Kamputhaw  
Cebu City, Philippines

- **Branch Office**

Malaysia - SAS Management  
Sdn Bhd 6f-16, IOI Business Park,  
Persiaran Puchong Jaya  
47170, Selangor

### Simplilearn

- **Simplilearn Americas, Inc  
Pvt Ltd.**

201 Spear Street, Suite 1100,  
San Francisco, CA 94105 United States

- **Simplilearn Solutions  
Pte Ltd.**

NALANDA 53/1 C, Manoj Arcade, 24th Main Rd,  
Sector 2, HSR Layout, Bengaluru  
560102, Karnataka, India.

- **Simplilearn Singapore**

#14-302, The Plaza, 7500A Beach Rd,  
Singapore 199591