



Introduction to Cyber Security



Table of **Contents:**

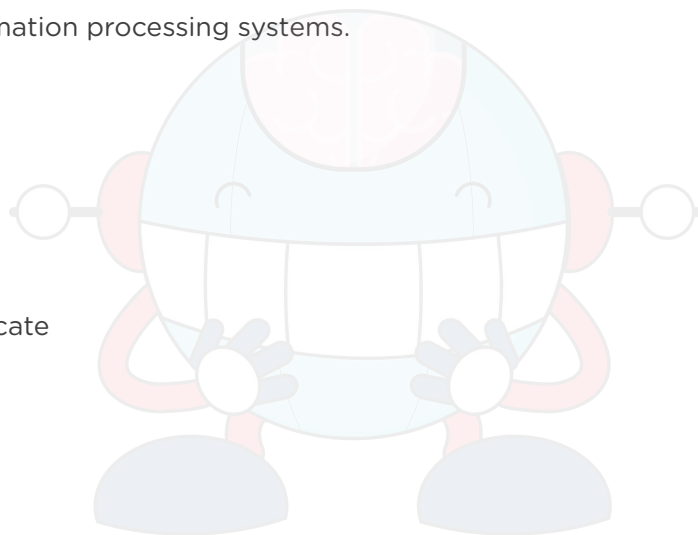
- > Program Overview
- > Program Features
- > Delivery Mode
- > Prerequisites
- > Target Audience
- > Key Learning Outcomes
- > Certification Details and Criteria
- > Course Curriculum
- > About Us

Program **Overview:**

Introduction to Cyber Security course for beginners is designed to give you a foundational look at today's cyber security landscape and provide you with the tools to evaluate and manage security protocols in information processing systems.

Program **Features:**

- > 4 hours of online self-paced learning
- > Lifetime access to self-paced learning
- > Industry-recognized course completion certificate
- > Industry examples and case studies



Delivery **Mode:**

Online Self learning.

Prerequisites:

There are no prerequisites to take this course. Anyone with an interest in the cybersecurity field may take this course.

Target **Audience:**

The cyber security training for beginners is ideal for professionals in any organizational role who would like to learn the fundamentals of cyber security and pursue a career in this booming field. The cyber security course also caters to C-level executives and middle management professionals who want to gain awareness of (and address) cyber security risks.



Key Learning **Outcomes:**

By the end of this online Introduction to Cyber Security course, you will be able to:

- > Understand and become familiar with the cyber security field
- > Develop and manage an information security program
- > Know about cyber threats, vulnerabilities, and risks
- > Perform business impact analysis, and carry out disaster recovery testing
- > Gain knowledge on different types of security methods and network security controls
- > Know more about security governance and risk management

Certification Details and **Criteria:**

- > Complete the online self-learning course
- > Complete the course-end assessment with a minimum 80% score

Course **Curriculum:**

Lesson 1 - Course Introduction

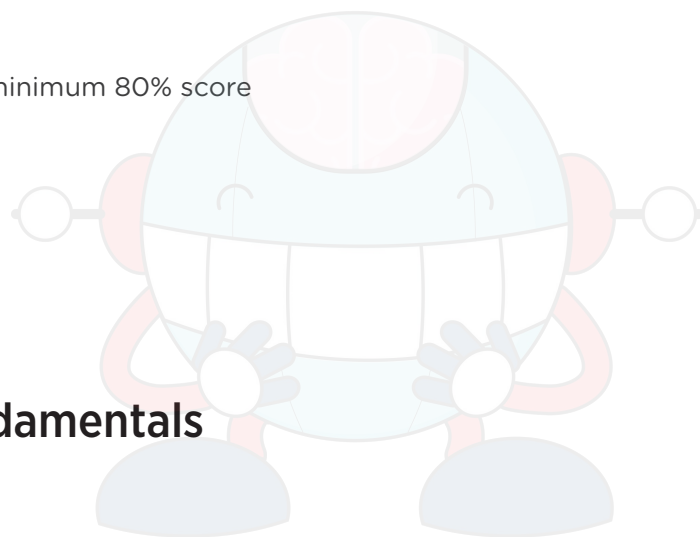
- > Course Introduction

Lesson 2 - Cyber Security Fundamentals

- > Introduction
- > Fundamentals of Cyber Security
- > Threat Actors, Attacks, and Mitigation
- > Security Policies and Procedures
- > Cybersecurity Mitigation Methods
- > Key Takeaways

Lesson 3 - Enterprise Architecture and Components

- > Introduction
- > Secure Architecture
- > Wireless Networks
- > Network Security Controls
- > Cloud, Virtualization, BYOD, and IoT Security
- > Security Testing
- > Key Takeaways



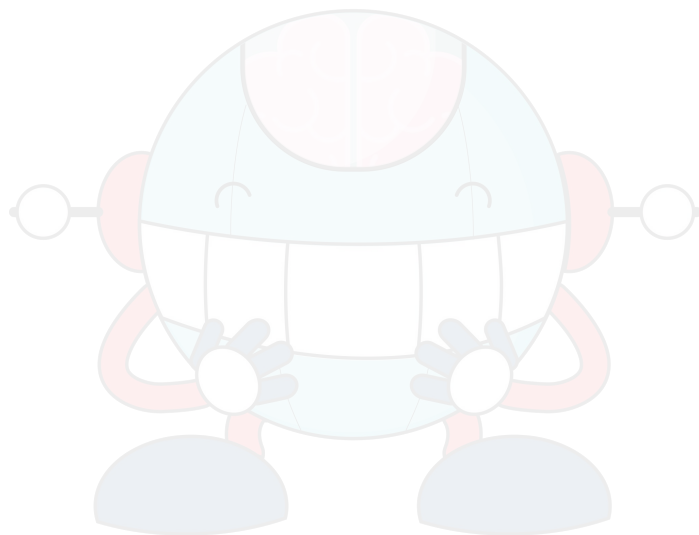


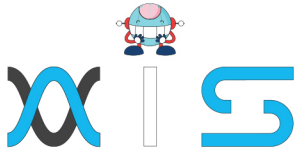
Lesson 4 - Information System Governance and Risk Assessment

- Introduction
- Information Security Governance
- Risk Management
- Information Security Programs
- Key Takeaways

Lesson 5 - Incident Management

- Introduction
- Developing an Incident Management and Response System
- Digital Forensics
- Business Continuity and Disaster Recovery
- Key Takeaways





AIS

With the rising demand in scalable technology, AIS provides tailored goal-setting based on your organization's needs and expectations. With products geared towards the growing needs of your organization's customers and employees, AIS has innovative and value-driven solutions.

Learning Partners



SAS Management, Inc.

Premiere training and consulting services company, SAS Management, Inc. has been in the industry for a decade. SAS Management, inc. focuses on creating value in every learning and consulting experience by providing the best possible output – whether in a virtual classroom setup, e-learning, or face-to-face. SAS Management, Inc. is the leading training and certification provider for ITIL, Project Management Professional, ISO certifications, PRINCE2, SDI Service Desk Analyst and Manager, Agile, and a host of many programs and courses.



Simplilearn

Tagged as the “World's #1 Online Bootcamp”, Simplilearn provides online education and in-house training for professional certification courses. Founded in 2010, Simplilearn offers more than 100 programs, helping professionals reach their learning potentials needed to work in the digital economy.

Technology Partner



Freshworks

With over 40,000 customers, Freshworks is a business solutions software provider with products ranging from IT helpdesk and service desk, customer relationship management, live chat, marketing automation, phone system, and HR.

Partners & Affiliates

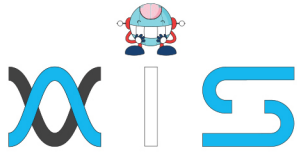


PECB

SDI Service Desk Institute

EC-COUNCIL





The program presented, as well as a wide range of programs are products of the partnership of AIS, SAS Management, Inc., and Simplilearn. With a common goal of providing the best practice of facilitating learning with an array of choices available in the online platform in this time of digitization.

Office Addresses

AI Services

Juan Antonio III Building
315 Maysilo Circle, Mandaluyong, Philippines

SAS Management, Inc.

- **Head Office**

Unit 1602 Cityland 10 Tower
2 6815 HV dela Costa cor Ayala Avenue
Makati City, Philippines

- **Branch Office**

Unit 204 Villa Building
Jupiter St. corner Makati Avenue
Makati City, Philippines

- **Branch Office**

Room 201 2nd floor OLS Building
443 Gorordo Avenue., Brgy. Kamputhaw
Cebu City, Philippines

- **Branch Office**

Malaysia - SAS Management
Sdn Bhd 6f-16, IOI Business Park,
Persiaran Puchong Jaya
47170, Selangor

Simplilearn

- **Simplilearn Americas, Inc
Pvt Ltd.**

201 Spear Street, Suite 1100,
San Francisco, CA 94105 United States

- **Simplilearn Solutions
Pte Ltd.**

NALANDA 53/1 C, Manoj Arcade, 24th Main Rd,
Sector 2, HSR Layout, Bengaluru
560102, Karnataka, India.

- **Simplilearn Singapore**

#14-302, The Plaza, 7500A Beach Rd,
Singapore 199591