

# INTRODUCTION TO BUSINESS ANALYSIS

Course Outline





## Program Overview

Simplilearn's Introduction to Business Analysis course provides an overview of the role of a business analyst and covers the latest tools and techniques of the trade. This course will help you understand how business analysis adds value to an organization, helping you monitor, forecast, and plan using data.

## Program Features

- High quality e-learning content
- 1.5 hours of high-quality elearning content Course ebook available
- Lifetime access to course material
- Comprehensive, up-to-date content
- Industry-recognized course completion certificate

## Delivery Mode

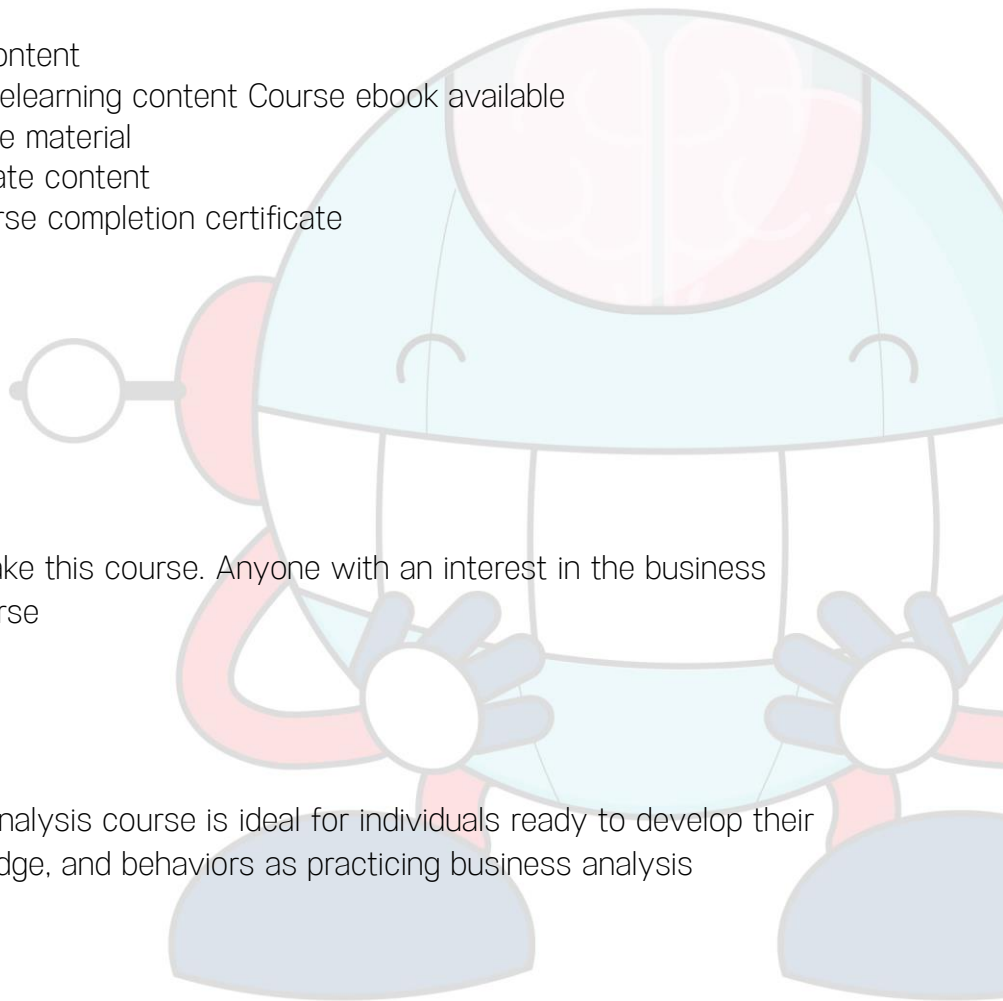
Online self-learning

## Prerequisites

There are no prerequisites to take this course. Anyone with an interest in the business analysis field may take this course

## Target Audience

This Introduction to Business Analysis course is ideal for individuals ready to develop their business analysis skills, knowledge, and behaviors as practicing business analysis professionals.





## Key Learning Outcomes

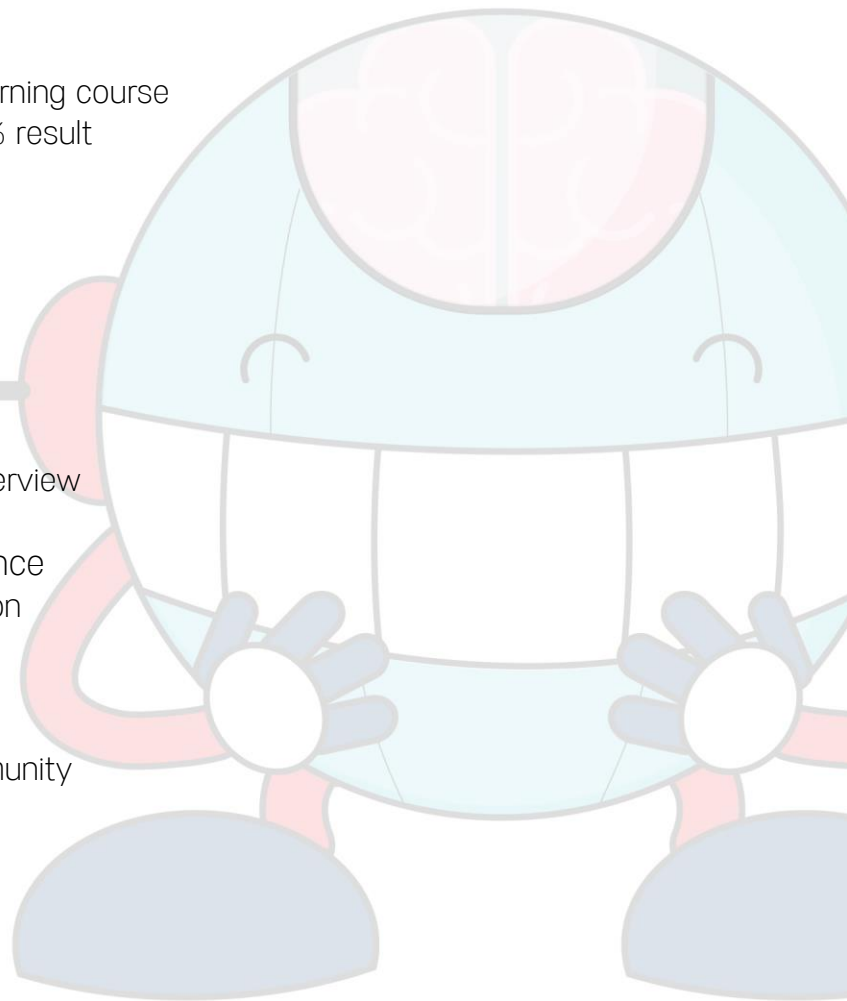
- Understand the definition of business analysis
- Identify how business analysis adds value to an organization
- Recognize and analyze the business knowledge areas
- Differentiate between requirements and designs

## Certification Details & Criteria:

- Complete 85% of the online self-learning course
- Pass the simulation test with a 60% result

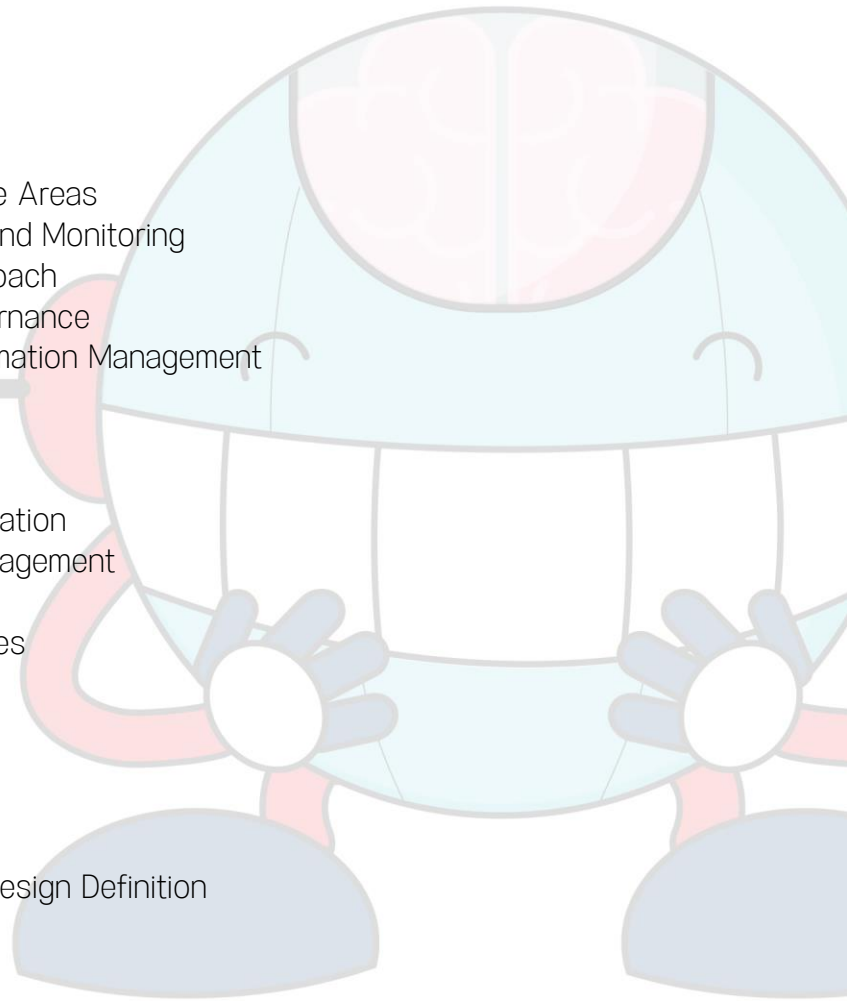
## Course Introduction

- **Lesson 01** - Course Introduction
  - Course Introduction
- **Lesson 02** – Business Analysis Overview
  - Decoding Artificial Intelligence
  - Business Analysis Introduction
  - Business Analysis Overview
  - Business Analyst
  - Role of a Business Analyst
  - The Business Analysis Community
  - Key Takeaways
  - Knowledge Check



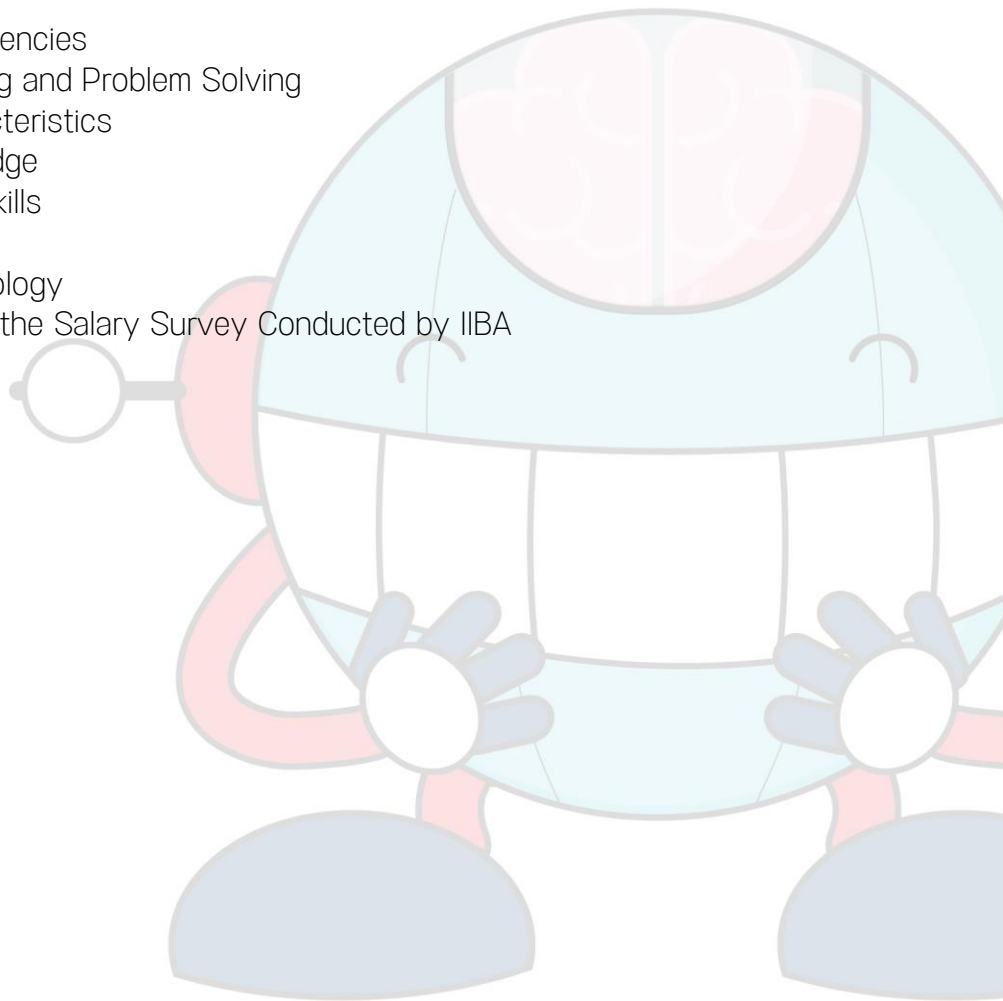


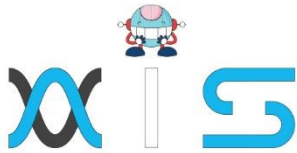
- **Lesson 03** – Business Analysis Concepts
  - Learning Objective
  - Business Analysis Concepts
  - Key Terms: Part One
  - Key Terms: Part Two
  - Stakeholders Stakeholders - Project Manager
  - Key Takeaways
  - Knowledge Check
  
- **Lesson 04** – Knowledge Areas
  - Introduction
  - Business Analysis Knowledge Areas
  - Business Analysis Planning and Monitoring
  - Plan Business Analysis Approach
  - Plan Business Analysis Governance
  - Plan Business Analysis Information Management
  - Elicitation and Collaboration
  - Preparing for Elicitation
  - Confirm Elicitation Results
  - Manage Stakeholder Collaboration
  - Requirements Life Cycle Management
  - Maintain Requirements
  - Assess Requirements Changes
  - Approve Requirements
  - Strategy Analysis
  - Business Need
  - Define Future State
  - Define Change Strategy
  - Requirements Analysis and Design Definition
  - Verify Requirements
  - Define Design Options





- Solution Evaluation
  - Measure Solution Performance
  - Assess Enterprise Limitations
  - Key Takeaways
  - Knowledge Check
- 
- **Lesson 05** - Business Analyst Skills and Competencies
    - Overview
    - Skills and Competencies
    - Analytical Thinking and Problem Solving
    - Behavioral Characteristics
    - Business Knowledge
    - Communication Skills
    - Interaction Skills
    - Tools and Technology
    - Key Results from the Salary Survey Conducted by IIBA
    - Career Path
    - Key Takeaways
    - Knowledge Check





## AIS

With the rising demand in scalable technology, AIS provides tailored goal-setting based on your organization's needs and expectations. With products geared towards the growing needs of your organization's customers and employees, AIS has innovative and value-driven solutions.

### Learning Partners



#### SAS Management, Inc.

SAS Management, Inc. has been a leader in the training, certification and consulting services industry in the Philippines. With offices in Makati, Ortigas and Cebu, Philippines, the company has been the top training and consulting company for over 9 years. In its years of existence, it has provided certificates to over 100,000 professionals including 10,000 participants in the 160+ courses that have been conducted just during the 2020-2021 pandemic alone. The most sought-after courses being offered are ITIL, Project Management Professional (PMP)®, COBIT 5, Six Sigma Yellow Belt, Six Sigma Green Belt, PRINCE2, and organizational skills, among others.



#### Simplilearn

Simplilearn, based in California and India, is the world's #1 online bootcamp and one of the world's the leading certification and training providers. Simplilearn trained over 2,000,000 professionals with 2,000+ trainers and provides over 400 different courses.

### Technology Partner



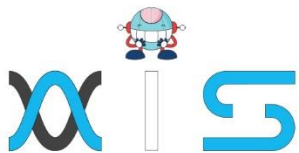
#### Freshworks

With over 40,000 customers, Freshworks is a business solutions software provider with products ranging from IT helpdesk and service desk, customer relationship management, live chat, marketing automation, phone system, and HR.

### Partners & Affiliates







*The program presented, as well as a wide range of programs are products of the partnership of AIS, SAS Management, Inc., and Simplilearn. With a common goal of providing the best practice of facilitating learning with an array of choices available in the online platform in this time of digitization.*

## Office Addresses

### NXT AIS Inc.

Juan Antonio III Building  
315 Maysilo Circle, Mandaluyong, Philippines

### SAS Management, Inc.

- **Head Office**

Unit 1602 Cityland 10 Tower  
2 6815 HV dela Costa cor Ayala Avenue  
Makati City, Philippines

- **Branch Office**

Unit 204 Villa Building  
Jupiter St. corner Makati Avenue  
Makati City, Philippines

- **Branch Office**

Room 201 2nd floor OLS Building  
443 Gorordo Avenue., Brgy. Kamputhaw  
Cebu City, Philippines

- **Branch Office**

Malaysia - SAS Management  
Sdn Bhd 6f-16, IOI Business Park,  
Persiaran Puchong Jaya  
47170, Selangor

### Simplilearn

- **Simplilearn Americas, Inc  
Pvt Ltd.**

201 Spear Street, Suite 1100,  
San Francisco, CA 94105 United States

- **Simplilearn Solutions  
Pte Ltd.**

NALANDA 53/1 C, Manoj Arcade, 24th Main Rd,  
Sector 2, HSR Layout, Bengaluru  
560102, Karnataka, India.

- **Simplilearn Singapore**

#14-302, The Plaza, 7500A Beach Rd,  
Singapore 199591