

# Executive Leadership Principles Program

Course Outline





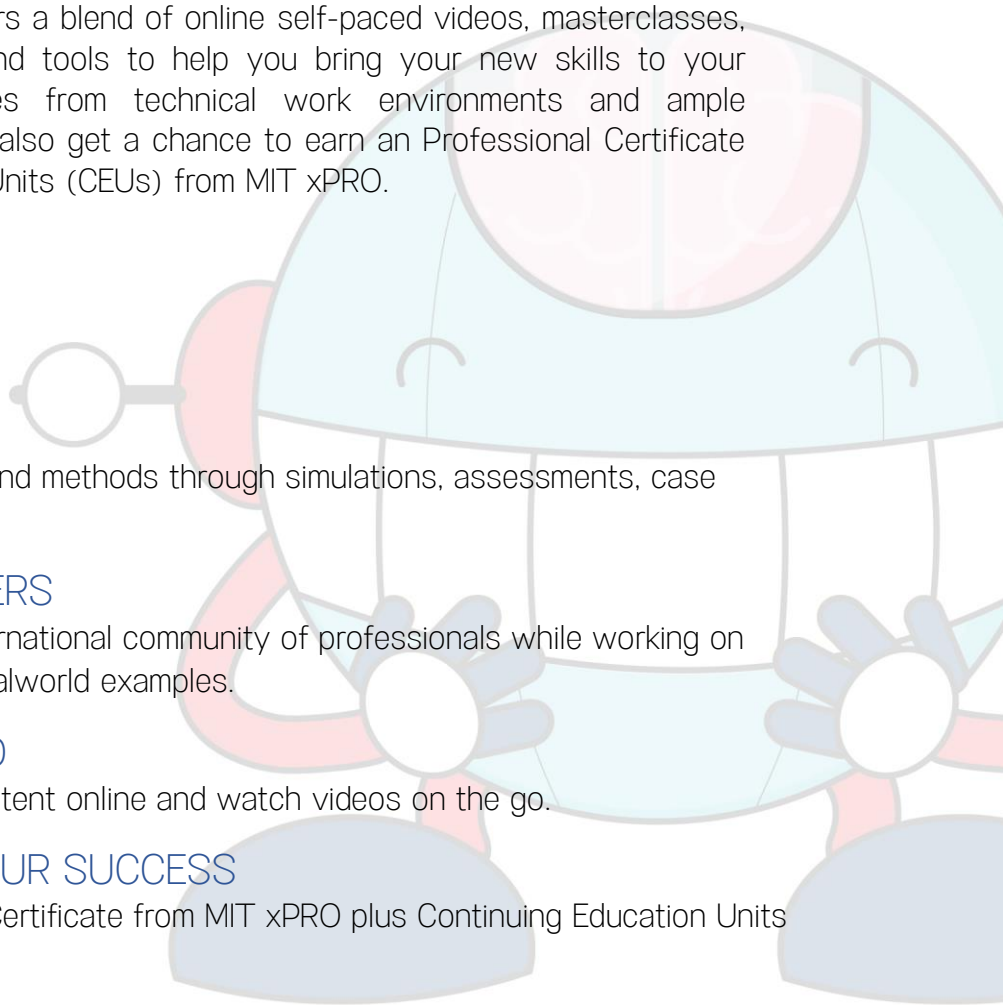
## Course Overview:

The Executive Leadership Principles Program is specifically designed by MIT xPRO to empower you with the leadership acumen needed to solve problems, innovate, and drive change. You'll learn from MIT faculty and industry experts while connecting with an international community of professionals and working on projects based on real world examples. Apply your knowledge and learn using simulations, assessments, case studies, and tools.

This Professional Program offers a blend of online self-paced videos, masterclasses, assessments, case studies, and tools to help you bring your new skills to your organization through examples from technical work environments and ample opportunity for reflection. You also get a chance to earn an Professional Certificate and five Continuing Education Units (CEUs) from MIT xPRO.

## Key Features:

- **LEARN BY DOING**  
Practice processes and methods through simulations, assessments, case studies, and tools.
- **LEARN FROM OTHERS**  
Connect with an international community of professionals while working on projects based on realworld examples.
- **LEARN ON DEMAND**  
Access all of the content online and watch videos on the go.
- **DEMONSTRATE YOUR SUCCESS**  
Earn a Professional Certificate from MIT xPRO plus Continuing Education Units (CEUs).





- REFLECT AND APPLY

Bring your new skills to your organization, through examples from technical work environments and ample prompts for reflection.

- LEARN FROM THE BEST

Gain insights from MIT faculty and industry experts.

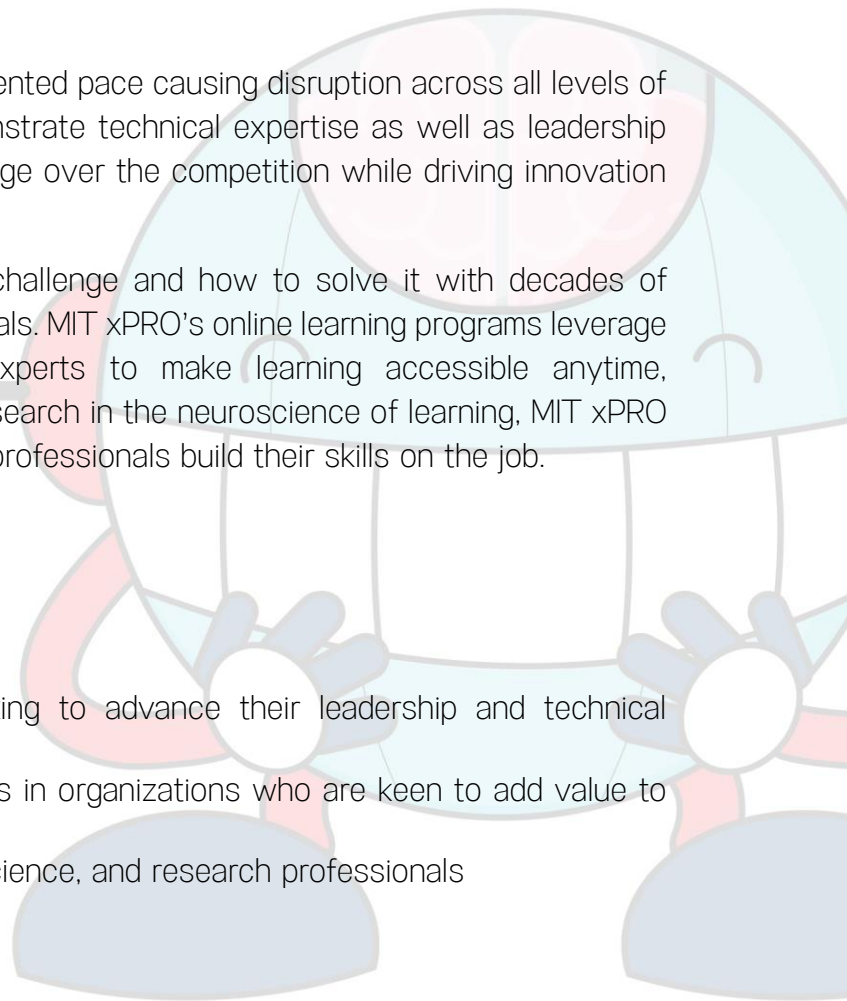
## About MIT xPRO

Technology is accelerating at an unprecedented pace causing disruption across all levels of business. Tomorrow's leaders must demonstrate technical expertise as well as leadership acumen in order to maintain a technical edge over the competition while driving innovation in an everchanging environment.

MIT has a unique understanding of this challenge and how to solve it with decades of experience developing technical professionals. MIT xPRO's online learning programs leverage vetted content from world-renowned experts to make learning accessible anytime, anywhere. Designed using cutting-edge research in the neuroscience of learning, MIT xPRO programs are application focused, helping professionals build their skills on the job.

## Who should enroll?

- Busy, ambitious professionals looking to advance their leadership and technical capabilities while on the job
- Individual contributors and managers in organizations who are keen to add value to their team and the organization
- Early and mid-career engineering, science, and research professionals





## Application Process

The application process consists of three simple steps. An offer of admission will be made to the selected candidates and accepted by the candidates by paying the admission fee.

- **STEP 1: Submit an Application**

Fill out the application and include a succinct statement of purpose to explain to our admissions staff why you are qualified for and interested in the Executive Leadership Principles Program.

- **STEP 2: Application Review**

A group of admissions counselors will analyze your application and statement of purpose after you submit it to ascertain your qualifications and interest in the program.

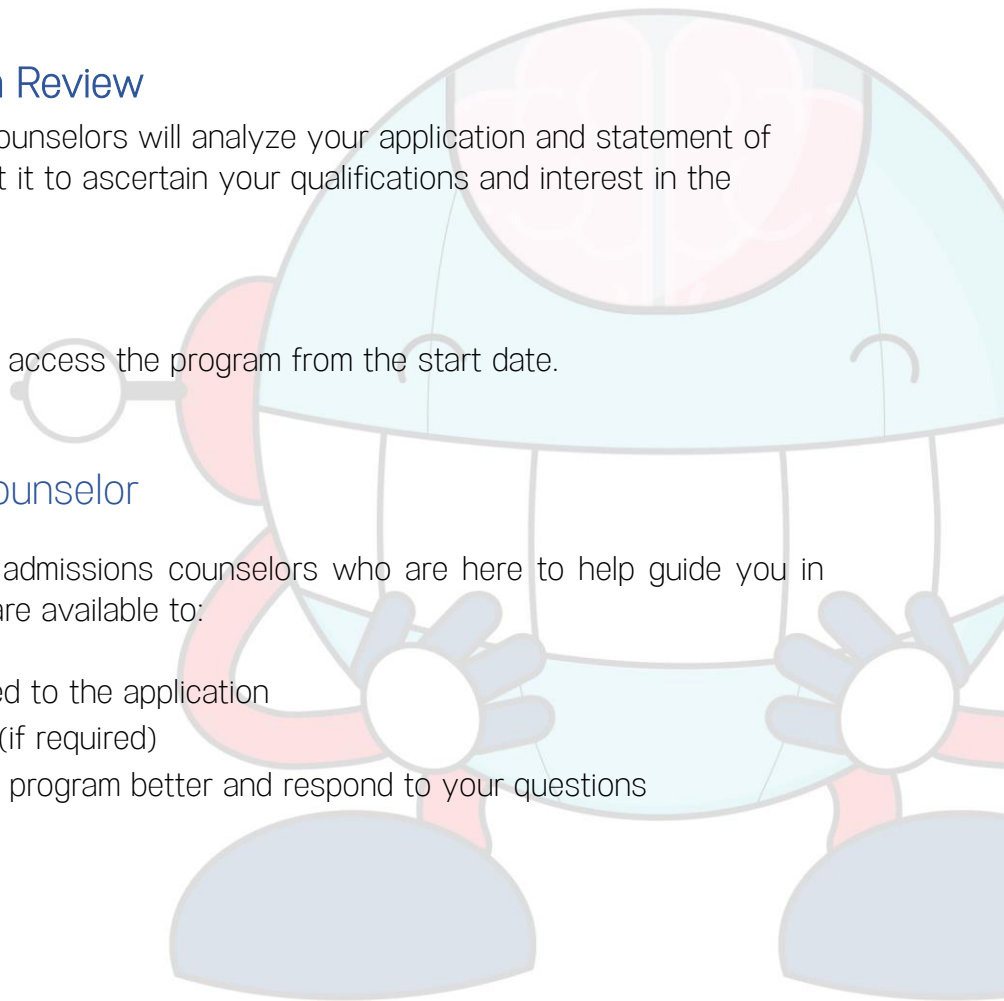
- **STEP 3: Admission**

Selected candidates can access the program from the start date.

## Talk to an Admissions Counselor

We have a team of dedicated admissions counselors who are here to help guide you in applying to the program. They are available to:

- Address questions related to the application
- Assist with financial aid (if required)
- Help you understand the program better and respond to your questions





## Program Outcomes:

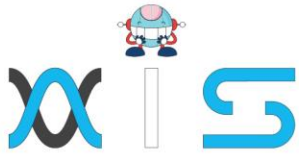
At the end of this program, you will be able to:

- Solve problems by engaging in problem-led leadership
- Lead positive change in your organization
- Discover and apply your strengths as a leader
- Demonstrate leadership capabilities in the context of technical work environments
- Create value by aligning work processes with products and strategy
- Negotiate and manage conflicts using power and influence approaches
- Navigate an organization's culture and networks successfully

## Who should enroll in this Program?

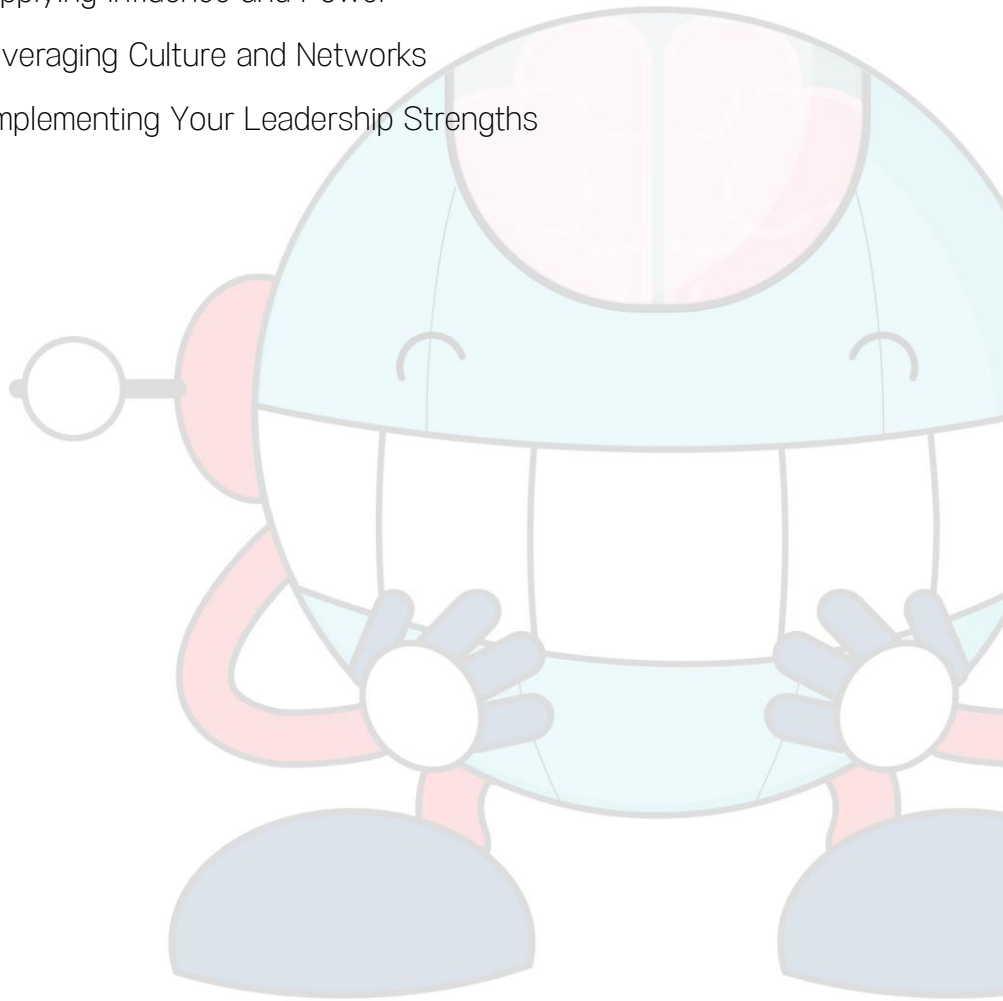
This supply chain management program caters to graduates in any discipline and working professionals from diverse backgrounds. Candidates need not have any prior experience in supply chain management to enroll in this program. The digital supply chain management program is best suited for individuals seeking the following careers:

- Professionals (supply chain managers, supply chain generalists, supply chain consultants, quality control supervisors, IT analysts, project managers, Six Sigma professionals,) looking to learn how to improve supply chain efficiency through technology
- Mid- to upper-level managers responsible for bottom-line growth who want to learn skills to implement cost reductions and improve organizational capabilities
- COOs, factory heads, heads of logistics, and procurement and operations professionals looking to automate the supply chain in their organizations through the adoption of emerging technologies

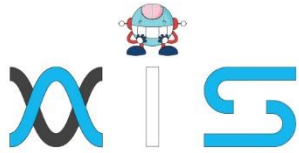


## Learning Path:

1. Understanding Organizational Strategy and Capabilities
2. Negotiating and Applying Influence and Power
3. Navigating and Leveraging Culture and Networks
4. Discovering and Implementing Your Leadership Strengths







## AIS

With the rising demand in scalable technology, AIS provides tailored goal-setting based on your organization's needs and expectations. With products geared towards the growing needs of your organization's customers and employees, AIS has innovative and value-driven solutions.

### Learning Partners



#### SAS Management, Inc.

SAS Management, Inc. has been a leader in the training, certification and consulting services industry in the Philippines. With offices in Makati, Ortigas and Cebu, Philippines, the company has been the top training and consulting company for over 9 years. In its years of existence, it has provided certificates to over 100,000 professionals including 10,000 participants in the 160+ courses that have been conducted just during the 2020-2021 pandemic alone. The most sought-after courses being offered are ITIL, Project Management Professional (PMP)®, COBIT 5, Six Sigma Yellow Belt, Six Sigma Green Belt, PRINCE2, and organizational skills, among others.



#### Simplilearn

Simplilearn, based in California and India, is the world's #1 online bootcamp and one of the world's the leading certification and training providers. Simplilearn trained over 2,000,000 professionals with 2,000+ trainers and provides over 400 different courses.

### Technology Partner

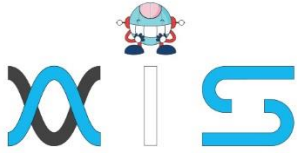


#### Freshworks

With over 40,000 customers, Freshworks is a business solutions software provider with products ranging from IT helpdesk and service desk, customer relationship management, live chat, marketing automation, phone system, and HR.

### Partners & Affiliates





*The program presented, as well as a wide range of programs are products of the partnership of AIS, SAS Management, Inc., and Simplilearn. With a common goal of providing the best practice of facilitating learning with an array of choices available in the online platform in this time of digitization.*

## Office Addresses

### NXT AIS Inc.

Juan Antonio III Building  
315 Maysilo Circle, Mandaluyong, Philippines

### SAS Management, Inc.

- **Head Office**

Unit 1602 Cityland 10 Tower  
2 6815 HV dela Costa cor Ayala Avenue  
Makati City, Philippines

- **Branch Office**

Unit 204 Villa Building  
Jupiter St. corner Makati Avenue  
Makati City, Philippines

- **Branch Office**

Room 201 2nd floor OLS Building  
443 Gorordo Avenue., Brgy. Kamputhaw  
Cebu City, Philippines

- **Branch Office**

Malaysia - SAS Management  
Sdn Bhd 6f-16, IOI Business Park,  
Persiaran Puchong Jaya  
47170, Selangor

### Simplilearn

- **Simplilearn Americas, Inc Pvt Ltd.**

201 Spear Street, Suite 1100,  
San Francisco, CA 94105 United States

- **Simplilearn Solutions Pte Ltd.**

NALANDA 53/1 C, Manoj Arcade, 24th Main Rd,  
Sector 2, HSR Layout, Bengaluru  
560102, Karnataka, India.

- **Simplilearn Singapore**

#14-302, The Plaza, 7500A Beach Rd,  
Singapore 199591