

DOCKER CERTIFIED ASSOCIATE TRAINING

Course Outline





Program Overview:

Simplilearn's Docker Certification Training Course is aligned with the Docker Certified Associate Examination. It will teach you the core Docker technologies such as Docker Hub, Docker Compose, Docker Swarm, Dockerfile, Docker Containers, Docker Engine, Docker Images, Docker Network, Docker Daemon, and Docker Storage along with real-life case studies.

Program Features:

- 20 hours of instructor-led training
- 1 course-end assessment
- 7 lesson-end projects
- 30+ assisted and unassisted practices and demos
- Lesson-end knowledge checks
- Industry-recognized course completion certificate

Delivery Mode:

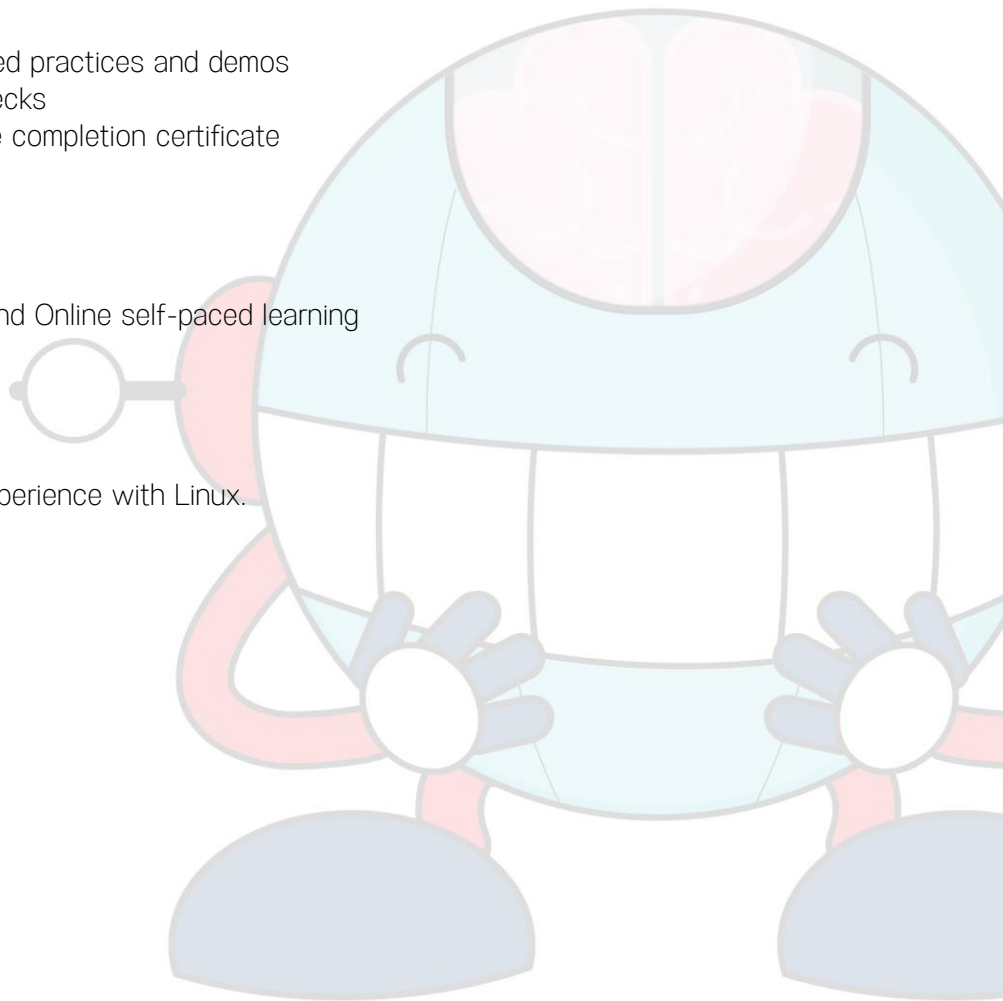
Blended - Live Virtual Classroom and Online self-paced learning

Prerequisites:

Good Knowledge and Hands-on experience with Linux.

Target Audience:

- Freshers
- Software developers
- Software engineers
- Technical leads
- Test Engineers





Key Learning Outcomes:

By the end of this online Docker Certified Associate Training, you will be able to:

- Comprehend Docker and its role in DevOps life cycle
- Create an image, describe layers of image, use of Dockerfile, and using the registry for security
- Define and create containers, swarm, volumes, networks, and an overview of compose and template
- Create a different kind of networks, and identify and differentiate between different ports
- Define
- Docker security, identity roles, client bundles, and client-server authentication
- Explain Docker EE, UCP, and DTR
- Grasp the concepts of Docker engine, logging drivers, graph drivers, storage drivers, and device mappers

Certification Details and Criteria:

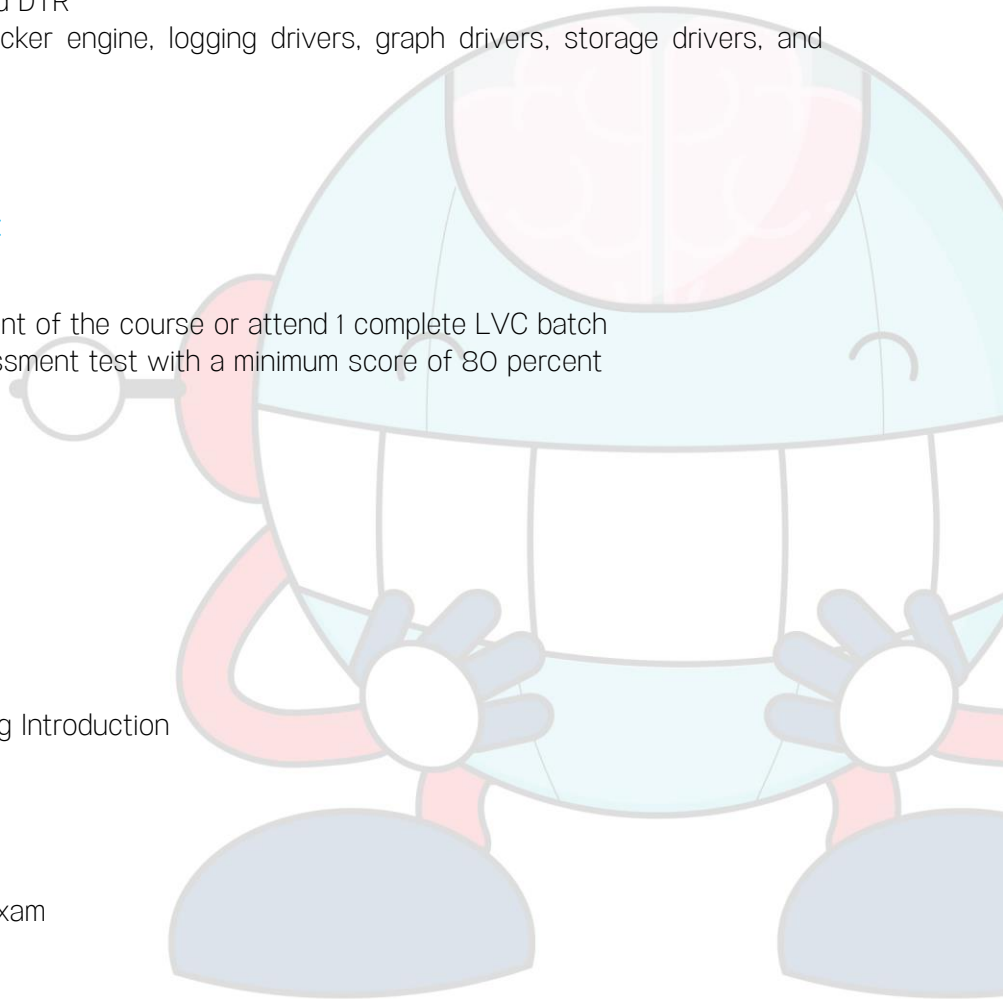
- Complete at least 85 percent of the course or attend 1 complete LVC batch
- Pass the course-end assessment test with a minimum score of 80 percent

Course Curriculum:

Self Paced Curriculum

Lesson 1: Introduction

- Docker Certification Training Introduction
- Docker Pre-read
- Course Overview
- Introduction to Docker
- Why Docker
- Overview of Certification Exam





Lesson 2: Understanding Docker

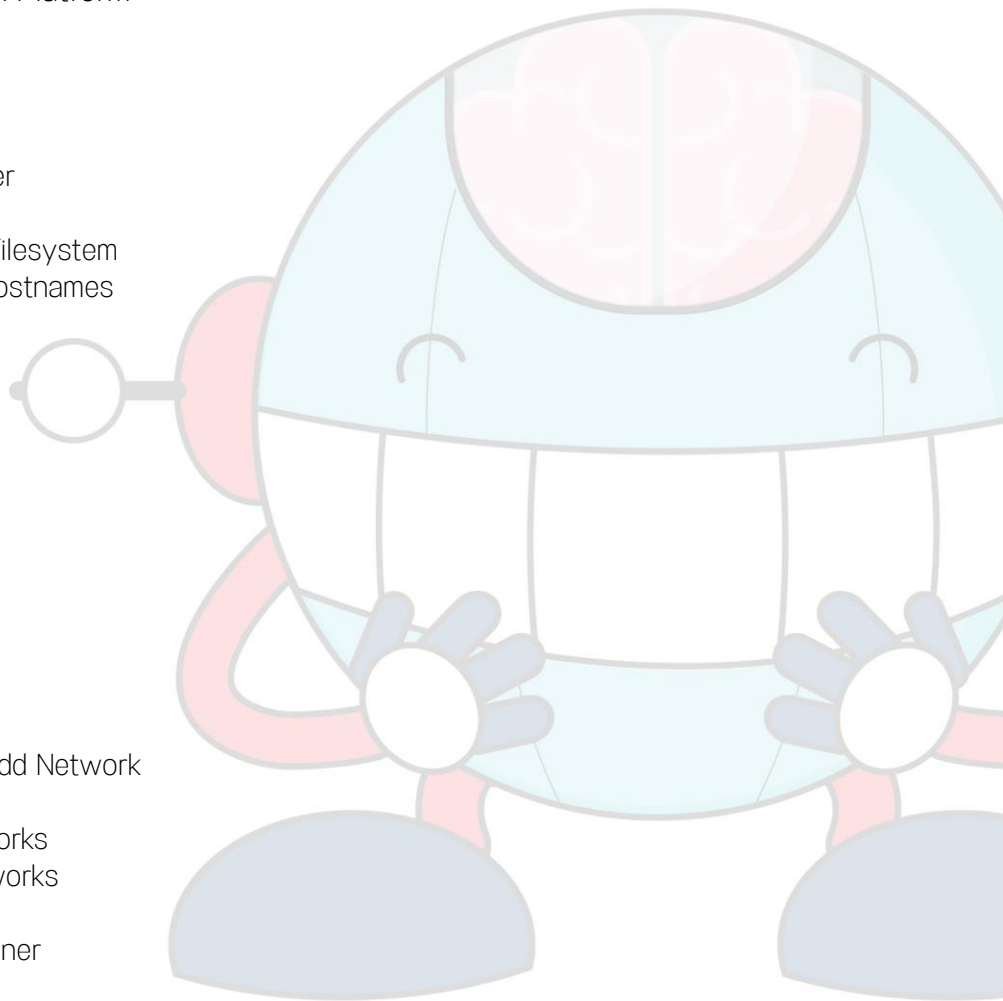
- Understanding Docker Overview
- Docker Architecture Engine And Objects
- Docker Architecture InAction
- Docker Architecture Container Format
- Images And Containers
- Containerization And Virtualization
- Docker Ecosystem

Lesson 03: Docker CE on Linux Platform

- Docker On Linux Platform
- Installation: CentOS
- Installation: continued
- Deploy, Login, Exit Container
- List, Start, Stop Restart
- Containers Containers on Filesystem
- Working with Containers Hostnames
- Multiple Containers
- Stats Inspect
- Deleting Containers
- End of Module

Lesson 04: Docker Networking

- Docker Networking
- None Network
- Container Networking
- Bridge Network Host
- Network Disconnect And Add Network
- Introduction to Overlay
- Network Create New Networks
- Exercise: Use Custom Networks
- Remove Networks
- Multiple Networks In Container





Lesson 05: Docker Images

- Docker Images
- Docker Images: Recap
- Docker Images CLI Commands
- Docker Images CLI Commands: Contd
- Search and Pull Images from Docker Hub
- Build Image using Dockerfile
- Build Image using Commit
- Push Images to Docker Hub
- Docker file Instructions

Lesson 06: Docker Storage and Volumes

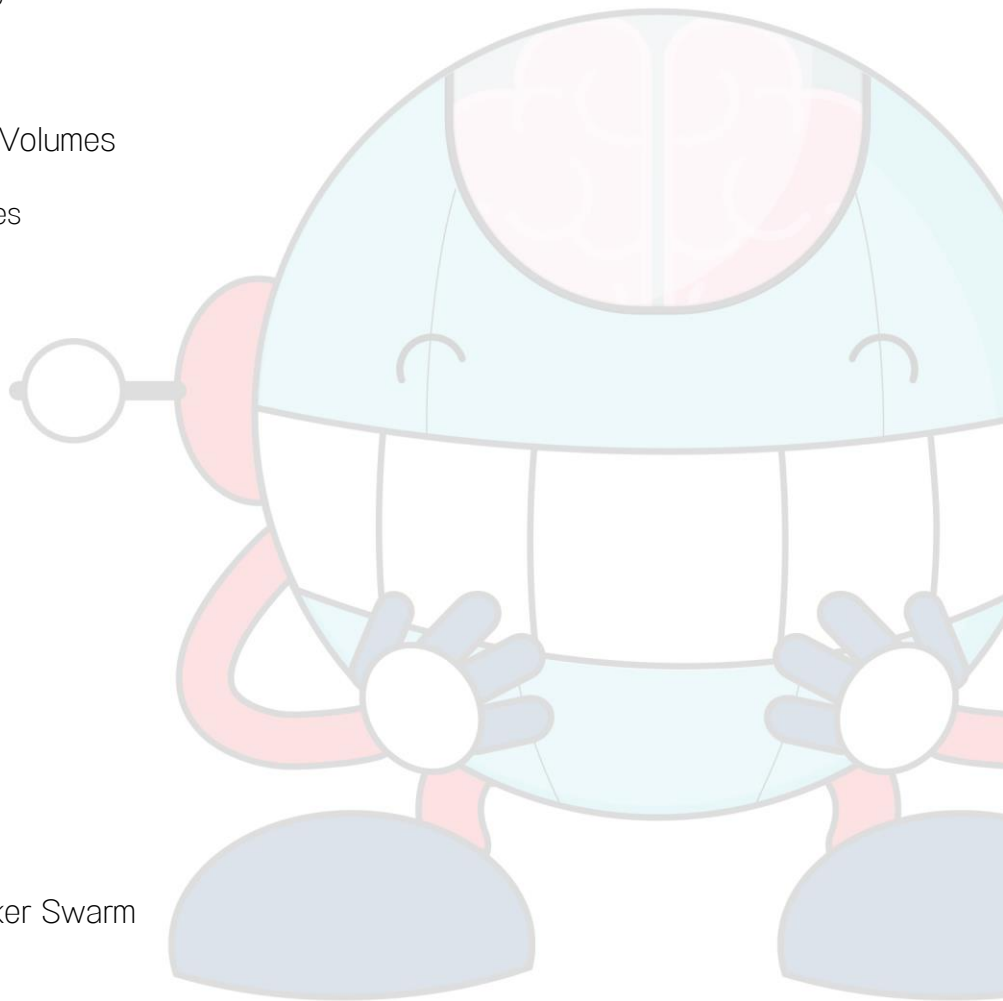
- Docker Storage and Volumes
- Docker Storage Drivers
- Selecting Storage Driver
- Persistent Storage
- Manage Application Data
- Docker Volumes
- Docker Bind Mounts
- Docker tmpfs Mounts
- External Storage

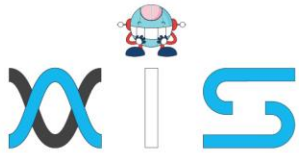
Lesson 07: Docker Compose

- Docker Compose
- Case for Docker Compose
- Compose Installation
- Compose Lab

Lesson 08: Orchestration Docker Swarm

- Docker Swarm
- Concepts of Swarm





- Create Swarm
- Maintain Swarm
- Deploy Services to Swarm
- Updates to Services
- Managing Swarm Services
- Secrets and Overlay Network
- Docker Stack

Lesson 09: Universal Control Plane

- Universal Control Plane
- Introduction to UCP
- Deploy, Manage, and Monitor UCP
- Access Control
- LDAP with UCP
- Client Certificate Bundles External Certificates

Lesson 10: Docker Trusted Registry

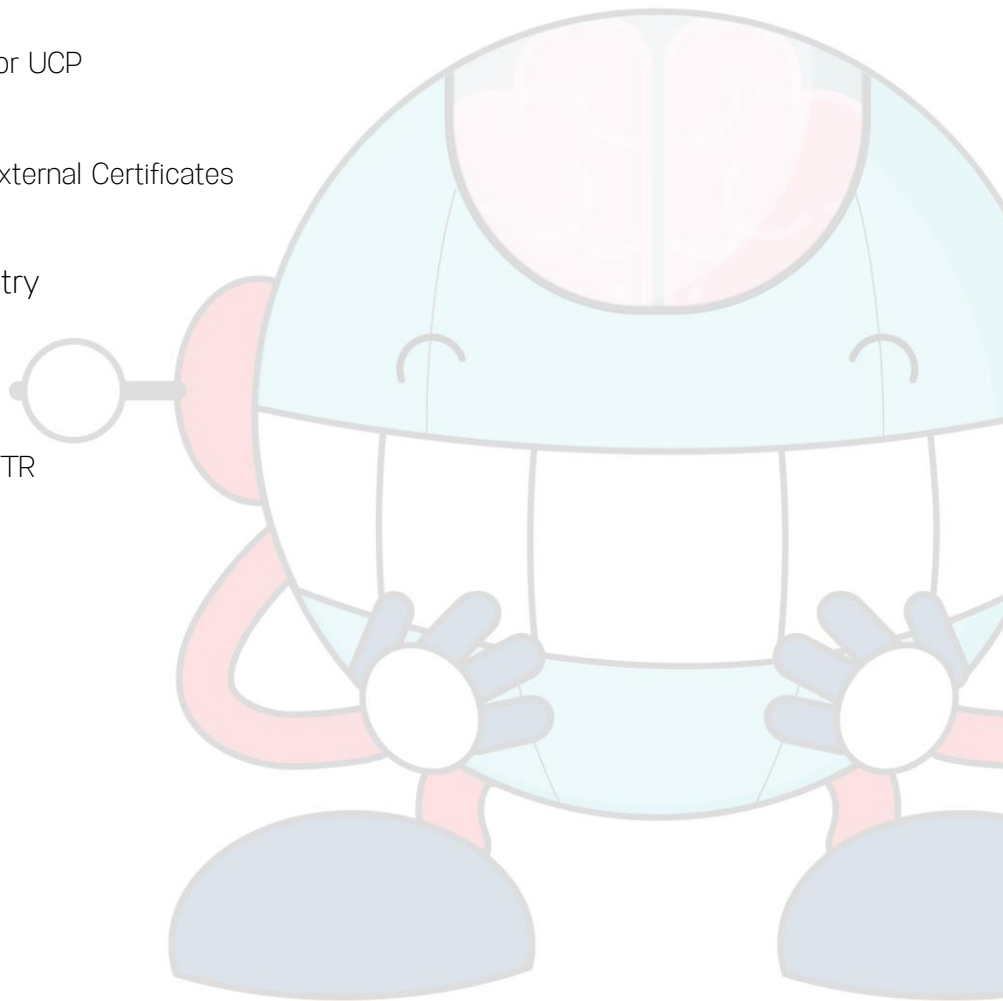
- Docker Trusted Registry
- Introduction Deploy DTR
- Backup Swarm UCP DTR
- Miscellaneous Topic with DTR

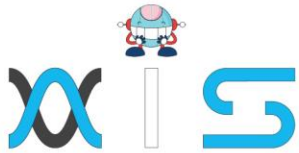
Lesson 11: Security

- Docker Security Logs
- Security Scanning
- Docker Content Trust
- Security With MTLS
- Logs and Logging Drivers

Lesson 12: The DCA Test

- Taking the Test





Live Virtual Class Curriculum

Lesson 01: Course Introduction

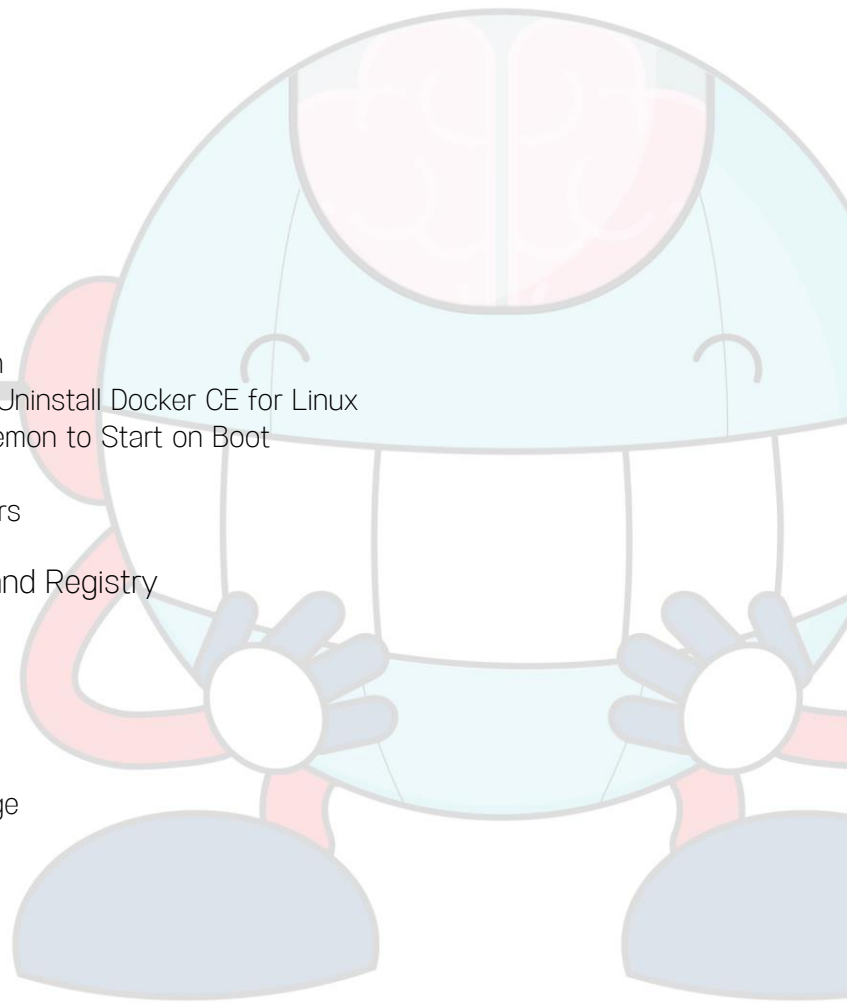
- What is Docker?
- Features of Docker
- Virtual Machine vs. Docker
- Industries Using Docker
- Good To Know
- Exam Information
- Examination Format
- Course Outline
- Course Outcome
- Course Components
- Customer Support

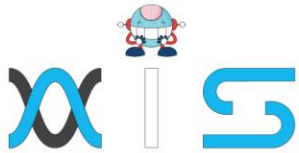
Lesson 02: Introduction to Docker

- Docker Introduction
- Docker Engine
- Docker Properties
- Installation of Docker Community Edition
- Assisted practice: Install, Upgrade, and Uninstall Docker CE for Linux
- Assisted practice: Configure Docker Daemon to Start on Boot
- Docker: Architecture
- Assisted Practice: Images and Containers

Lesson 03: Image Creation, Management, and Registry

- Images
- Containers
- Service
- Overview and Instructions
- Assisted Practice: Create a Docker Image
- Layers of Images
- Flattening
- Docker Commit
- Tag an Image
- Assisted Practice: Image Tagging

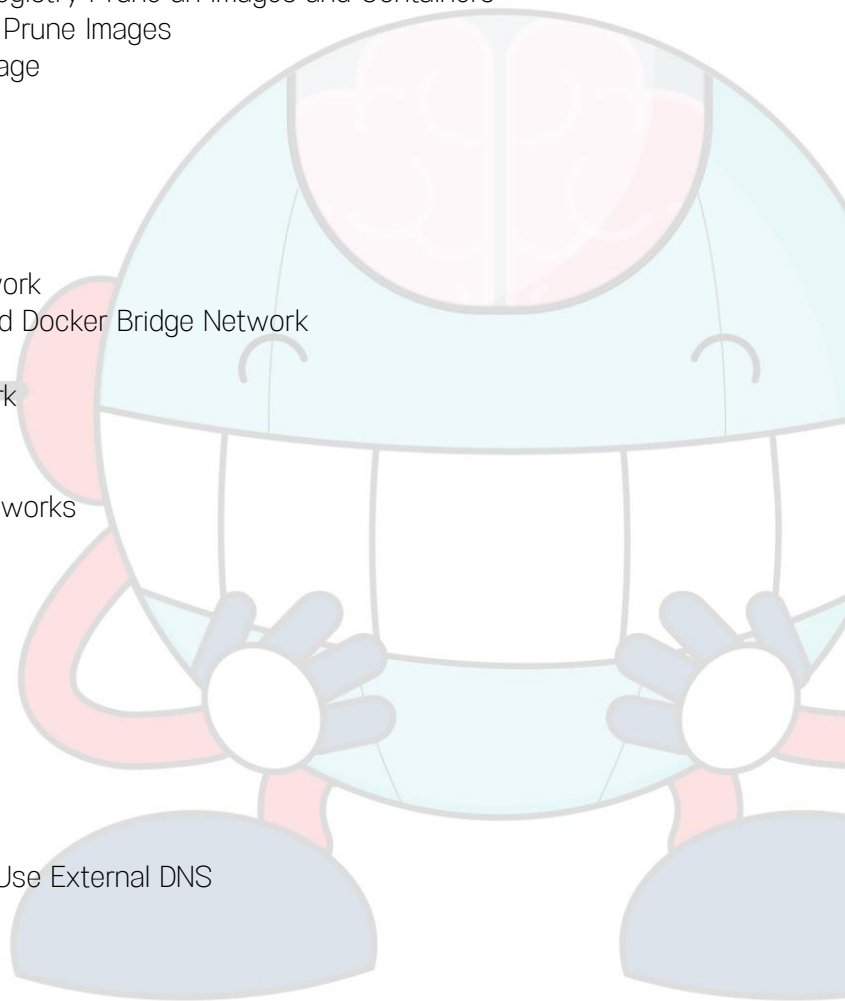


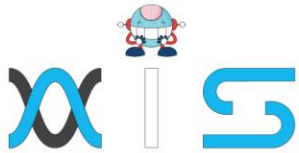


- Filter and Format
- Basic Commands
- The copy-on-write (COW) Strategy
- Registry
- Repositories
- Private Repositories
- Docker Push, Content Trust, and Pull
- Assisted Practice: Deploy a registry
- Assisted Practice: Configure a registry
- Assisted Practice: Login to a registry
- Assisted Practice: Push an Image to Docker Hub
- Assisted Practice: Push an image to a registry Prune an Images and Containers
- Assisted Practice: Inspect, Remove and Prune Images
- Assisted Practice: Pull and Delete an Image

Lesson 04 - Networking

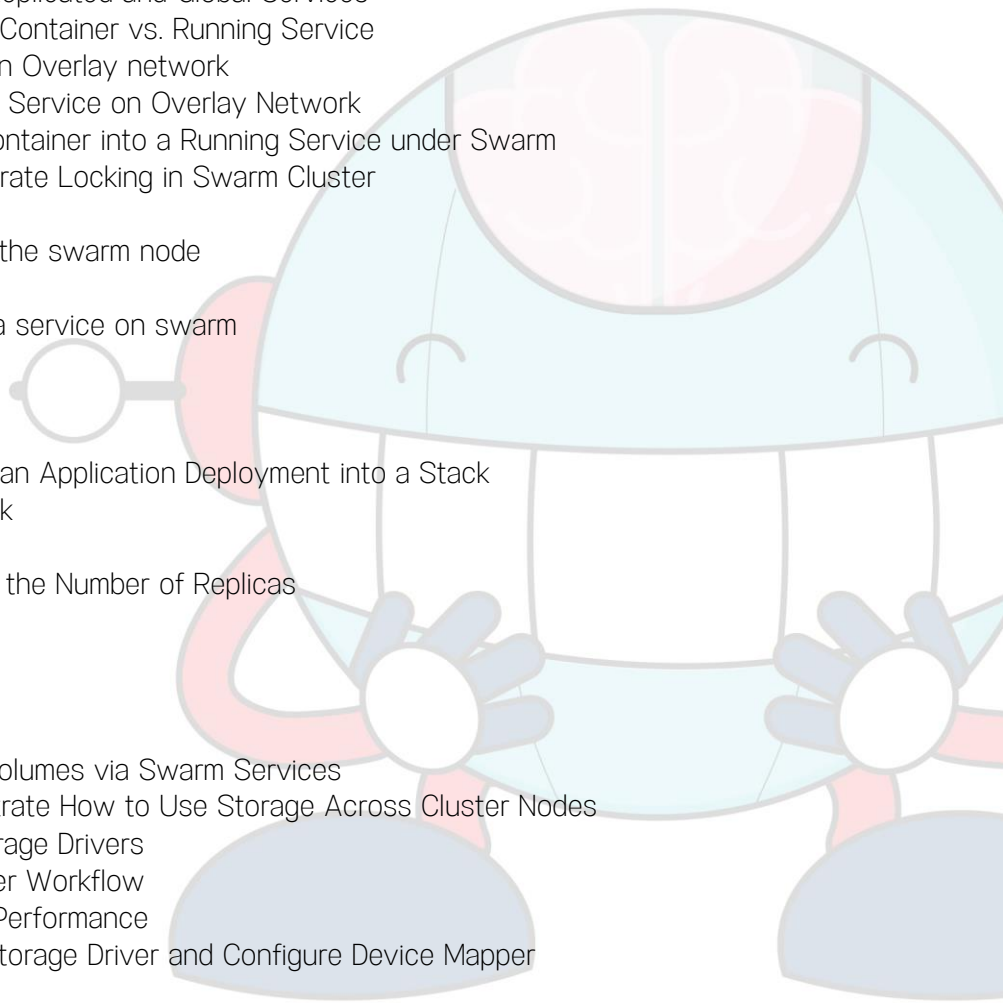
- Network Architecture
- Bridge networks
- Assisted Practice: Create a Bridge Network
- Assisted Practice: Create a User-Defined Docker Bridge Network
- Host networking
- Assisted practice: Create a Host network
- Overlay networks
- Macvlan networks
- Assisted practice: Create a Macvlan networks
- None Network
- Prune Network
- Container networking model
- Container Networking
- Use Cases of Network Drivers
- Identifying Ports
- Publishing Ports
- Assisted Practice: Publishing Ports
- Traffic
- Assisted Practice: Configure Docker to Use External DNS
- Docker
- Link Nodes





Lesson 05 - Orchestration

- Container: Overview
- Services and types (Replicated and global)
- Tasks
- Swarm
- Nodes
- Manager nodes
- Worker nodes
- Assisted practice: Set Up Swarm Cluster with Manager and Worker Nodes
- Assisted practice: Join nodes to swarm
- Assisted Practice: Create Replicated and Global Services
- Assisted practice: Running Container vs. Running Service
- Assisted practice: Create an Overlay network
- Assisted practice: Deploy a Service on Overlay Network
- Assisted practice: Run a Container into a Running Service under Swarm
- Assisted practice: Demonstrate Locking in Swarm Cluster
- Drain swarm node
- Assisted practice: Draining the swarm node
- Docker Inspect
- Assisted practice: Inspect a service on swarm
- Compose
- Compose: Configuration
- Docker stack deploy
- Assisted practice: Convert an Application Deployment into a Stack
- Manipulate services in stack
- Scaling
- Assisted practice: Increase the Number of Replicas
- Persistent Storage
- Volumes
- Bind Mounts
- tmpfs Mounts
- Assisted practice: Mount Volumes via Swarm Services
- Assisted Practice: Demonstrate How to Use Storage Across Cluster Nodes
- Prune Volumes Docker Storage Drivers
- DeviceMapper DeviceMapper Workflow
- DeviceMapper and Docker Performance
- Assisted Practice: Select Storage Driver and Configure Device Mapper
- Graph Driver

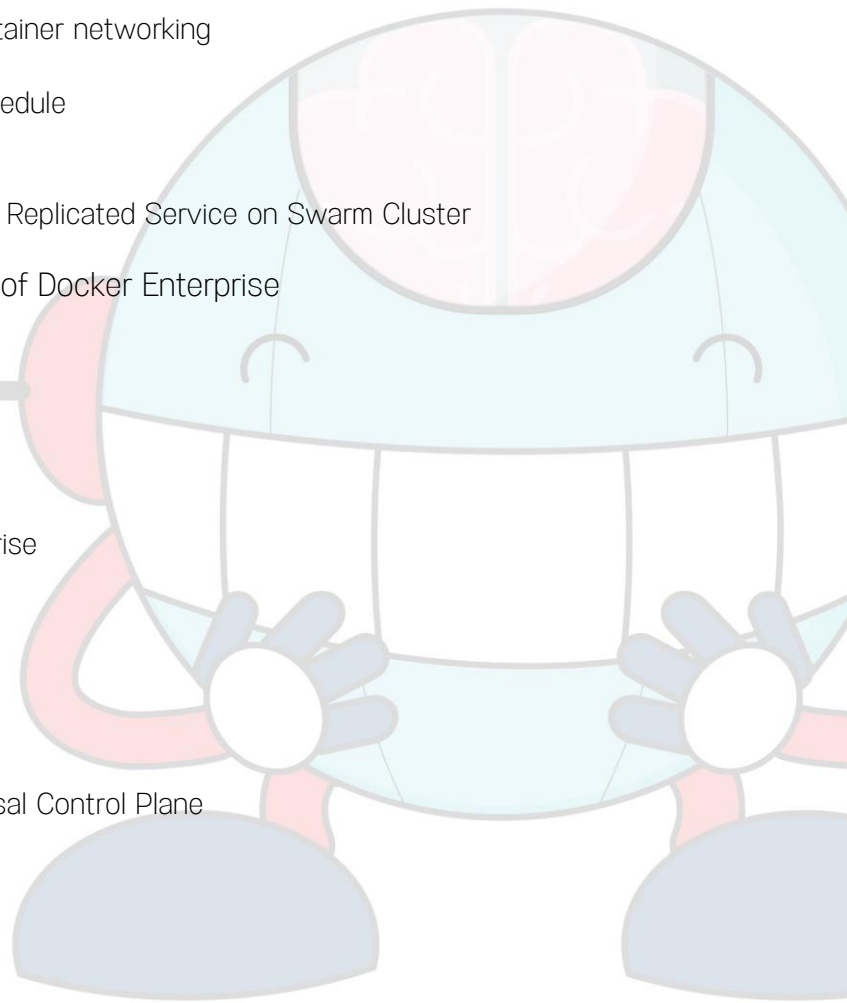




- Labels
- Assisted practice: Apply Node Labels, Inspect the Labels, and Filter Swarm Nodes by Label
- Quorum of managers
- Recovering from Losing the Quorum
- Services with template
- Assisted practice: Usage of Templates
- Logs
- Assisted practice: Troubleshoot a Service that Is Unable to Deploy
- Logging Drivers
- Configure Logging Drivers
- Assisted Practice: Logging Drivers
- Network Troubleshooting
- Assisted Practice: Troubleshooting container networking
- Backup: Swarm Backup: Restore
- Assisted Practice: Set up a Backup Schedule
- Swarm Disaster Recovery
- Containerizing Legacy Application
- Creating a Docker Image and Creating a Replicated Service on Swarm Cluster

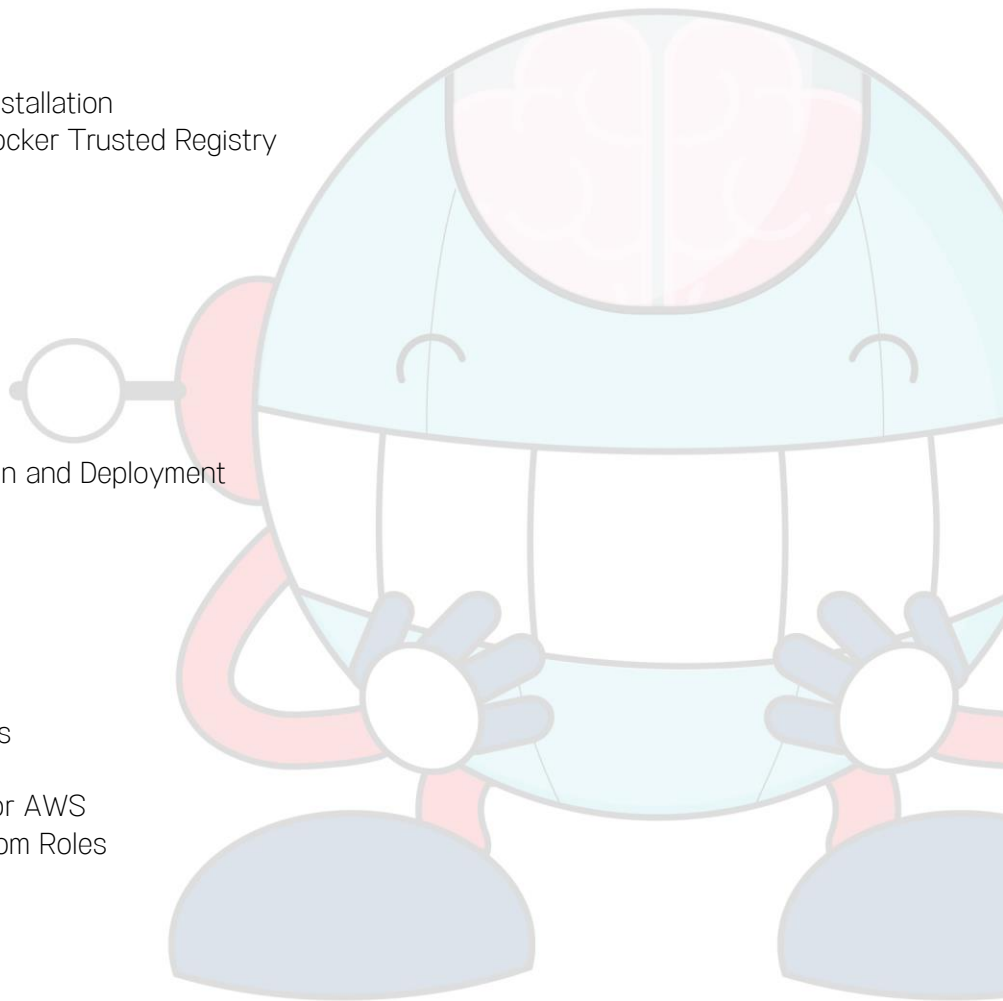
Lesson 06 - Installation and Configuration of Docker Enterprise

- Docker Enterprise: Overview
- Docker Enterprise : Features
- Kubernetes Services
- Orchestration
- Security Features
- Assisted Practice: Install Docker Enterprise
- Installation Using Package
- Uninstall
- Post-Installation Procedures
- UCP: Overview
- UCP: Architecture
- Interaction with UCP
- Assisted Practice: Install Docker Universal Control Plane
- Joining Manager Nodes
- Load Balancing UCP and DTR
- Configuring Load Balancer
- Deploying Load Balancer
- Deploy Swarm Service Using UCP





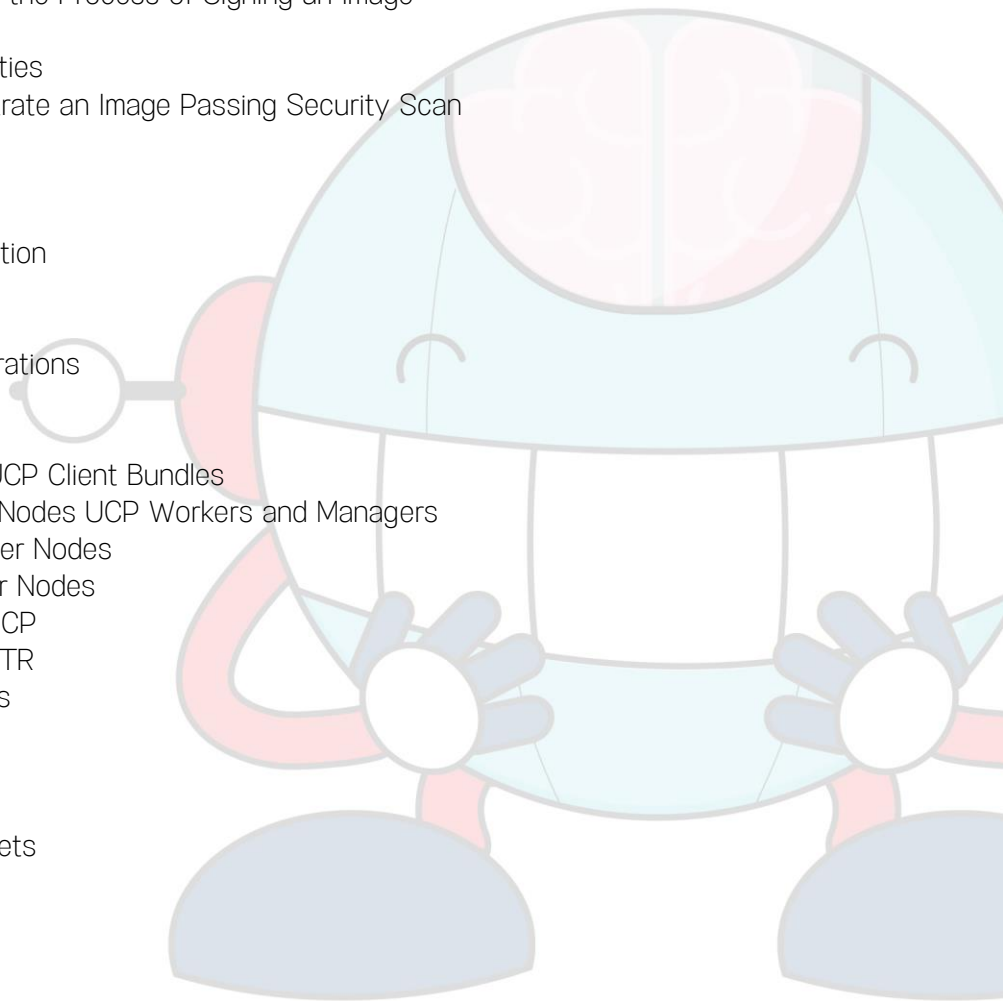
- Access Control
- Grant Subject
- Assisted Practice: Create and Manage Teams and Users
- Role
- Collection
- Create a Grant
- Service Deployment
- Grant Composition
- Docker Trusted Registry: Overview
- Architecture
- DTR Components
- Networks
- Volumes
- Image Storage
- Installation Requirements Installation
- Assisted Practice: Install Docker Trusted Registry
- High Availability
- DTR Failure Tolerance
- Sizing DTR Installation
- Add Replicas
- Remove Replicas
- Load Balancer
- Configure Load Balancer
- Health Check of Replicas
- Load Balancer: Configuration and Deployment
- UCP: Backup and restore
- DTR: Backup and restore
- UCP Disaster Recovery
- DTR Disaster Recovery
- Deployment Options
- Prerequisites
- Mediums and Configurations
- Docker for AWS
- Docker Enterprise Edition for AWS
- Creating a Grant with Custom Roles

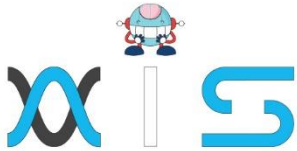




Lesson 07 - Security

- Docker Security
- Default Engine Security
- Namespace
- Control Groups
- Docker Daemon Attack Surface
- Docker Content Trust
- Sign an Image
- Docker Content Trust Signature Verification
- Sign Images that UCP Can Trust
- Assisted Practice: Describe the Process of Signing an Image
- Vulnerabilities
- Scan Images for Vulnerabilities
- Assisted Practice: Demonstrate an Image Passing Security Scan
- Client Bundle
- Features of UCP
- Integrate UCP with LDAP
- Configure the LDAP Integration
- LDAP Enabled
- LDAP Server
- LDAP User Search Configurations
- LDAP Test Login
- LDAP Sync Configuration
- Assisted Practice: Create UCP Client Bundles
- UCP: Worker and Manager Nodes UCP Workers and Managers
- UCP Components in Manager Nodes
- UCP Components in Worker Nodes
- External Certificates with UCP
- External Certificates with DTR
- Configuration of Certificates
- Swarm Security
- Roles
- Secrets
- How Docker Manages Secrets
- Docker Secret Commands





AIS

With the rising demand in scalable technology, AIS provides tailored goal-setting based on your organization's needs and expectations. With products geared towards the growing needs of your organization's customers and employees, AIS has innovative and value-driven solutions.

Learning Partners



SAS Management, Inc.

SAS Management, Inc. has been a leader in the training, certification and consulting services industry in the Philippines. With offices in Makati, Ortigas and Cebu, Philippines, the company has been the top training and consulting company for over 9 years. In its years of existence, it has provided certificates to over 100,000 professionals including 10,000 participants in the 160+ courses that have been conducted just during the 2020-2021 pandemic alone. The most sought-after courses being offered are ITIL, Project Management Professional (PMP)®, COBIT 5, Six Sigma Yellow Belt, Six Sigma Green Belt, PRINCE2, and organizational skills, among others.



Simplilearn

Simplilearn, based in California and India, is the world's #1 online bootcamp and one of the world's the leading certification and training providers. Simplilearn trained over 2,000,000 professionals with 2,000+ trainers and provides over 400 different courses.

Technology Partner



Freshworks

With over 40,000 customers, Freshworks is a business solutions software provider with products ranging from IT helpdesk and service desk, customer relationship management, live chat, marketing automation, phone system, and HR.

Partners & Affiliates



PECB

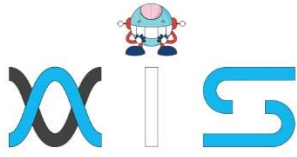
SDI Service Desk Institute

EC-COUNCIL

MIT Massachusetts Institute of Technology



P PURDUE UNIVERSITY



The program presented, as well as a wide range of programs are products of the partnership of AIS, SAS Management, Inc., and Simplilearn. With a common goal of providing the best practice of facilitating learning with an array of choices available in the online platform in this time of digitization.

Office Addresses

NXT AIS Inc.

Juan Antonio III Building
315 Maysilo Circle, Mandaluyong, Philippines

SAS Management, Inc.

- **Head Office**

Unit 1602 Cityland 10 Tower
2 6815 HV dela Costa cor Ayala Avenue
Makati City, Philippines

- **Branch Office**

Unit 204 Villa Building
Jupiter St. corner Makati Avenue
Makati City, Philippines

- **Branch Office**

Room 201 2nd floor OLS Building
443 Gorordo Avenue., Brgy. Kamputhaw
Cebu City, Philippines

- **Branch Office**

Malaysia - SAS Management
Sdn Bhd 6f-16, IOI Business Park,
Persiaran Puchong Jaya
47170, Selangor

Simplilearn

- **Simplilearn Americas, Inc Pvt Ltd.**

201 Spear Street, Suite 1100,
San Francisco, CA 94105 United States

- **Simplilearn Solutions Pte Ltd.**

NALANDA 53/1 C, Manoj Arcade, 24th Main Rd,
Sector 2, HSR Layout, Bengaluru
560102, Karnataka, India.

- **Simplilearn Singapore**

#14-302, The Plaza, 7500A Beach Rd,
Singapore 199591