

Designing Microsoft Azure Infrastructure Solutions (AZ-305) Training Course

Course Outline





Course Overview:

This Microsoft Azure certification training establishes you as an expert Azure Solutions Architect and helps you ace the AZ-305 exam. You will learn how to determine workload requirements, design for identity and security, architect a data platform, create continuity, conduct migrations, and integrate with APIs.

Course Highlights:

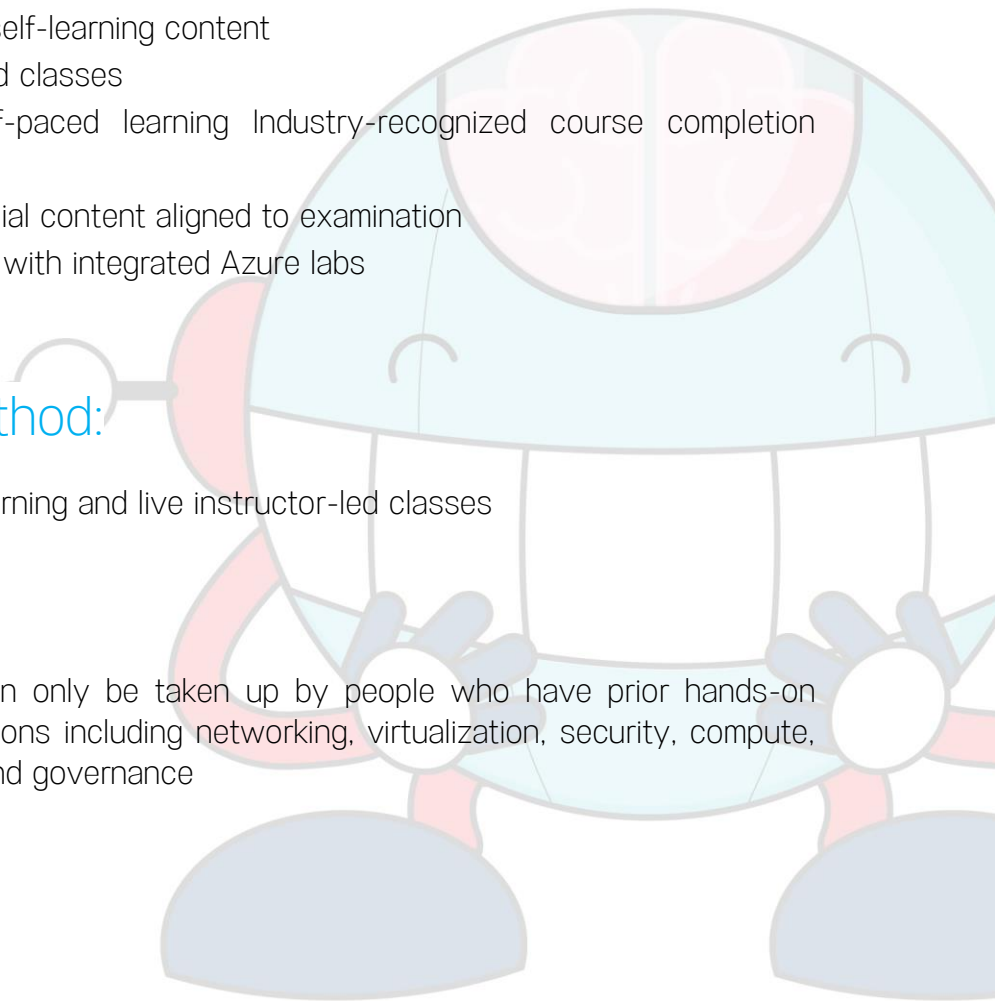
- 4.9 hours of online self-paced learning
- 10 hours of high-quality self-learning content
- 40 hours of instructor-led classes
- Lifetime access to self-paced learning Industry-recognized course completion certificate
- Access to Microsoft official content aligned to examination
- Practice lab and projects with integrated Azure labs
- Exam voucher included

Course Delivery Method:

Online Bootcamp: Online self-learning and live instructor-led classes

Prerequisites:

This Azure AZ-305 training can only be taken up by people who have prior hands-on experience in various IT operations including networking, virtualization, security, compute, storage, billing and budgeting, and governance





Who Will Benefit:

This Microsoft Certified Azure Architect Design training course is ideal for IT professionals, cloud solutions architects, experienced Azure administrators and developers, and DevOps professionals

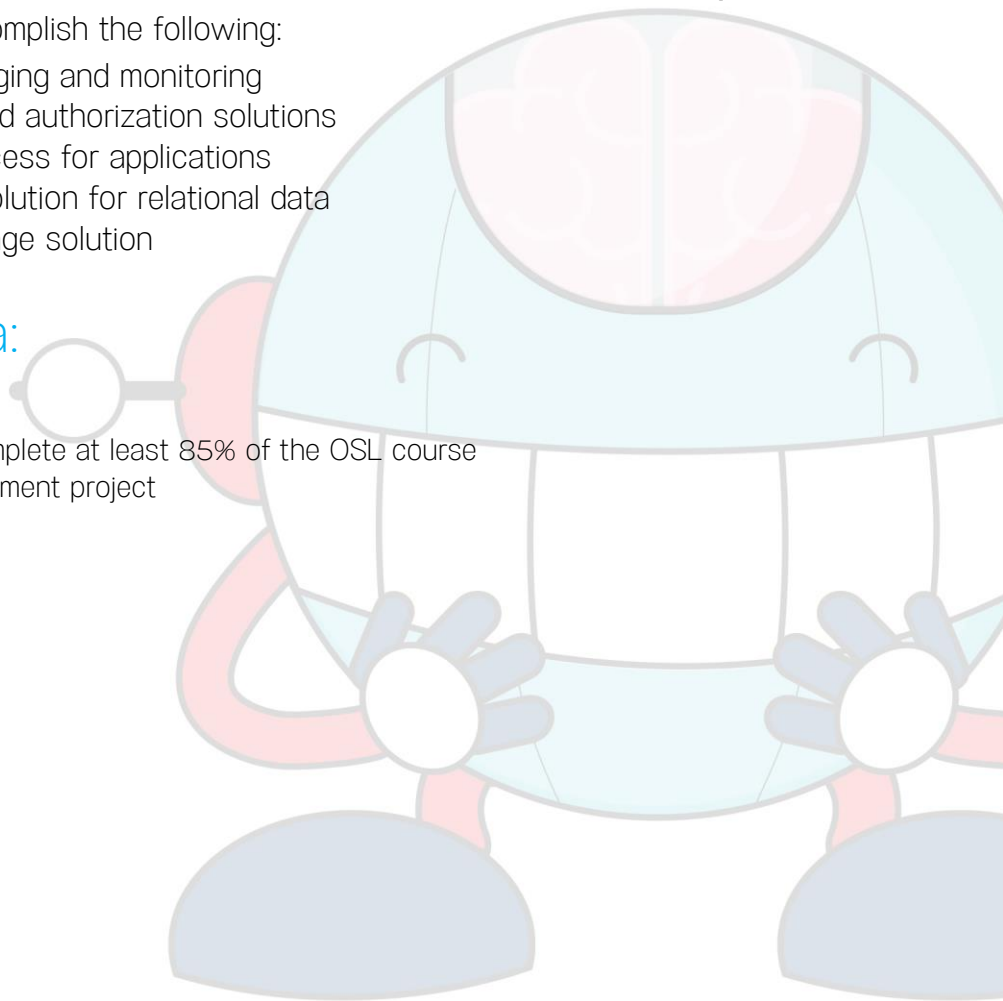
Key Learning Outcomes:

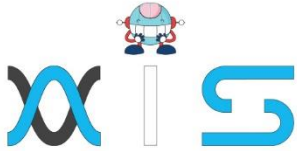
When you complete this **Microsoft Azure Infrastructure Solutions (AZ-305) Training course**, you will be able to accomplish the following:

- Design a solution for logging and monitoring
- Design authentication and authorization solutions
- Design identities and access for applications
- Design a data storage solution for relational data
- Recommend a data storage solution

Certification Criteria:

- Attend 1 LVC Class OR complete at least 85% of the OSL course
- Successfully pass 1 assessment project





AIS

With the rising demand in scalable technology, AIS provides tailored goal-setting based on your organization's needs and expectations. With products geared towards the growing needs of your organization's customers and employees, AIS has innovative and value-driven solutions.

Learning Partners



SAS Management, Inc.

SAS Management, Inc. has been a leader in the training, certification and consulting services industry in the Philippines. With offices in Makati, Ortigas and Cebu, Philippines, the company has been the top training and consulting company for over 9 years. In its years of existence, it has provided certificates to over 100,000 professionals including 10,000 participants in the 160+ courses that have been conducted just during the 2020-2021 pandemic alone. The most sought-after courses being offered are ITIL, Project Management Professional (PMP)®, COBIT 5, Six Sigma Yellow Belt, Six Sigma Green Belt, PRINCE2, and organizational skills, among others.



Simplilearn

Simplilearn, based in California and India, is the world's #1 online bootcamp and one of the world's the leading certification and training providers. Simplilearn trained over 2,000,000 professionals with 2,000+ trainers and provides over 400 different courses.

Technology Partner



Freshworks

With over 40,000 customers, Freshworks is a business solutions software provider with products ranging from IT helpdesk and service desk, customer relationship management, live chat, marketing automation, phone system, and HR.

Partners & Affiliates



PECB

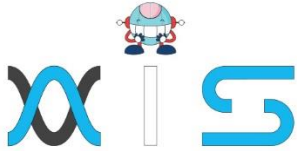
SDI Service Desk Institute

EC-COUNCIL

MIT Massachusetts Institute of Technology



P PURDUE UNIVERSITY



The program presented, as well as a wide range of programs are products of the partnership of AIS, SAS Management, Inc., and Simplilearn. With a common goal of providing the best practice of facilitating learning with an array of choices available in the online platform in this time of digitization.

Office Addresses

NXT AIS Inc.

Juan Antonio III Building
315 Maysilo Circle, Mandaluyong, Philippines

SAS Management, Inc.

- **Head Office**

Unit 1602 Cityland 10 Tower
2 6815 HV dela Costa cor Ayala Avenue
Makati City, Philippines

- **Branch Office**

Unit 204 Villa Building
Jupiter St. corner Makati Avenue
Makati City, Philippines

- **Branch Office**

Room 201 2nd floor OLS Building
443 Gorordo Avenue., Brgy. Kamputhaw
Cebu City, Philippines

- **Branch Office**

Malaysia - SAS Management
Sdn Bhd 6f-16, IOI Business Park,
Persiaran Puchong Jaya
47170, Selangor

Simplilearn

- **Simplilearn Americas, Inc Pvt Ltd.**

201 Spear Street, Suite 1100,
San Francisco, CA 94105 United States

- **Simplilearn Solutions Pte Ltd.**

NALANDA 53/1 C, Manoj Arcade, 24th Main Rd,
Sector 2, HSR Layout, Bengaluru
560102, Karnataka, India.

- **Simplilearn Singapore**

#14-302, The Plaza, 7500A Beach Rd,
Singapore 199591