

# CERTIFIED CHIEF INFORMATION SECURITY MANAGER (CISM®)

Course Outline





## Program Overview

Certified Information Security Manager (CISM®) is a key certification for information security professionals who manage, design, oversee, and assess enterprise information security. This CISM certification course is closely aligned with ISACA's best practices and will help you learn about IT security systems, including risk analysis and the best ways to mitigate security risks.

## Program Features

- 45+ hours of online self-paced learning
- Lifetime access to self-paced learning
- Industry-recognized course completion certificate
- 16 CPEs offered

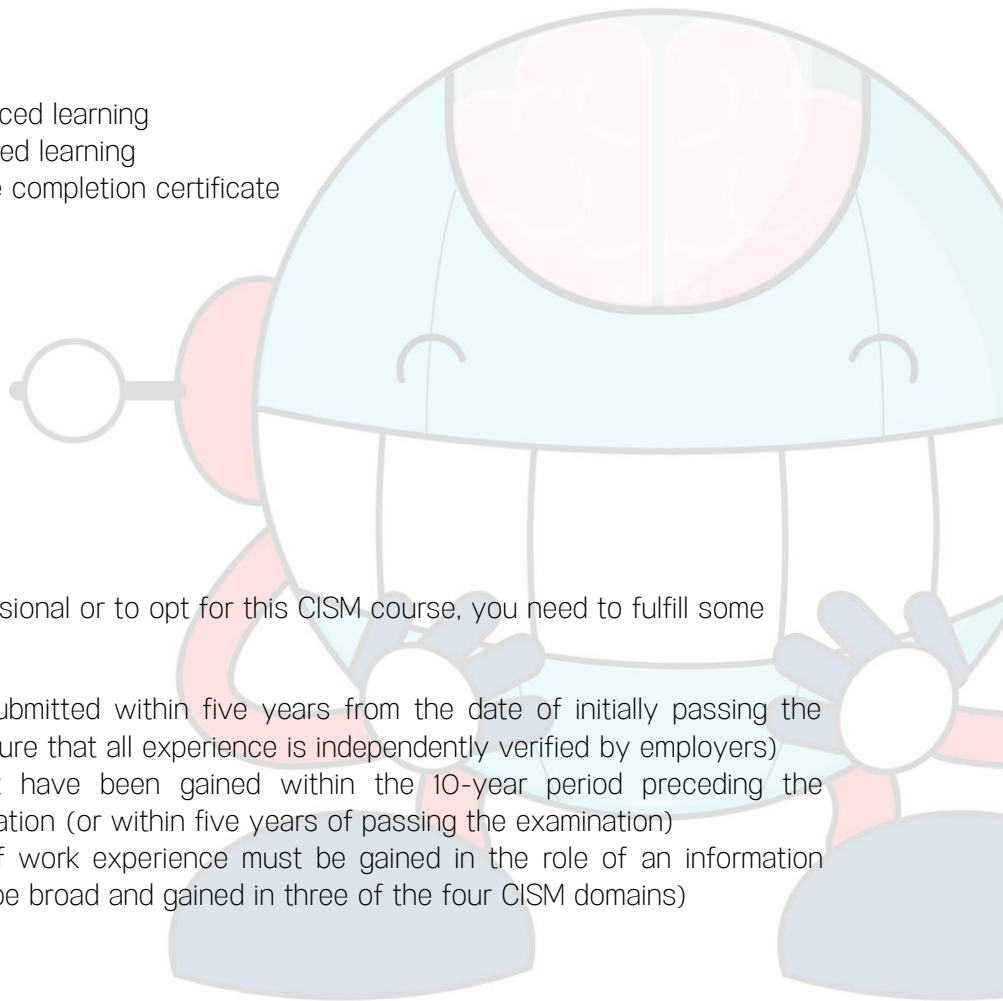
## Delivery Mode

Online self-learning

## Prerequisites

To become a CISM certified professional or to opt for this CISM course, you need to fulfill some criteria, including:

- A completed application submitted within five years from the date of initially passing the examination (you must ensure that all experience is independently verified by employers)
- Relevant experience must have been gained within the 10-year period preceding the application date for certification (or within five years of passing the examination)
- Three of the five years of work experience must be gained in the role of an information security manager (it must be broad and gained in three of the four CISM domains)





## Target Audience

The CISM certification is a globally recognized professional requirement in the IT security domain. This certification is best suited for security consultants and managers, IT directors and managers, security auditors and architects, security system engineers, CISOs, information security managers, IT consultants, and risk officers.

## Key Learning Outcomes

By the end of this online Certified Information Security Manager (CISM®) training course, you will have full, working knowledge of:

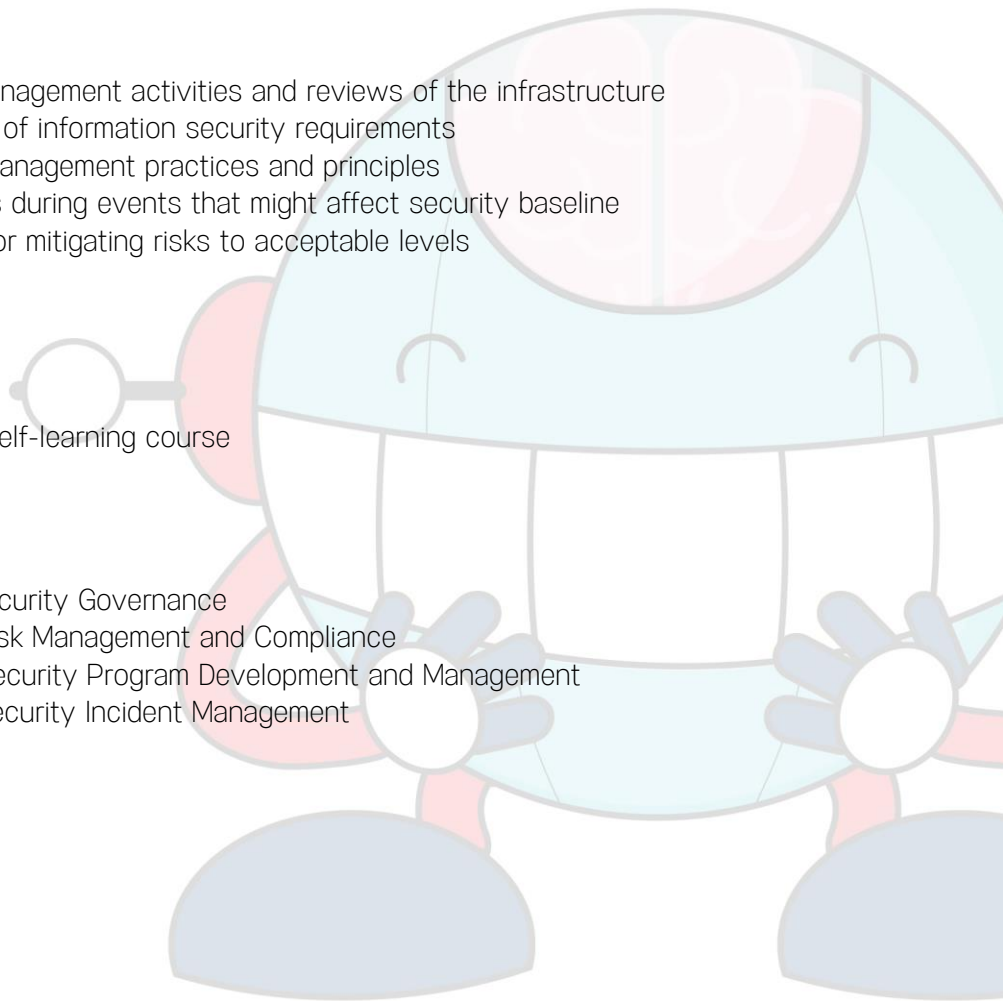
- Information security management activities and reviews of the infrastructure
- Plans and performance of information security requirements
- Life-cycle-based risk management practices and principles
- Risk management steps during events that might affect security baseline
- Analyzing techniques for mitigating risks to acceptable levels

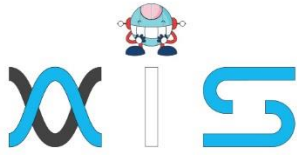
## Certification Details & Criteria:

- Complete 85% of the self-learning course

## Course Curriculum:

- **Domain 01** - Information Security Governance
- **Domain 02** - Information Risk Management and Compliance
- **Domain 03** - Information Security Program Development and Management
- **Domain 04** - Information Security Incident Management





## AIS

With the rising demand in scalable technology, AIS provides tailored goal-setting based on your organization's needs and expectations. With products geared towards the growing needs of your organization's customers and employees, AIS has innovative and value-driven solutions.

### Learning Partners



#### SAS Management, Inc.

Premiere training and consulting services company, SAS Management, Inc. has been in the industry for a decade. SAS Management, inc. focuses on creating value in every learning and consulting experience by providing the best possible output – whether in a virtual classroom setup, e-learning, or face-to-face. SAS Management, Inc. is the leading training and certification provider for ITIL, Project Management Professional, ISO certifications, PRINCE2, SDI Service Desk Analyst and Manager, Agile, and a host of many programs and courses.



#### Simplilearn

Tagged as the “World’s #1 Online Bootcamp”, Simplilearn provides online education and in-house training for professional certification courses. Founded in 2010, Simplilearn offers more than 100 programs, helping professionals reach their learning potentials needed to work in the digital economy.

### Technology Partner



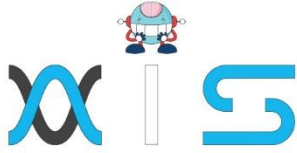
#### Freshworks

With over 40,000 customers, Freshworks is a business solutions software provider with products ranging from IT helpdesk and service desk, customer relationship management, live chat, marketing automation, phone system, and HR.

### Partners & Affiliates







*The program presented, as well as a wide range of programs are products of the partnership of AIS, SAS Management, Inc., and Simplilearn. With a common goal of providing the best practice of facilitating learning with an array of choices available in the online platform in this time of digitization.*

## Office Addresses

### AI Services

Juan Antonio III Building  
315 Maysilo Circle, Mandaluyong, Philippines

### SAS Management, Inc.

- **Head Office**

Unit 1602 Cityland 10 Tower  
2 6815 HV dela Costa cor Ayala Avenue  
Makati City, Philippines

- **Branch Office**

Unit 204 Villa Building  
Jupiter St. corner Makati Avenue  
Makati City, Philippines

- **Branch Office**

Room 201 2nd floor OLS Building  
443 Gorordo Avenue., Brgy. Kamputhaw  
Cebu City, Philippines

- **Branch Office**

Malaysia - SAS Management  
Sdn Bhd 6f-16, IOI Business Park,  
Persiaran Puchong Jaya  
47170, Selangor

### Simplilearn

- **Simplilearn Americas, Inc  
Pvt Ltd.**

201 Spear Street, Suite 1100,  
San Francisco, CA 94105 United States

- **Simplilearn Solutions  
Pte Ltd.**

NALANDA 53/1 C, Manoj Arcade, 24th Main Rd,  
Sector 2, HSR Layout, Bengaluru  
560102, Karnataka, India.

- **Simplilearn Singapore**

#14-302, The Plaza, 7500A Beach Rd,  
Singapore 199591