

AZURE CLOUD ARCHITECT

Course Outline





Program Overview:

This Azure Cloud Architect Master's Program offered by Simplilearn will help you to learn Azure applications and architecture along with the main principles of cloud computing and how they are implemented in Microsoft Azure. This program also focuses on Azure Cloud Architect technology solutions, implementing security and workloads in Azure, deploying and creating apps in Azure, and securing data in Azure.

Program Highlights

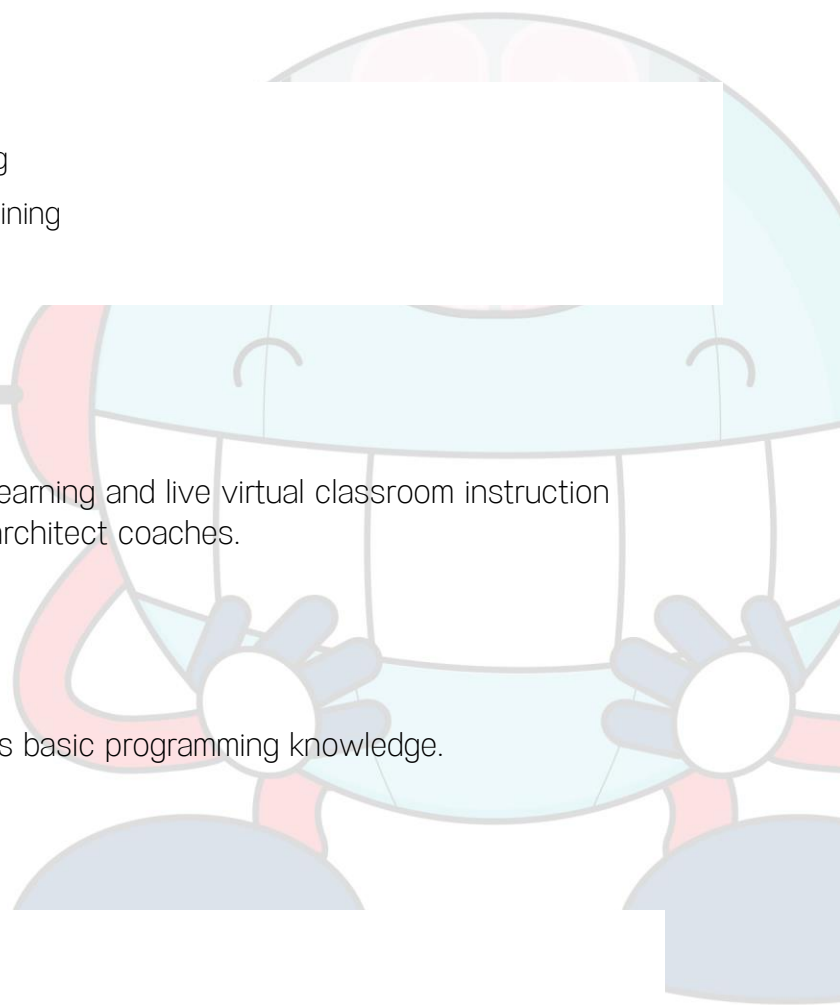
- 260+ hours of applied learning
- 62 hours of self-paced learning
- 200 hours of instructor-led training
- 20+ in-demand tools and skills

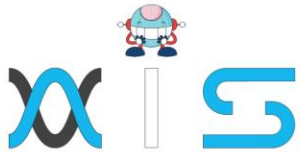
Program Delivery Method:

Online Bootcamp- Online self-paced video learning and live virtual classroom instruction conducted by the industry's leading cloud architect coaches.

Prerequisites:

This Azure Cloud Architect program requires basic programming knowledge.





Tools Covered:

- Azure Container Service
- Azure Functions
- Azure Cosmos DB
- Azure SQL Database
- Azure Resource Manager
- Azure IAM
- Azure Key Vault
- Azure Security Center
- Azure DNS
- Azure Disk Storage

Who Will Benefit:

The master's program is ideal for all who wish to enter the cloud computing industry. Learners in this program should ideally fit into the following:

- Graduates with little or no experience who are entering the job market
- Any professionals who are working in either technical or non-technical job roles who want to shift to cloud industry



Key Learning Outcomes :

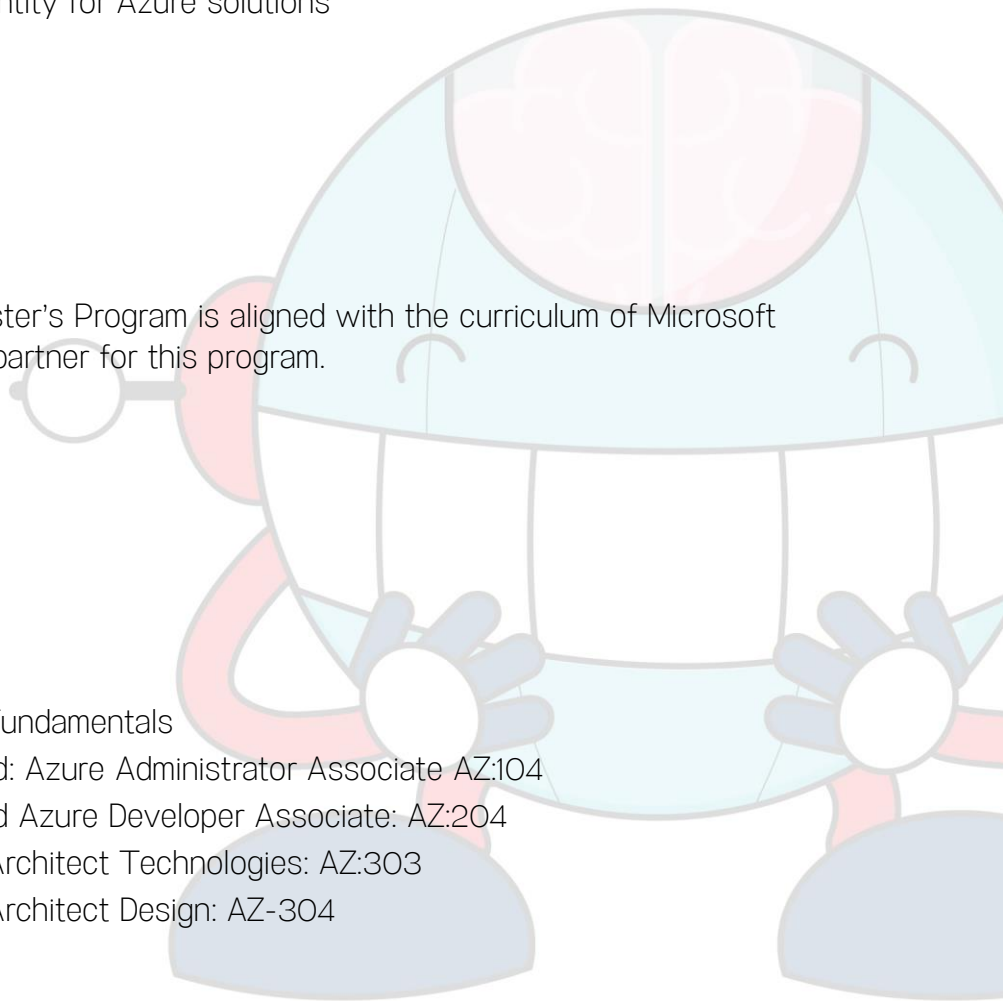
- Gain knowledge on the principles of cloud computing and learning how to deploy applications on Microsoft Azure
- Understand billing, configure role-based access control for users, and manage subscriptions
- Learn the configuration options for Azure App Service and App environments and implement use cases on Azure App Services
- Use Azure Powershell, CLI, and other tools to design an Azure App Service
- Manage security and identity for Azure solutions

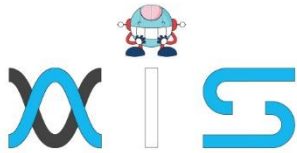
Accreditations:

This Azure Cloud Architect Master's Program is aligned with the curriculum of Microsoft Azure. We are a silver training partner for this program.

Learning Path:

- Microsoft Azure Fundamentals
- Microsoft Certified: Azure Administrator Associate AZ:104
- Microsoft Certified Azure Developer Associate: AZ:204
- Microsoft Azure Architect Technologies: AZ:303
- Microsoft Azure Architect Design: AZ-304





AIS

With the rising demand in scalable technology, AIS provides tailored goal-setting based on your organization's needs and expectations. With products geared towards the growing needs of your organization's customers and employees, AIS has innovative and value-driven solutions.

Learning Partners



SAS Management, Inc.

SAS Management, Inc. has been a leader in the training, certification and consulting services industry in the Philippines. With offices in Makati, Ortigas and Cebu, Philippines, the company has been the top training and consulting company for over 9 years. In its years of existence, it has provided certificates to over 100,000 professionals including 10,000 participants in the 160+ courses that have been conducted just during the 2020-2021 pandemic alone. The most sought-after courses being offered are ITIL, Project Management Professional (PMP)®, COBIT 5, Six Sigma Yellow Belt, Six Sigma Green Belt, PRINCE2, and organizational skills, among others.



Simplilearn

Simplilearn, based in California and India, is the world's #1 online bootcamp and one of the world's the leading certification and training providers. Simplilearn trained over 2,000,000 professionals with 2,000+ trainers and provides over 400 different courses.

Technology Partner



Freshworks

With over 40,000 customers, Freshworks is a business solutions software provider with products ranging from IT helpdesk and service desk, customer relationship management, live chat, marketing automation, phone system, and HR.

Partners & Affiliates

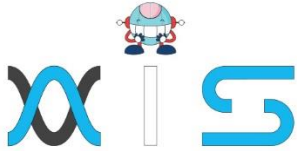


PECB

SDI Service Desk Institute

EC-COUNCIL





The program presented, as well as a wide range of programs are products of the partnership of AIS, SAS Management, Inc., and Simplilearn. With a common goal of providing the best practice of facilitating learning with an array of choices available in the online platform in this time of digitization.

Office Addresses

NXT AIS Inc.

Juan Antonio III Building
315 Maysilo Circle, Mandaluyong, Philippines

SAS Management, Inc.

- **Head Office**

Unit 1602 Cityland 10 Tower
2 6815 HV dela Costa cor Ayala Avenue
Makati City, Philippines

- **Branch Office**

Unit 204 Villa Building
Jupiter St. corner Makati Avenue
Makati City, Philippines

- **Branch Office**

Room 201 2nd floor OLS Building
443 Gorordo Avenue., Brgy. Kamputhaw
Cebu City, Philippines

- **Branch Office**

Malaysia - SAS Management
Sdn Bhd 6f-16, IOI Business Park,
Persiaran Puchong Jaya
47170, Selangor

Simplilearn

- **Simplilearn Americas, Inc Pte Ltd.**

201 Spear Street, Suite 1100,
San Francisco, CA 94105 United States

- **Simplilearn Solutions Pte Ltd.**

NALANDA 53/1 C, Manoj Arcade, 24th Main Rd,
Sector 2, HSR Layout, Bengaluru
560102, Karnataka, India.

- **Simplilearn Singapore**

#14-302, The Plaza, 7500A Beach Rd,
Singapore 199591