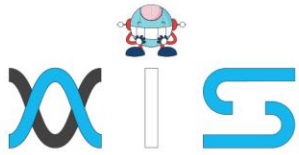


ANSIBLE FOUNDATION TRAINING COURSE

Course Outline





Course Overview:

This Ansible Online training course for beginners will help you get started with the installation of Ansible 2.0 and gradually guide you towards creating your own playbooks, managing an entire cloud region, and configuring network devices across Linux or Windows operating systems.

Key Features:

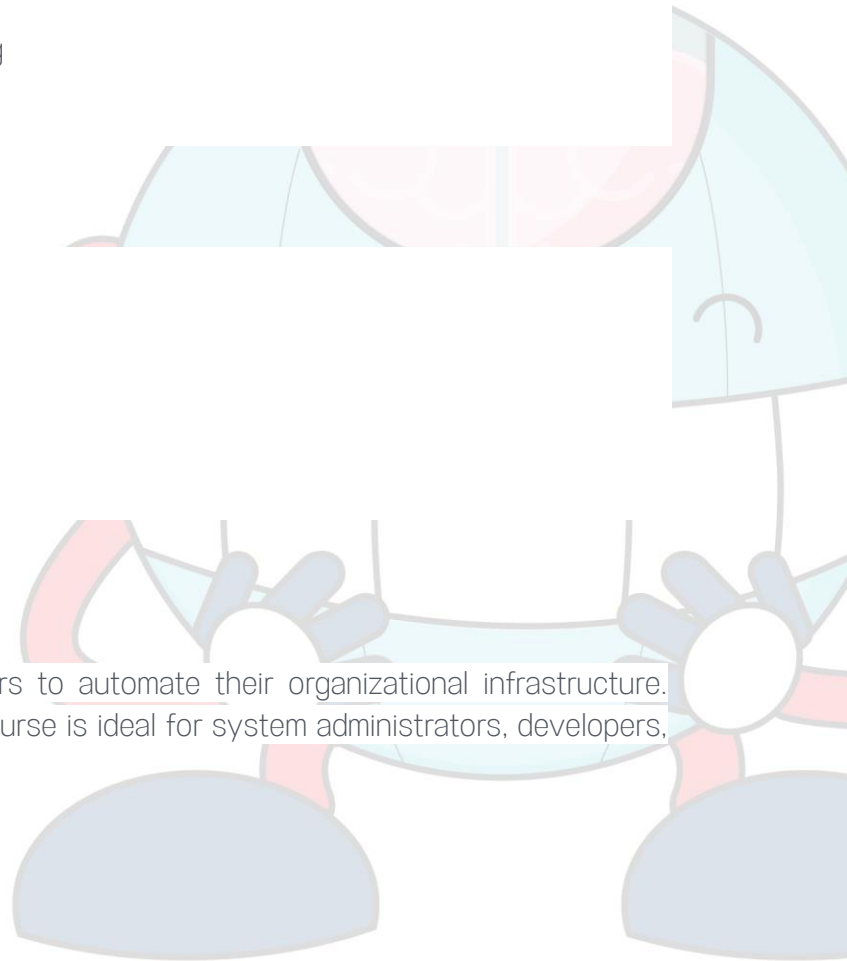
- Coverage of modules, playbooks, roles, and variables
- Overview of loops, blocks, strategies, and galaxies
- Ansible course completion certificate
- Lifetime access to self-paced learning

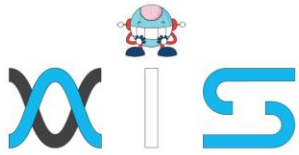
Skills Covered:

- Ansible 2 basics
- Ansible 2 installation
- Ansible configuration
- Playbooks
- Loops blocks amp strategies
- Ansible 2 in the cloud

Who Will Benefit:

This Ansible online training enables beginners to automate their organizational infrastructure. Everybody is eligible, although the Ansible course is ideal for system administrators, developers, and automation engineers.





Prerequisites:

Learners need to possess an undergraduate degree or a high school diploma. Need access to a Linux system to set Ansible up and prior exposure to Linux system administration.

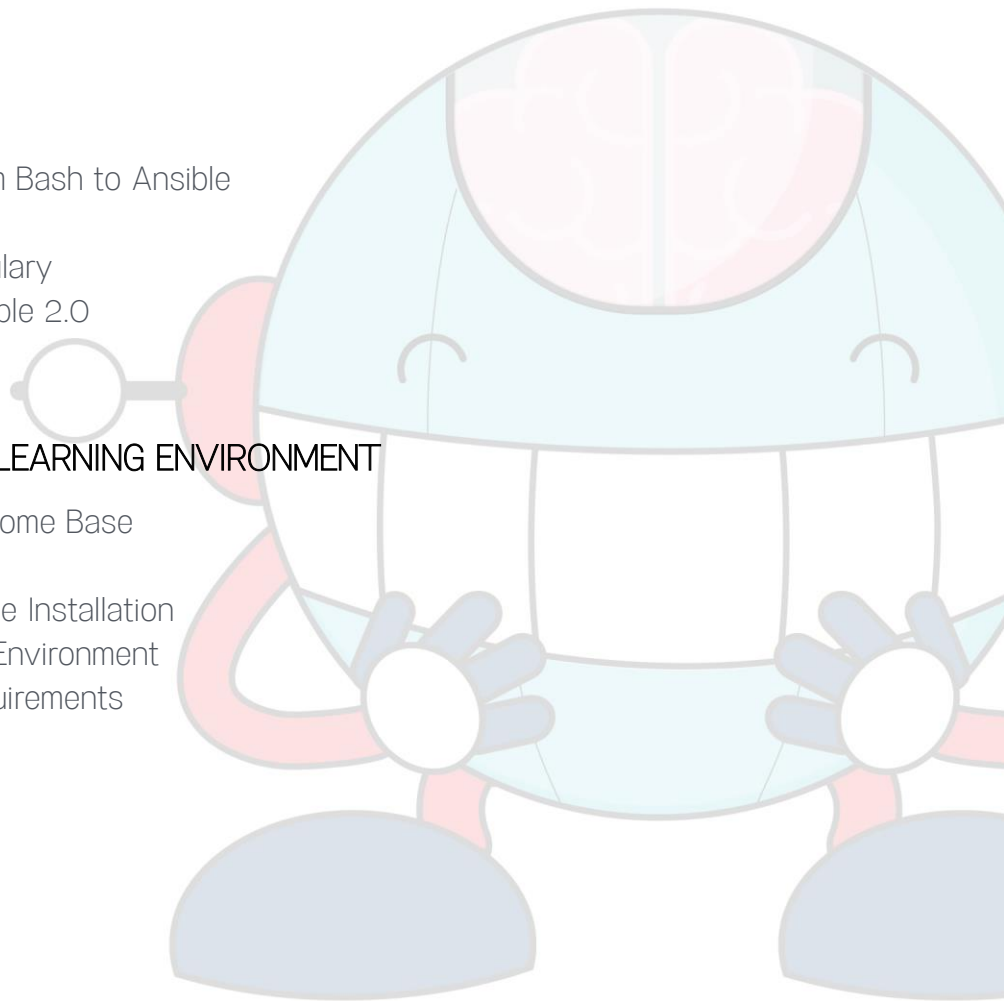
Course Agenda:

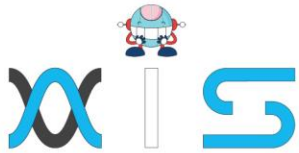
Lesson 1: ANSIBLE 2 – WHAT'S IT ALL ABOUT?

- 1.1 The Course Overview
- 1.2 What Is Ansible?
- 1.3 Why Ansible?
- 1.4 Demonstration – From Bash to Ansible
- 1.5 Course Layout
- 1.6 Basic Ansible Vocabulary
- 1.7 New Features in Ansible 2.0

Lesson 2: SETTING UP THE LEARNING ENVIRONMENT

- 2.1 Creating an Ansible Home Base
- 2.2 Installing Ansible
- 2.3 Bleeding-Edge Ansible Installation
- 2.4 Setting up our Test Environment
- 2.5 Target Machine Requirements





Lesson 3: JUMPING INTO ANSIBLE 2

- 3.1 Ansible Configuration Hierarchy
- 3.2 Ansible Hosts Inventory File
- 3.3 Ad-Hoc Commands
- 3.4 Introduction to Playbooks
- 3.5 Playbook Structure
- 3.6 Introduction to Modules
- 3.7 Common Modules
- 3.8 Variables and Facts

Lesson 4: A REAL-WORLD PLAYBOOK

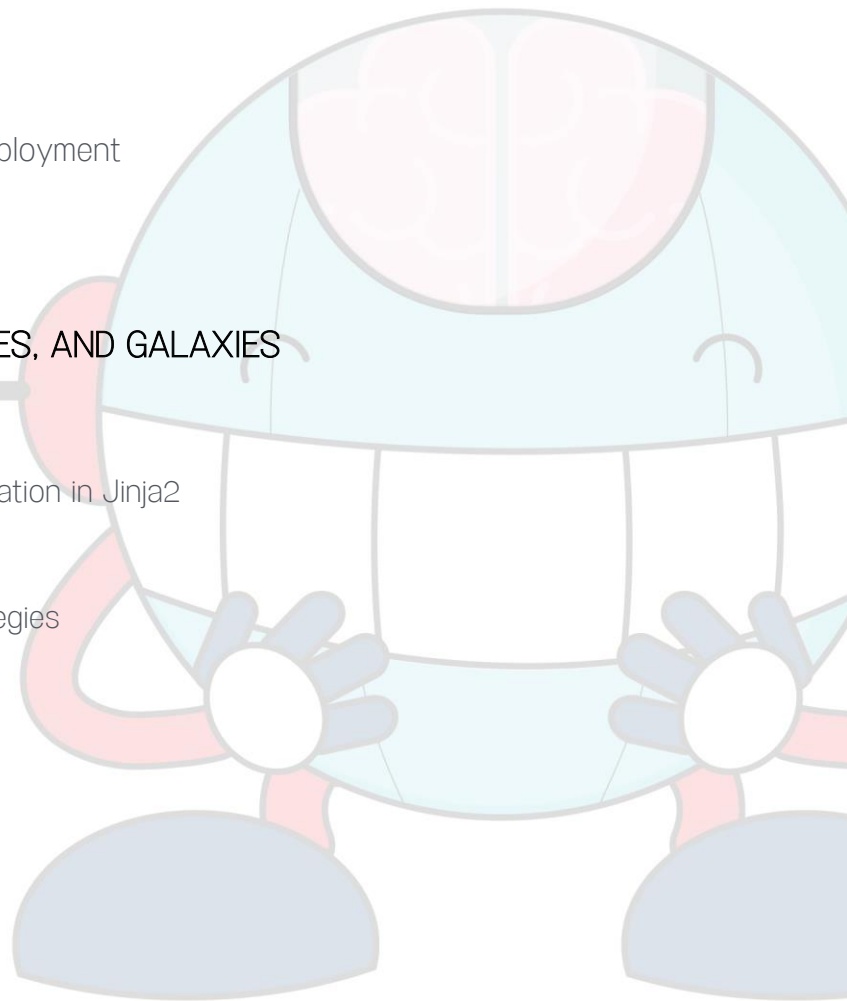
- Real-Life Playbook: Matter-most Deployment
- 4.2 Real-Life Playbook: Walkthrough

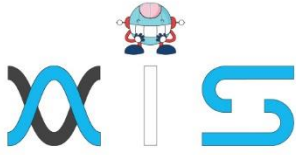
Lesson 5: LOOPS, BLOCKS, STRATEGIES, AND GALAXIES

- 5.1 Debugging and Troubleshooting
- 5.2 Conditionals and Control Flow
- 5.3 Templating, Control Flow, and Iteration in Jinja2
- 5.4 YAML Basics
- 5.5 Ansible Blocks
- 5.6 Performance and Execution Strategies
- 5.7 Ansible Galaxy
- 5.8 Security

Lesson 6: ANSIBLE IN THE CLOUD

- 6.1 Ansible in the Cloud
- 6.2 Ansible AWS Demo
- 6.3 Ansible Tower





AIS

With the rising demand in scalable technology, AIS provides tailored goal-setting based on your organization's needs and expectations. With products geared towards the growing needs of your organization's customers and employees, AIS has innovative and value-driven solutions.

Learning Partners



SAS Management, Inc.

SAS Management, Inc. has been a leader in the training, certification and consulting services industry in the Philippines. With offices in Makati, Ortigas and Cebu, Philippines, the company has been the top training and consulting company for over 9 years. In its years of existence, it has provided certificates to over 100,000 professionals including 10,000 participants in the 160+ courses that have been conducted just during the 2020-2021 pandemic alone. The most sought-after courses being offered are ITIL, Project Management Professional (PMP)®, COBIT 5, Six Sigma Yellow Belt, Six Sigma Green Belt, PRINCE2, and organizational skills, among others.



Simplilearn

Simplilearn, based in California and India, is the world's #1 online bootcamp and one of the world's the leading certification and training providers. Simplilearn trained over 2,000,000 professionals with 2,000+ trainers and provides over 400 different courses.

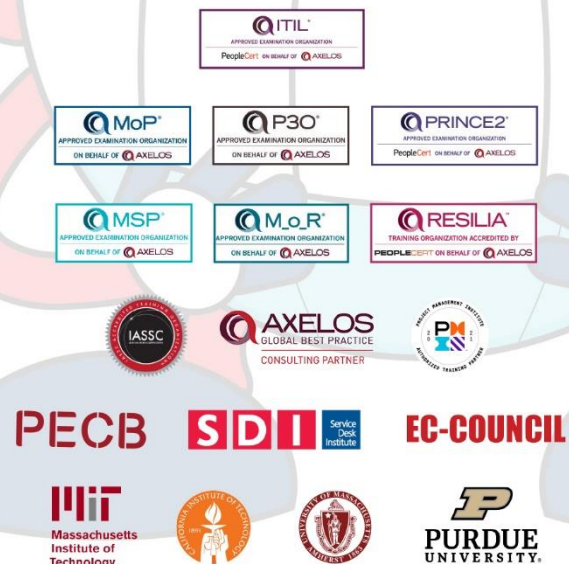
Technology Partner

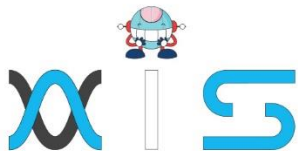


Freshworks

With over 40,000 customers, Freshworks is a business solutions software provider with products ranging from IT helpdesk and service desk, customer relationship management, live chat, marketing automation, phone system, and HR.

Partners & Affiliates





The program presented, as well as a wide range of programs are products of the partnership of AIS, SAS Management, Inc., and Simplilearn. With a common goal of providing the best practice of facilitating learning with an array of choices available in the online platform in this time of digitization.

Office Addresses

NXT AIS Inc.

Juan Antonio III Building
315 Maysilo Circle, Mandaluyong, Philippines

SAS Management, Inc.

- **Head Office**

Unit 1602 Cityland 10 Tower
2 6815 HV dela Costa cor Ayala Avenue
Makati City, Philippines

- **Branch Office**

Unit 204 Villa Building
Jupiter St. corner Makati Avenue
Makati City, Philippines

- **Branch Office**

Room 201 2nd floor OLS Building
443 Gorordo Avenue., Brgy. Kamputhaw
Cebu City, Philippines

- **Branch Office**

Malaysia - SAS Management
Sdn Bhd 6f-16, IOI Business Park,
Persiaran Puchong Jaya
47170, Selangor

Simplilearn

- **Simplilearn Americas, Inc
Pvt Ltd.**

201 Spear Street, Suite 1100,
San Francisco, CA 94105 United States

- **Simplilearn Solutions
Pte Ltd.**

NALANDA 53/1 C, Manoj Arcade, 24th Main Rd,
Sector 2, HSR Layout, Bengaluru
560102, Karnataka, India.

- **Simplilearn Singapore**

#14-302, The Plaza, 7500A Beach Rd,
Singapore 199591